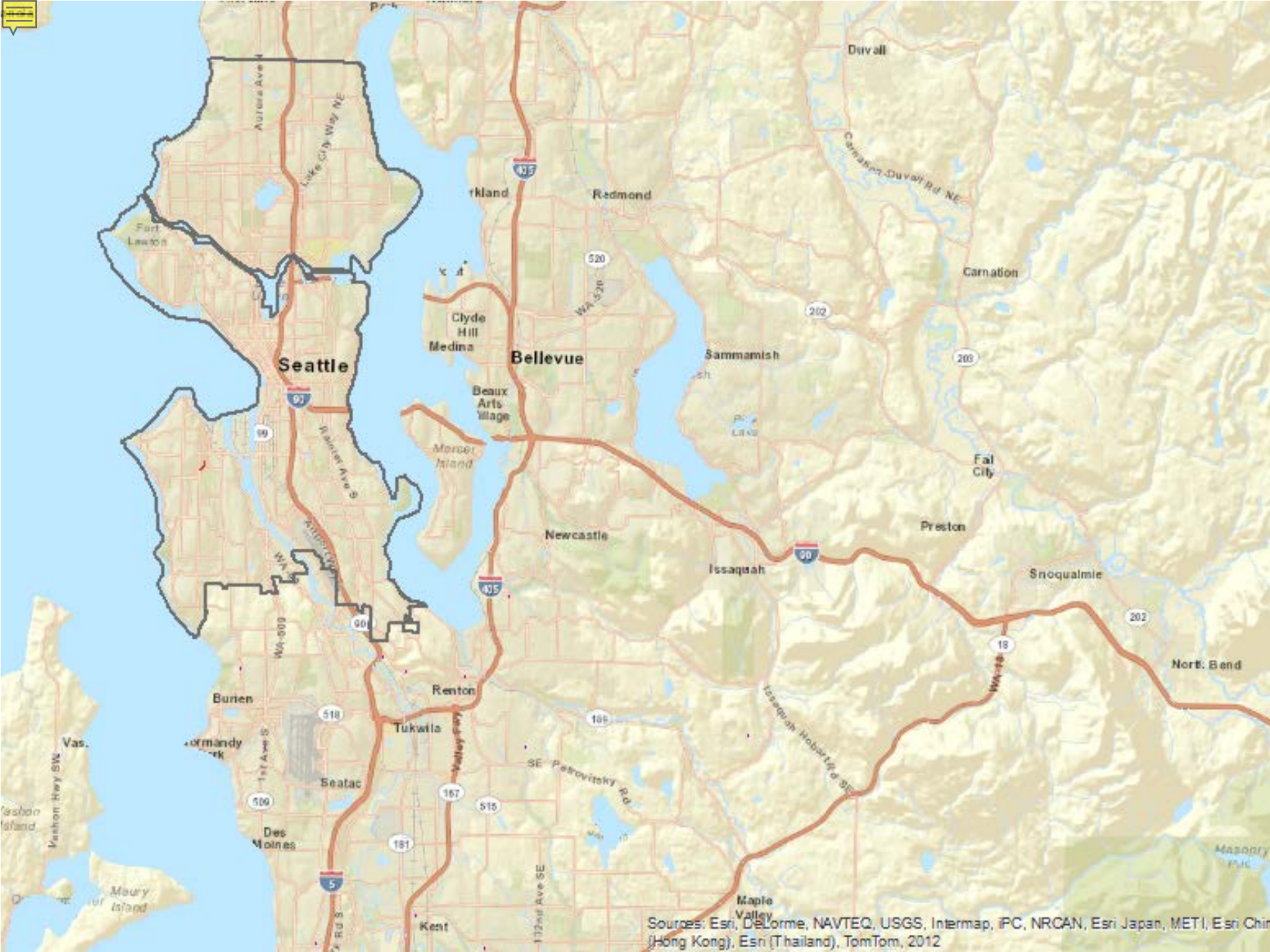


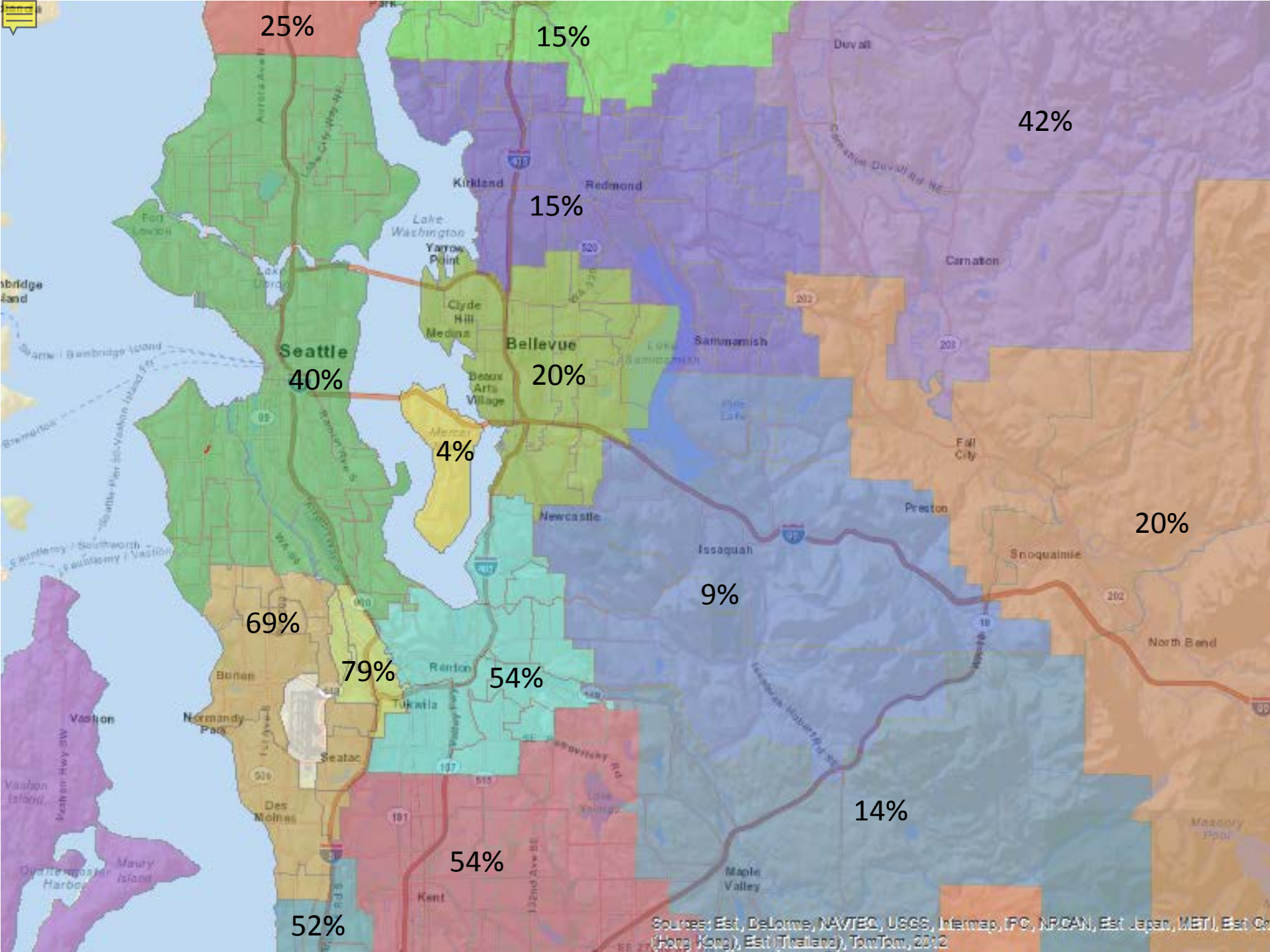


Expanding Access:
A Provider's Approach

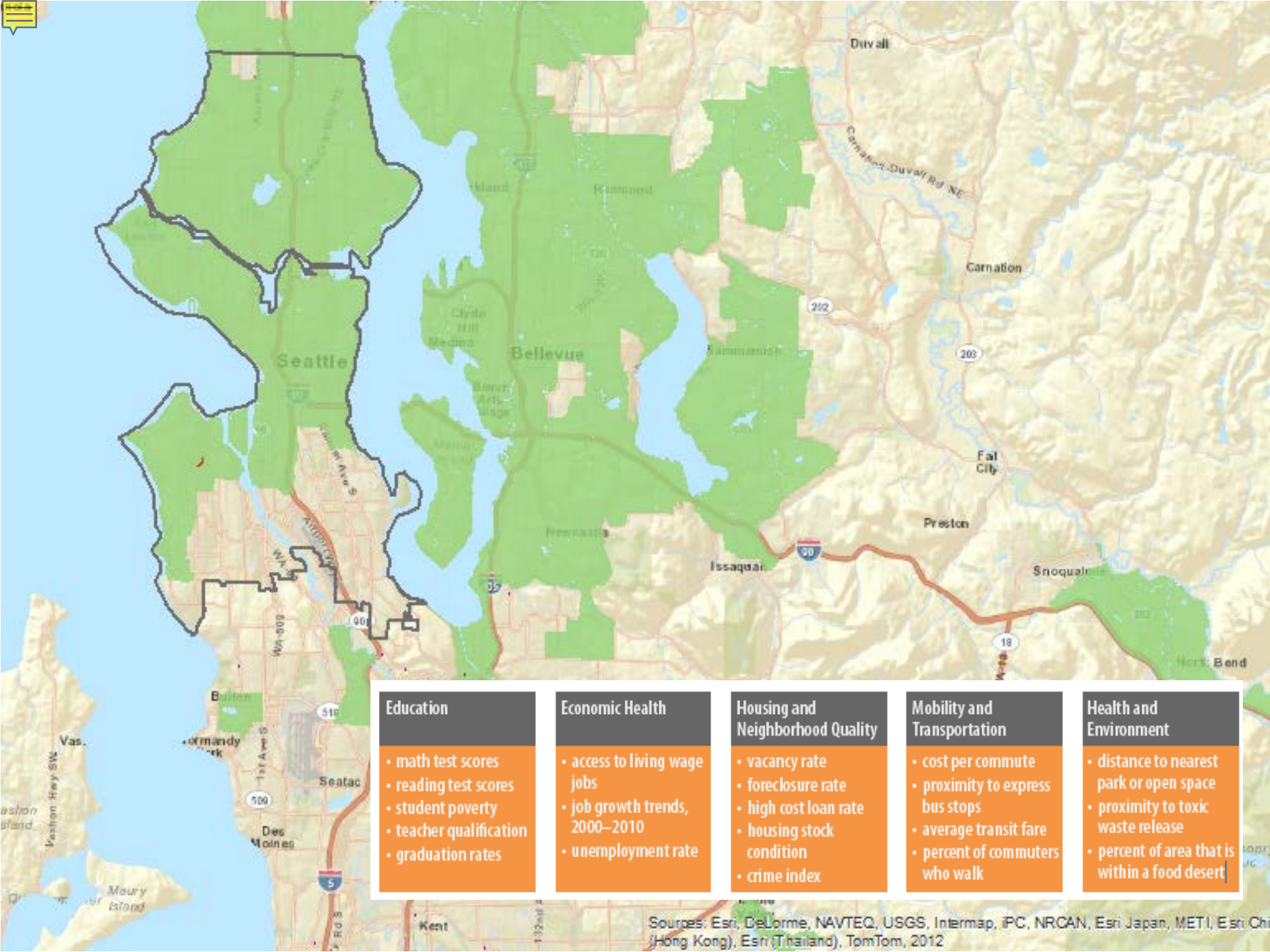
September 1, 2015



Sources: Esri, DeLorme, NAVTEQ, USGS, Intermap, iPC, NRCAN, Esri Japan, METI, Esri China (Hong Kong), Esri (Thailand), TomTom, 2012



Sources: Est. DeLorme, NAVTEQ, USGS, Intermap, (FC, NRCAN), Est. Japan, METI, Est. Co. (Hong Kong), Est. (Thailand), TomTom, 2012



Education

- math test scores
- reading test scores
- student poverty
- teacher qualification
- graduation rates

Economic Health

- access to living wage jobs
- job growth trends, 2000–2010
- unemployment rate

Housing and Neighborhood Quality

- vacancy rate
- foreclosure rate
- high cost loan rate
- housing stock condition
- crime index

Mobility and Transportation

- cost per commute
- proximity to express bus stops
- average transit fare
- percent of commuters who walk

Health and Environment

- distance to nearest park or open space
- proximity to toxic waste release
- percent of area that is within a food desert

Sources: Esri, DeLorme, NAVTEQ, USGS, Intermap, iPC, NRCAN, Esri Japan, METI, Esri China (Hong Kong), Esri (Thailand), TomTom, 2012



KCHA Resident Distribution by Opportunity Index

- 14,000 federally subsidized units
- Of our almost 7,000 households with children:

Opportunity Level:	Low/Moderate	High/Very High
Tenant-based Units	79%	21%
Place-based Units	70%	30%
Total Units	76%	24%



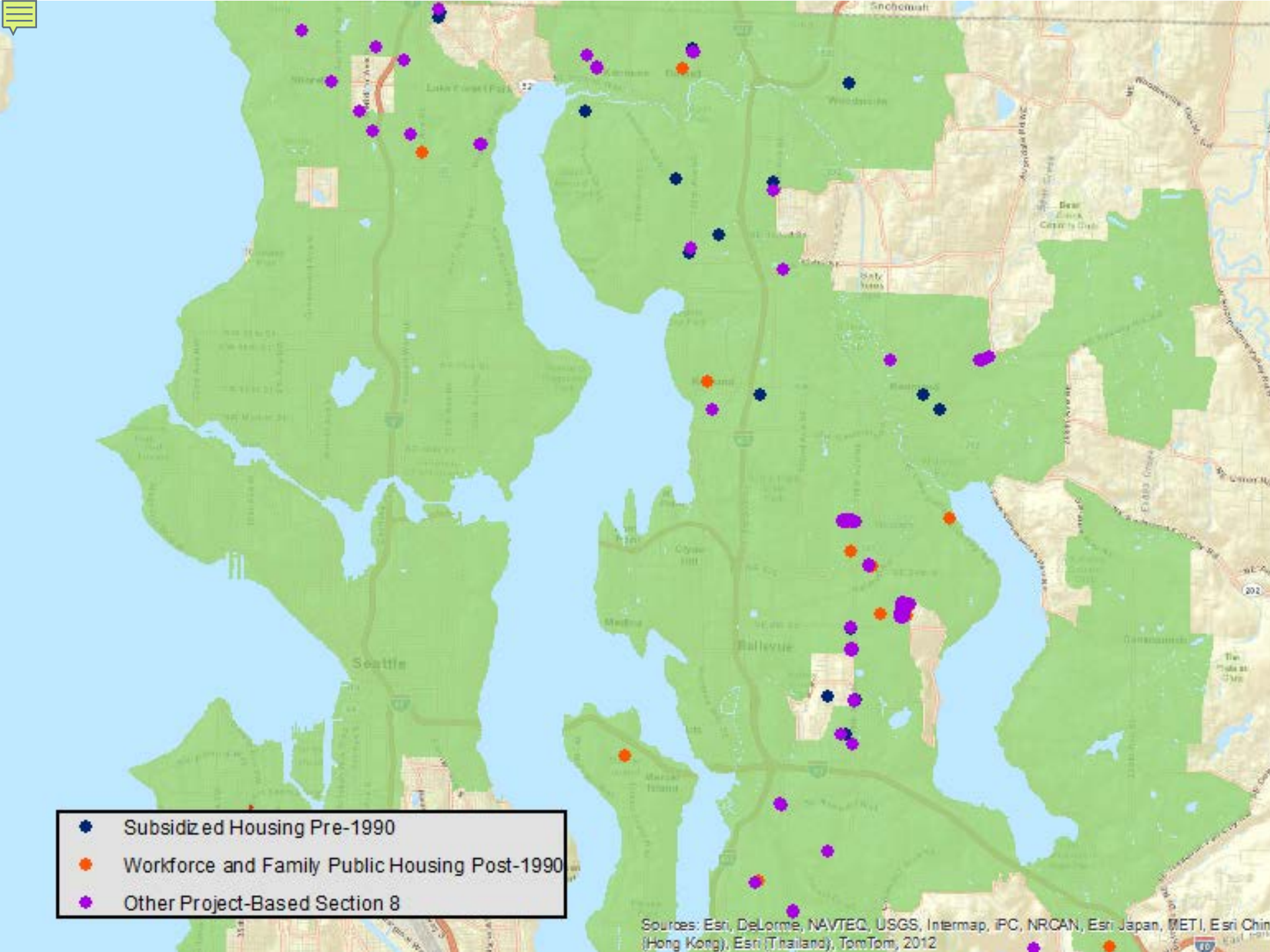
Expanding Opportunity

- Board resolution
- Place-based education initiatives
- Mobility counseling
- Source of income discrimination
- Small-market payment standards
- Aggressive use of place-based subsidies
- Acquisition/development of workforce housing
 - In KCHA workforce housing
 - New public housing
 - With region's LIHTC development pipeline



- Subsidized Housing Pre-1990
- Workforce and Family Public Housing Post-1990
- Other Project-Based Section 8

Sources: Esri, DeLorme, NAVTEC, USGS, Intermap, IPC, NRCAN, Esri Japan, METI, Esri China (Hong Kong), Esri (Thailand), TomTom, 2012





Expanding Opportunity

- Board resolution
- Place-based education initiatives
- Mobility counseling
- Source of income discrimination
- Small-market payment standards
- Aggressive use of place-based subsidies
- **Acquisition/development of workforce housing**
 - KCHA workforce housing
 - New public housing
 - With region's LIHTC development pipeline



Gilman Square

Island Crest





August Wilson Place

Photo compliments of Steve Rowland

