



# Seattle's Choice Neighborhood: Placing School Improvement and Student Performance at the Center of Neighborhood Revitalization



**September 24, 2014**  
**1:00 – 2:00 PM EST**



# Webinar Tips

---

In your attendee control panel, be sure to choose the audio mode you intend to use (telephone or VoIP).

If you find you are having a sound quality issue, hang up and dial back in. Sometimes these problems clear themselves up when the bad connection is terminated.

If you can't hear other callers:

**Telephone users:** Hang up and dial back in.

**VoIP users:** Test your speakers setup. Click Audio Setup in the Audio Pane to select the correct device.

**Mac users:** Click the speaker icon in the Audio Pane to select the correct device.

Check the volume setting in audio setup. Click **Speakers Setup** and then click **Play Sound**. Adjust the slider bar to the desired volume.



# Webinar FAQs

---

## What if I have a question?

There will be designated time at the end of the presentation for questions. Feel free to submit questions through the GoToWebinar questions and chat box at any time and they will be given to the moderator to pose to the speaker at the end of the presentation.

## Is the webinar being recorded?

The webinar is being recorded and will be available for download after the presentation.

## Have feedback?

You will receive an email with a survey after this webinar is complete. We hope that you take the time to complete this survey as it will help CSSP improve future webinars.



# Purpose

---

This webinar will explore the following questions:

- How can education improvements be a central part of neighborhood revitalization?
- What roles do educational partnerships, including partnerships with anchor institutions, play in improving outcomes for students in a housing development, neighborhood school, or entire neighborhood?
- What tools are needed to ensure effective coordination and implementation of educational services?

The Promising Practice Guide on Seattle's Education Partnerships can be found online at:

[www.hud.gov/choiceta](http://www.hud.gov/choiceta)

# Poll: Are you from a community engaged in...

---

- A. Choice Neighborhoods
- B. Promise Neighborhoods or a neighborhood using a Cradle-to-Career approach
- C. Community Schools neighborhood
- D. Federal Partner
- E. Other (For example: Casey Foundation Family-Centered Community Change neighborhoods, Building Neighborhood Capacity Program, Byrne Criminal Justice Innovation, Promise Zones...)

# Presenters

---

- **Jessica Rosenberg**, Choice Neighborhoods, U.S. Department of Housing and Urban Development
- **John Forsyth**, Community Services Administrator, Seattle Housing Authority
- **Kent Koth**, Director, Center for Service and Community Engagement & Seattle University Youth Initiative, Seattle University



# Neighborhood Focus

---

- Choice Neighborhoods goes beyond revitalizing public or HUD-assisted housing
- Grantees develop comprehensive neighborhood plans that address broader neighborhood goals:
  - *Public safety*
  - *Education*
  - *Employment*
  - *Economic development*



# Education Partnerships in Choice Neighborhoods

---

- Choice Neighborhoods recognizes that improving schools and residents' access to high-quality education programs is a driver of neighborhood revitalization
- “Cradle-to-College” or “Cradle-to-Career” pipeline embedded in Choice Neighborhoods vision and goals
- Education partnerships are key in improving student performance and schools





# What is your neighborhood's biggest challenge?

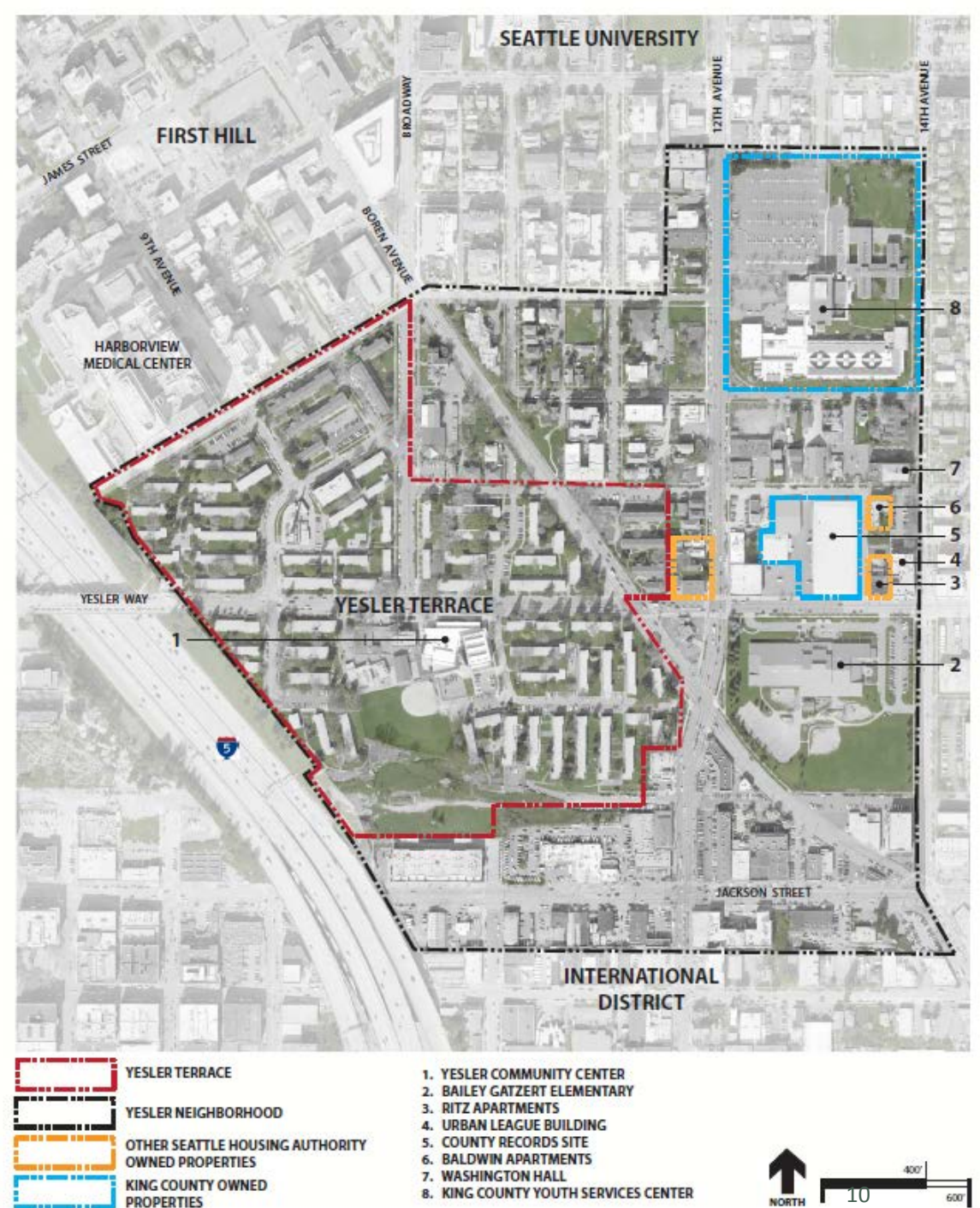
---

**What is one of the biggest challenges to creating educational improvements in your neighborhood?**

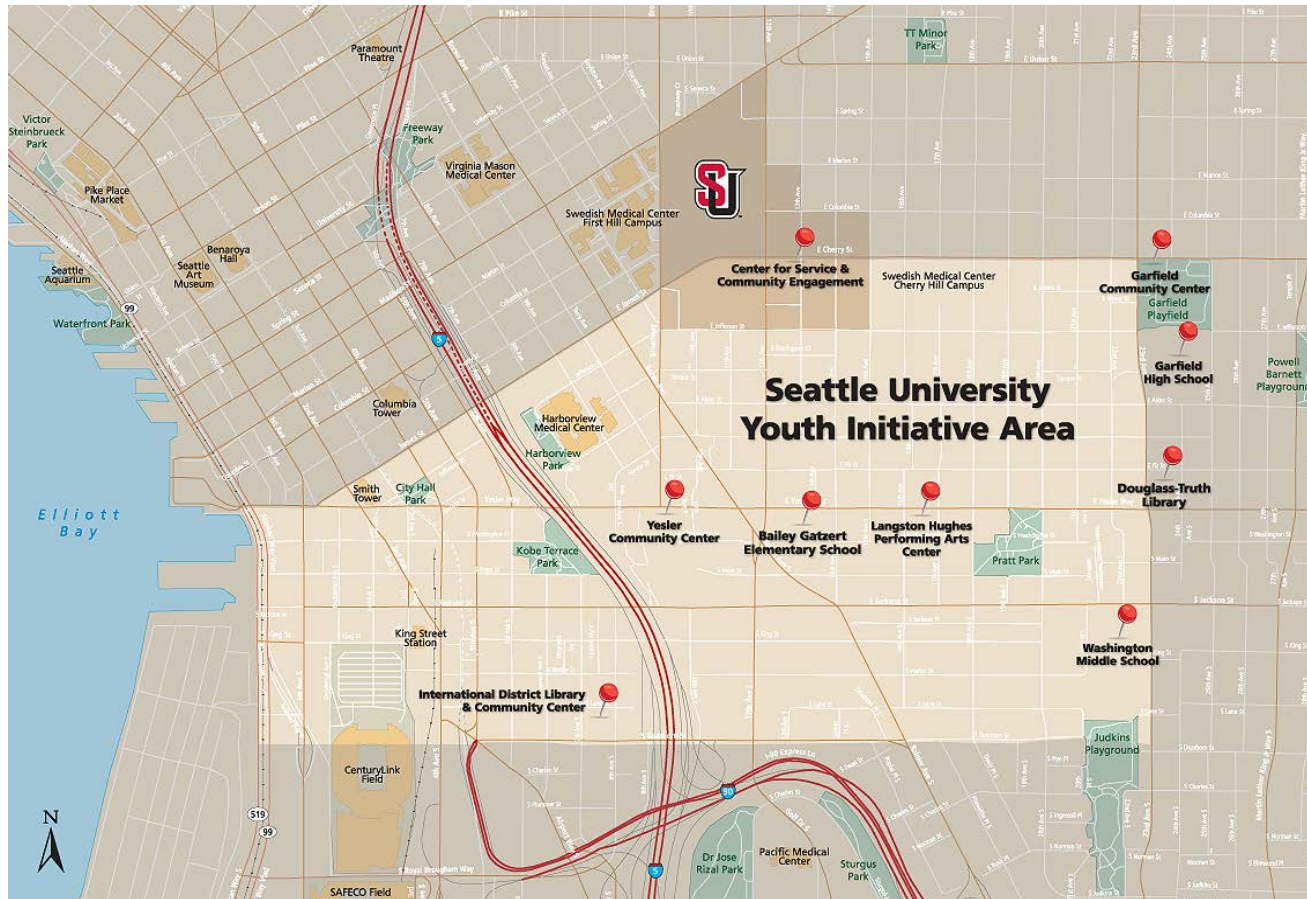
*Type your response in the questions box in the GoToWebinar menu bar on the side of your screen.*

# Seattle's Choice Neighborhood: Yesler Terrace and Surrounding Areas

- 70-year old public housing development east of downtown Seattle
- Transformation of 561 to 5,000 units
- Residents primarily from East Africa and Southeast Asia
- 400 school-age children, many with low passing rates on standardized math and reading



# Seattle University: Anchor Institution



- Built and strengthened an existing partnership
- Set the foundation for bringing on other partners



# Capitalizing on Existing Partnerships

---

- Of the \$30 million Choice Neighborhoods grant, just over \$1.9 million has been dedicated to educational improvements
- This funding has been leveraged to generate over \$7.8 million from other partners
- Educational partners include:
  - Seattle Public Schools
  - Catholic Community Services
  - Neighborhood House
  - The College Success Foundation
  - YMCA
  - Seattle Parks and Recreation



# Neighborhood Elementary School

---

- Bailey Gatzert Elementary School is located across the street from Yesler Terrace
- Approximately one third of the school's 400 students live in Yesler Terrace
- One of the highest poverty schools in Seattle
- Historically low performing, with 40% of 3<sup>rd</sup> to 5<sup>th</sup> graders proficient in reading and 36% reaching proficiency in math
- Moved from open enrollment to a neighborhood-based attendance plan – students will become more and more comprised of those living within 2 miles of the school



# Cradle-to-College Approach

---

- Preparing Children for School
- K-12 Success
- Planning for Postsecondary Success



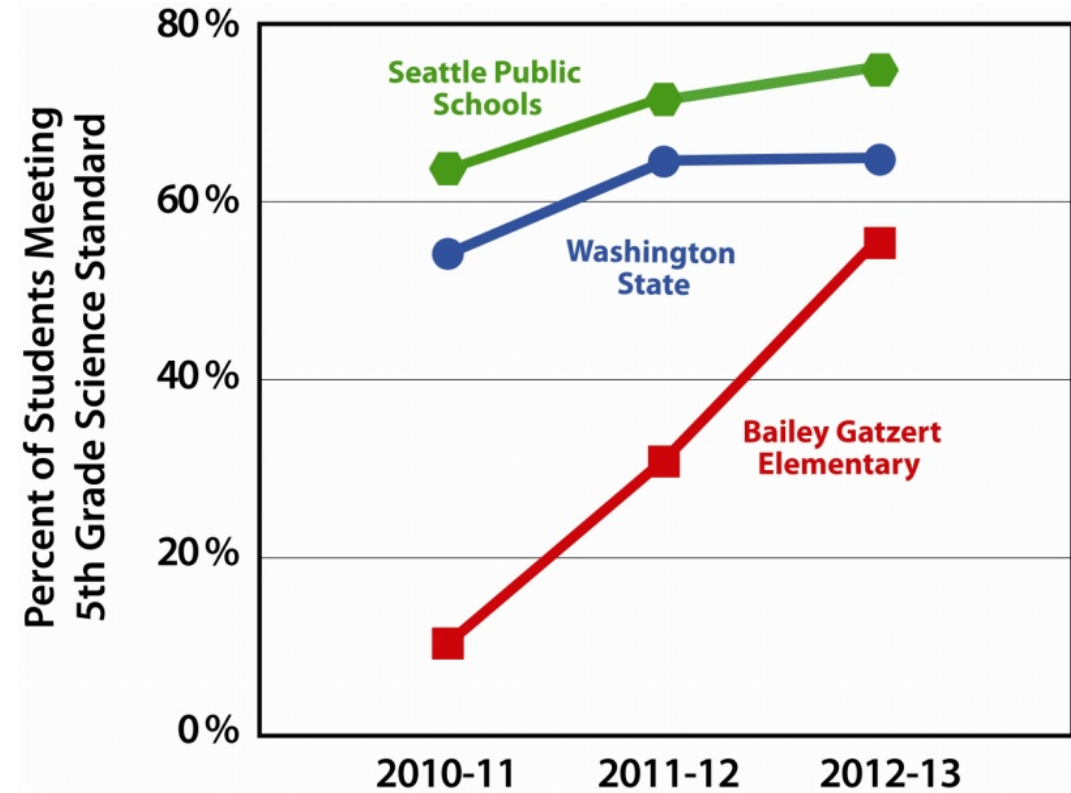
# Data Sharing

---

- Access to data about each student served through the pipeline is essential
- Seattle school district's School and Community Partnerships Department led an effort to revamp the district's data request response
- Staff person funded by Bill and Melinda Gates Foundation for one-year to build the capacity of local schools to work with partners and create systems where schools and partners could work together
- Data sharing agreements facilitated the exchange of data and information between partners and the school

# Emerging Results

- Positive outcomes for proficiency in reading, proficiency in math, and fewer than 10 days of school missed
- 1,400 Seattle University students served in the community; 52% increase in students who made a year-long commitment
- The university has created a \$1 million endowed scholarship fund for neighborhood youth to attend Seattle University in the future





# Yesler Community Center





# Education Partnership Lessons

---

- Identify a lead partner or anchor institution with educational expertise
- Consider adopting a cradle-to-career approach
- Ensure effective coordination and implementation of educational services:
  - Create structured and regular communication among partners
  - Coordinate and provide support at the school site level
  - Develop data sharing agreements between partners and schools



# Questions and Discussion

---

To submit a question to our presenters, please type it in to the question box on the GoToWebinar menu bar on the side of your screen

# To Learn More:

**CHOICE NEIGHBORHOODS PROMISING PRACTICE GUIDES**

U.S. DEPARTMENT OF HOUSING AND URBAN DEVELOPMENT

ISSUE BRIEF #2

**Choice Neighborhoods: Placing School Improvements and Student Achievement at the Center of Neighborhood Revitalization**



Volunteers in front of the Vesler Community Center on Seattle University and Vesler Terrace's community clean-up day

**BACKGROUND**

Across the country, Choice Neighborhoods grantees are creating the conditions necessary for public and private reinvestment in neighborhoods with distressed public or HUD-assisted housing. This reinvestment is offering the assets that are important to families' choices about where to live, including safe streets, commercial activity and good quality schools.

HUD's Choice Neighborhoods program recognizes that access to quality schools is a strong driver in creating desirable neighborhoods. Improving school quality boosts the surrounding housing market and makes the neighborhood more appealing to new residents. Improving education opportunities for current residents is also a key factor in ensuring that the neighborhood remains a viable place for families to stay well in to the future. These opportunities include early learning programs and services so children enter kindergarten ready to learn and significant improvements in the quality of schools and after-school programs in the neighborhood that prepare students to graduate from high school college- and career-ready.

This guide highlights how the Seattle Housing Authority and the Seattle Choice Neighborhoods grant team prioritized educational improvements in the neighborhood and in a high-needs neighborhood school by collaborating with multiple partners, including a university, the school district and child-centered nonprofit organizations. Seattle's story serves as a promising example of how multiple partners can mobilize to both improve the range and quality of educational opportunities available to students in their community and use education improvements as a cornerstone of broader community revitalization.

- Choice Neighborhoods promising practice guides available online at: [www.hud.gov/choiceta](http://www.hud.gov/choiceta)
- View three videos on the importance of schools in neighborhood revitalization from the Choice Neighborhoods June 2014 conference
- Keep an eye out for new guides based on grantees' promising practices
- More information on cradle-to-career pipelines and Promise Neighborhoods: <http://promiseneighborhoodsinstitute.org/>
- Please complete the satisfaction survey