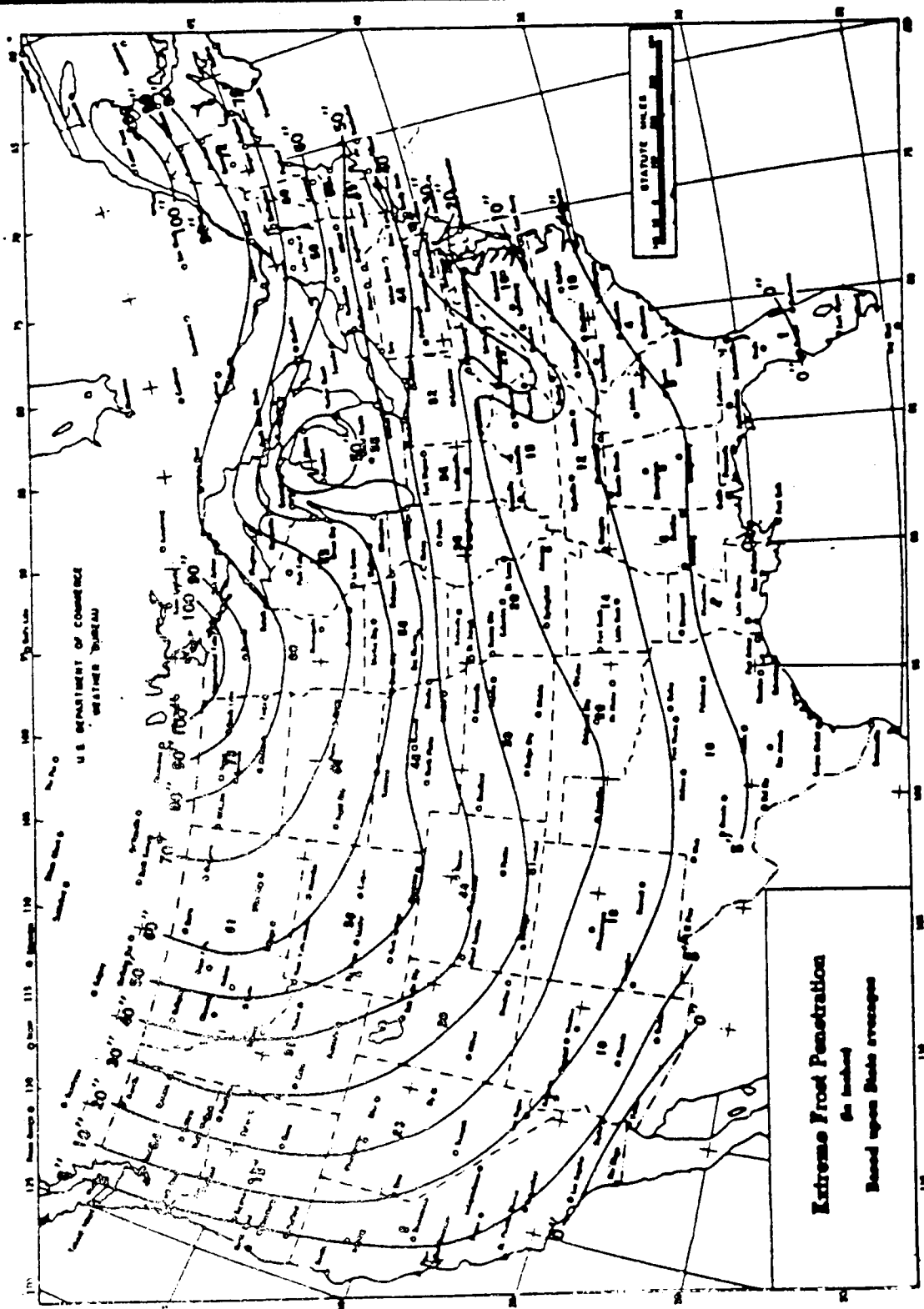


Map showing distribution of great floods in the conterminous United States since 1889

FLOOD-PRONE SITES

APPENDIX H



FROST PENETRATION DEPTH

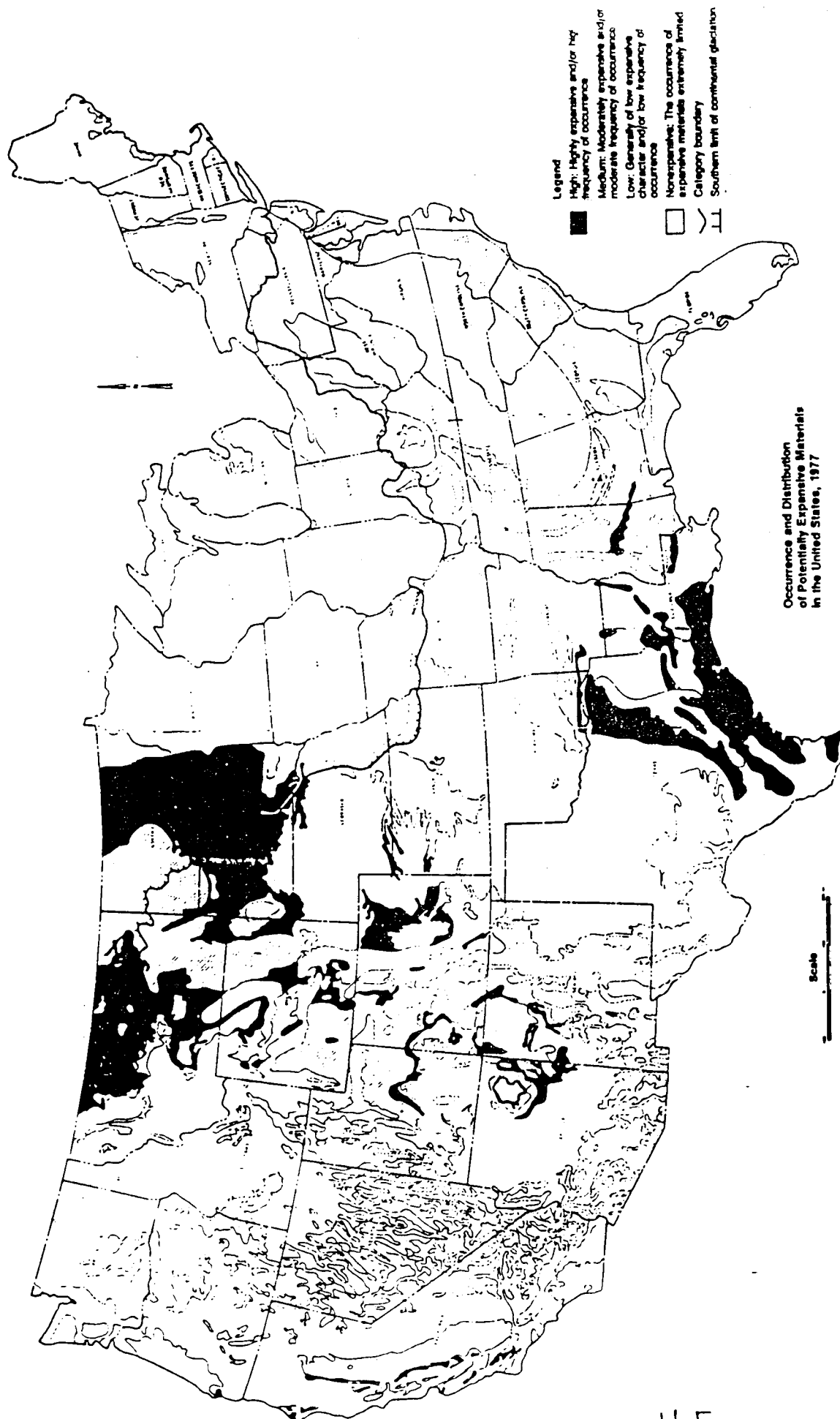


Fig. 10. Occurrence and distribution of potentially expansive materials in the United States, 1977 (U.S. Army Corps Engineer Waterways Experiment Station)

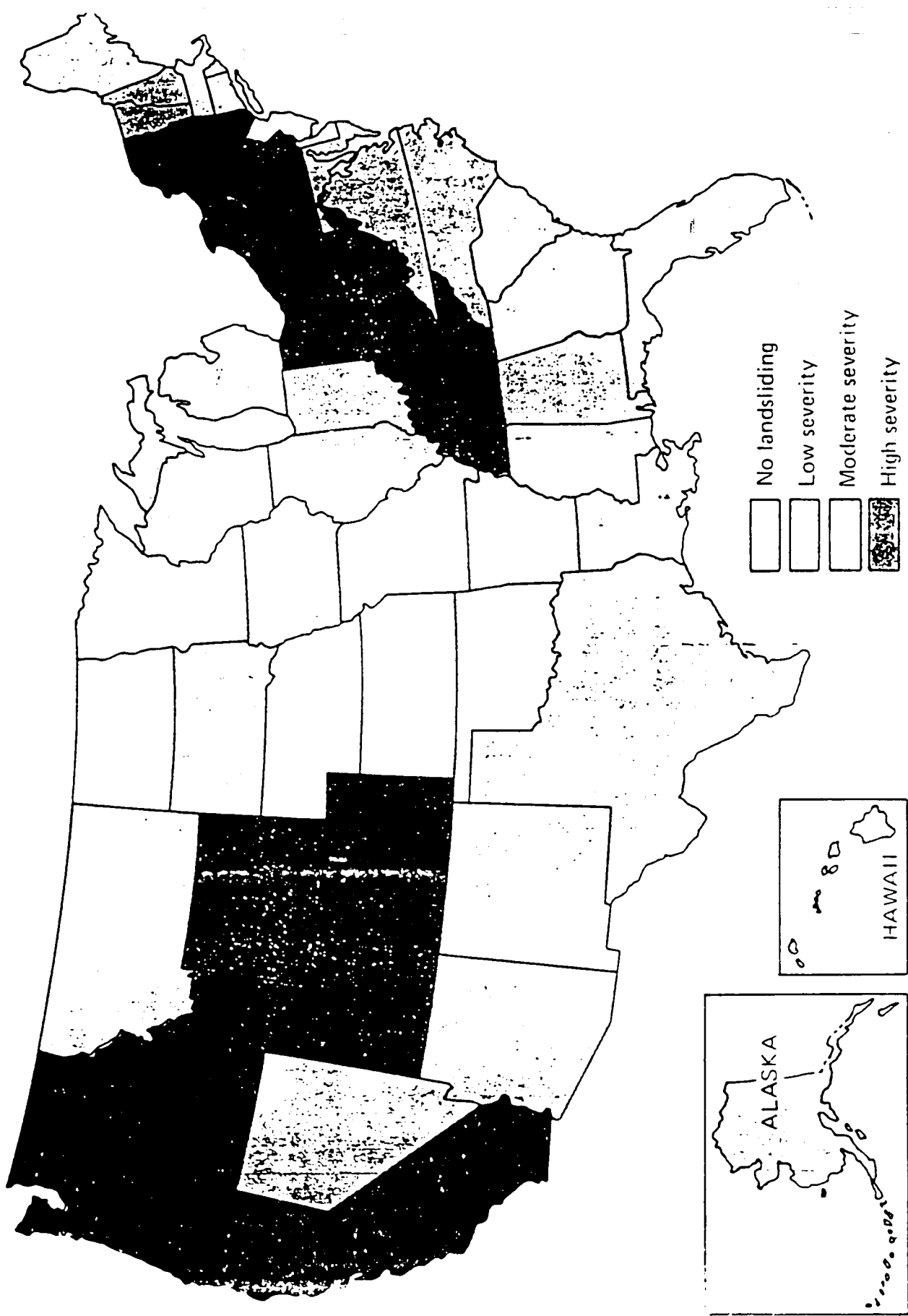
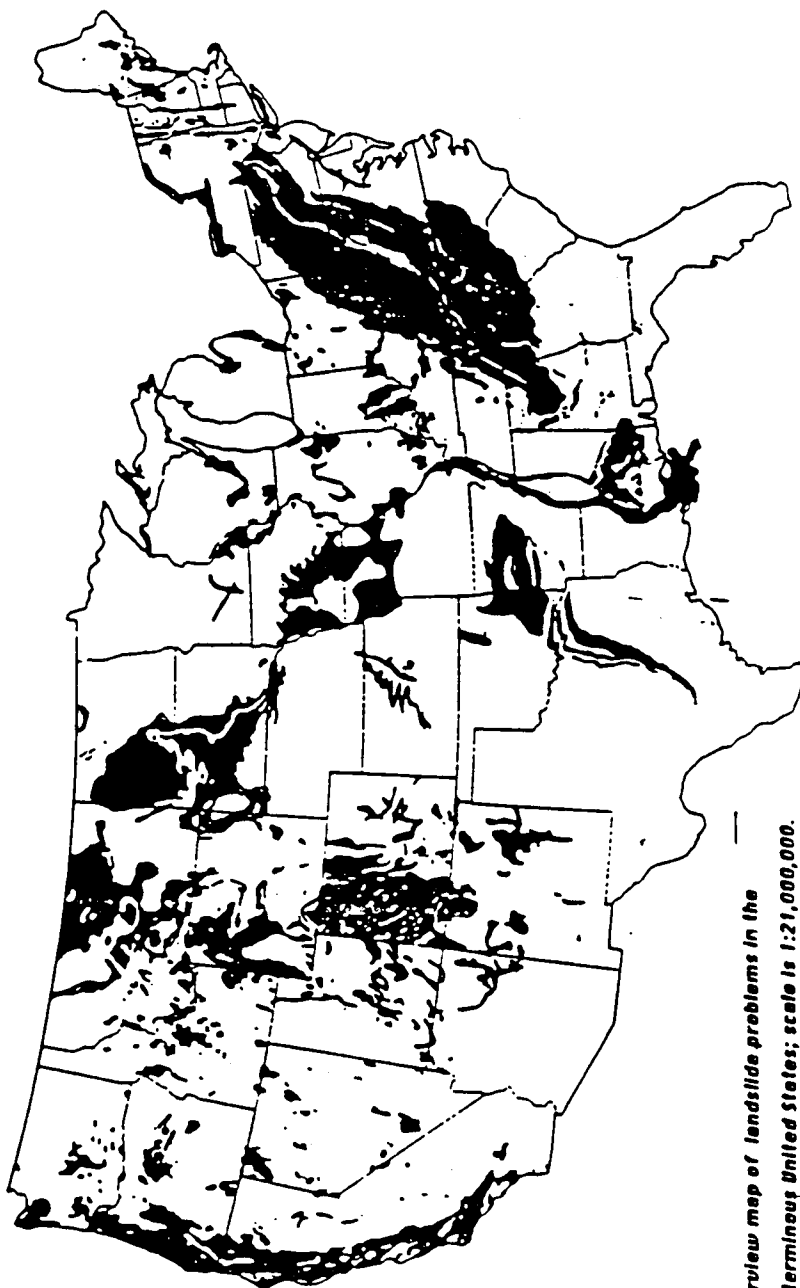


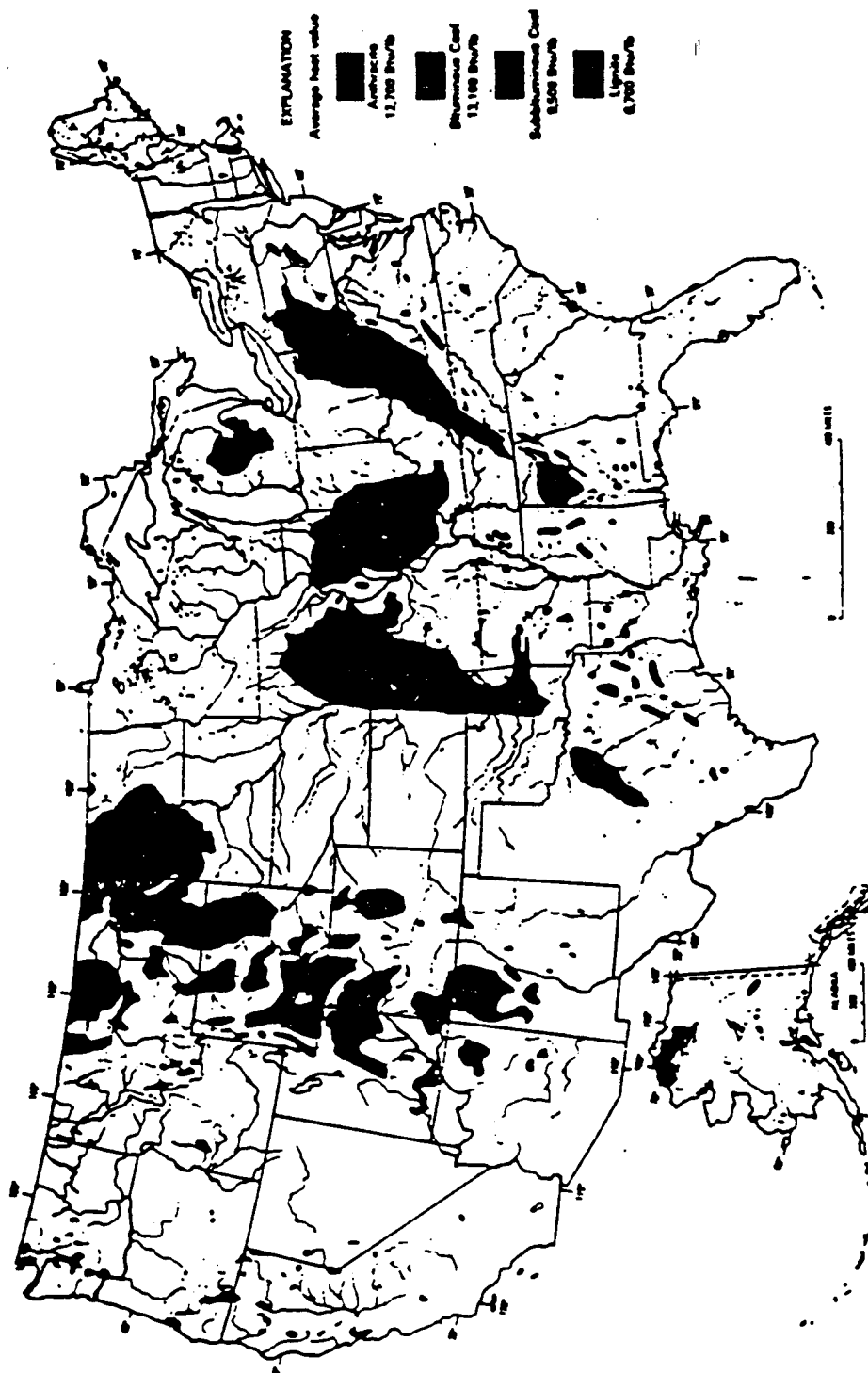
FIGURE 1 Qualitative indication of the severity of landsliding in the United States by state.



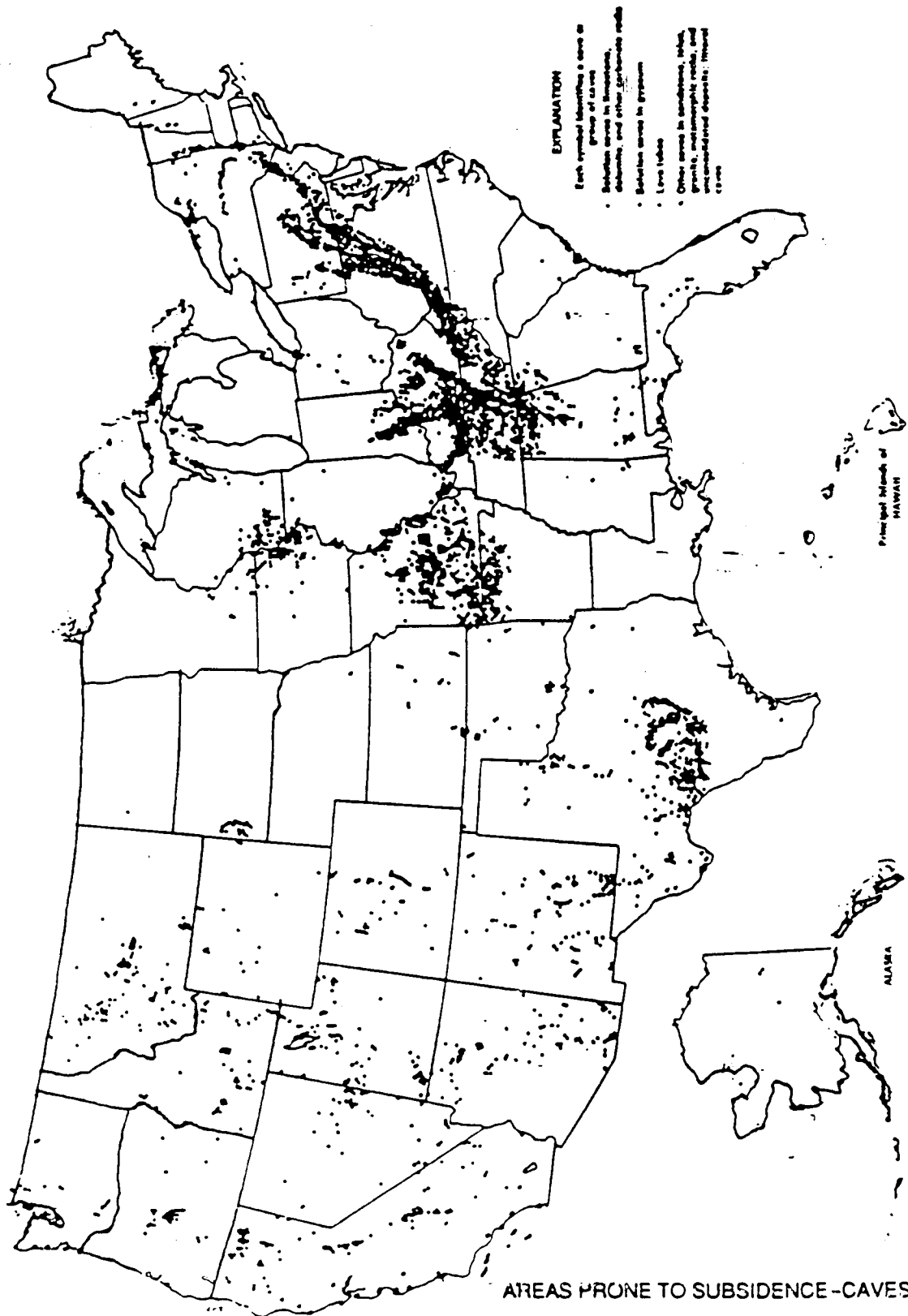
Overview map of landslide problems in the conterminous United States; scale is 1:21,000,000. The severity is highest in the lightly shaded areas, with severity lessening as the color darkens. (modified from Redbruch-Mall and others, 1976)

LANDSLIDE AREAS

APPENDIX H



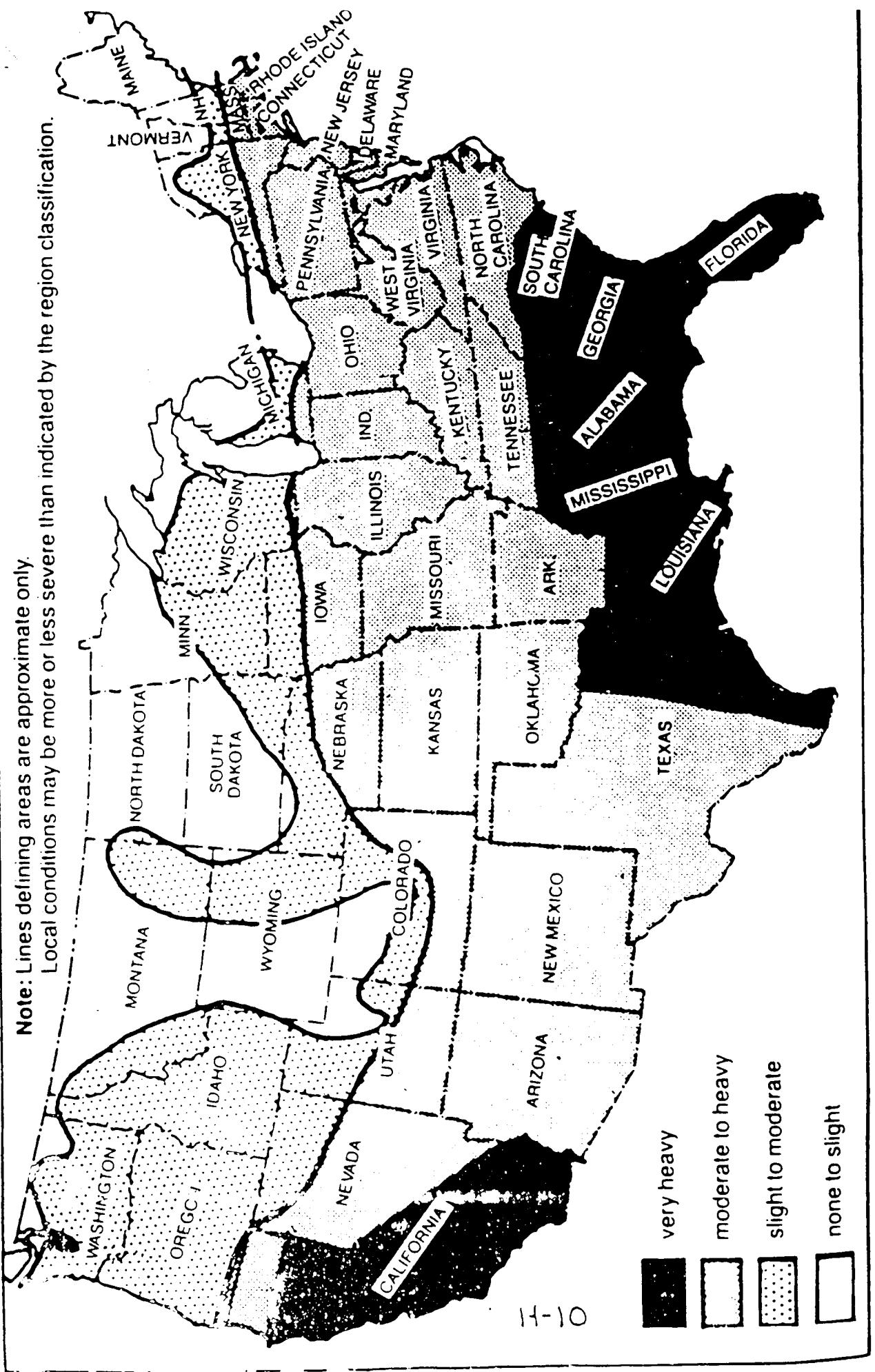
AREAS PRONE TO SUBSIDENCE-MINING

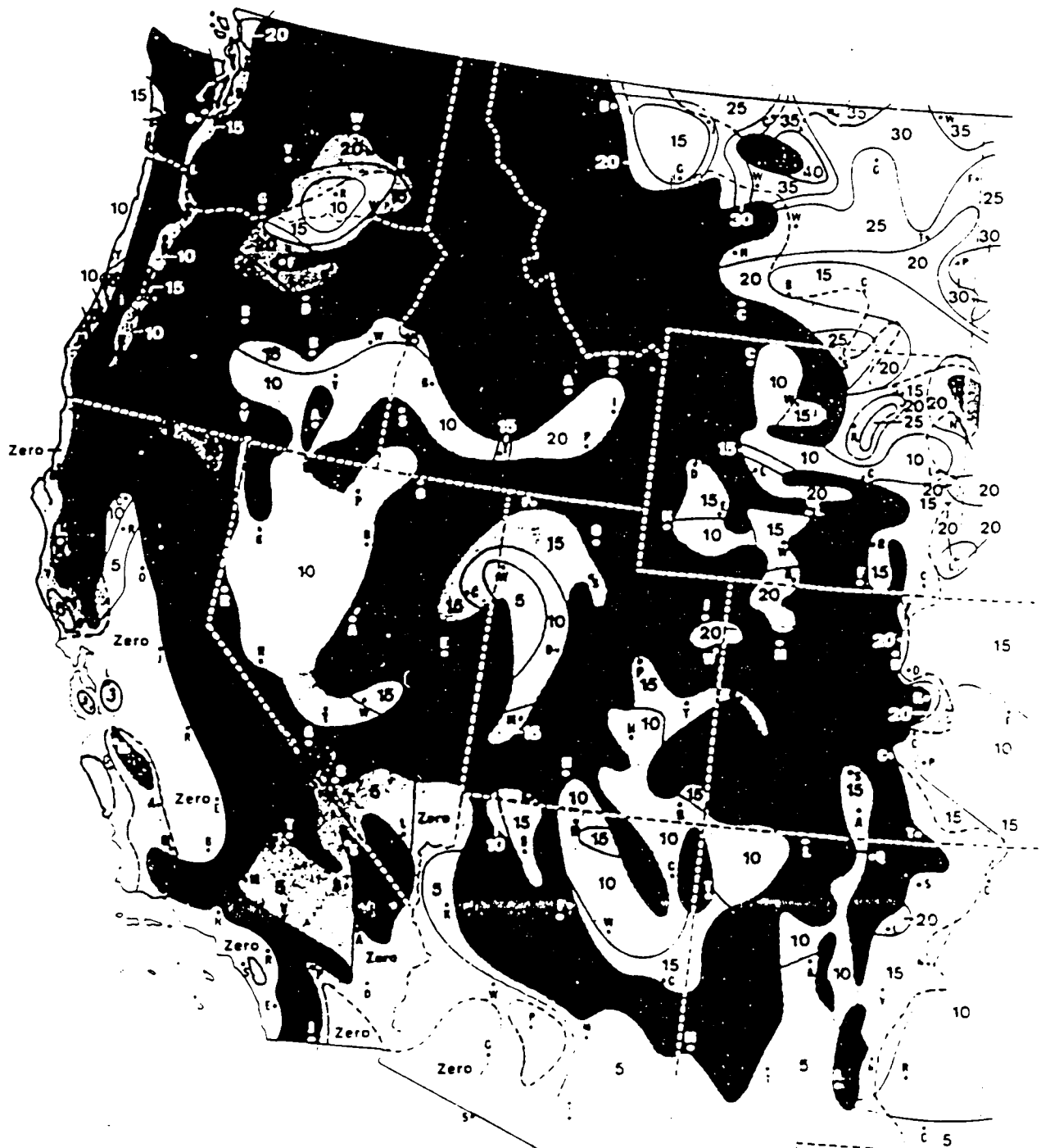


TERMITE INFESTATION PROBABILITY MAP


Note: Lines defining areas are approximate only.


Local conditions may be more or less severe than indicated by the region classification.



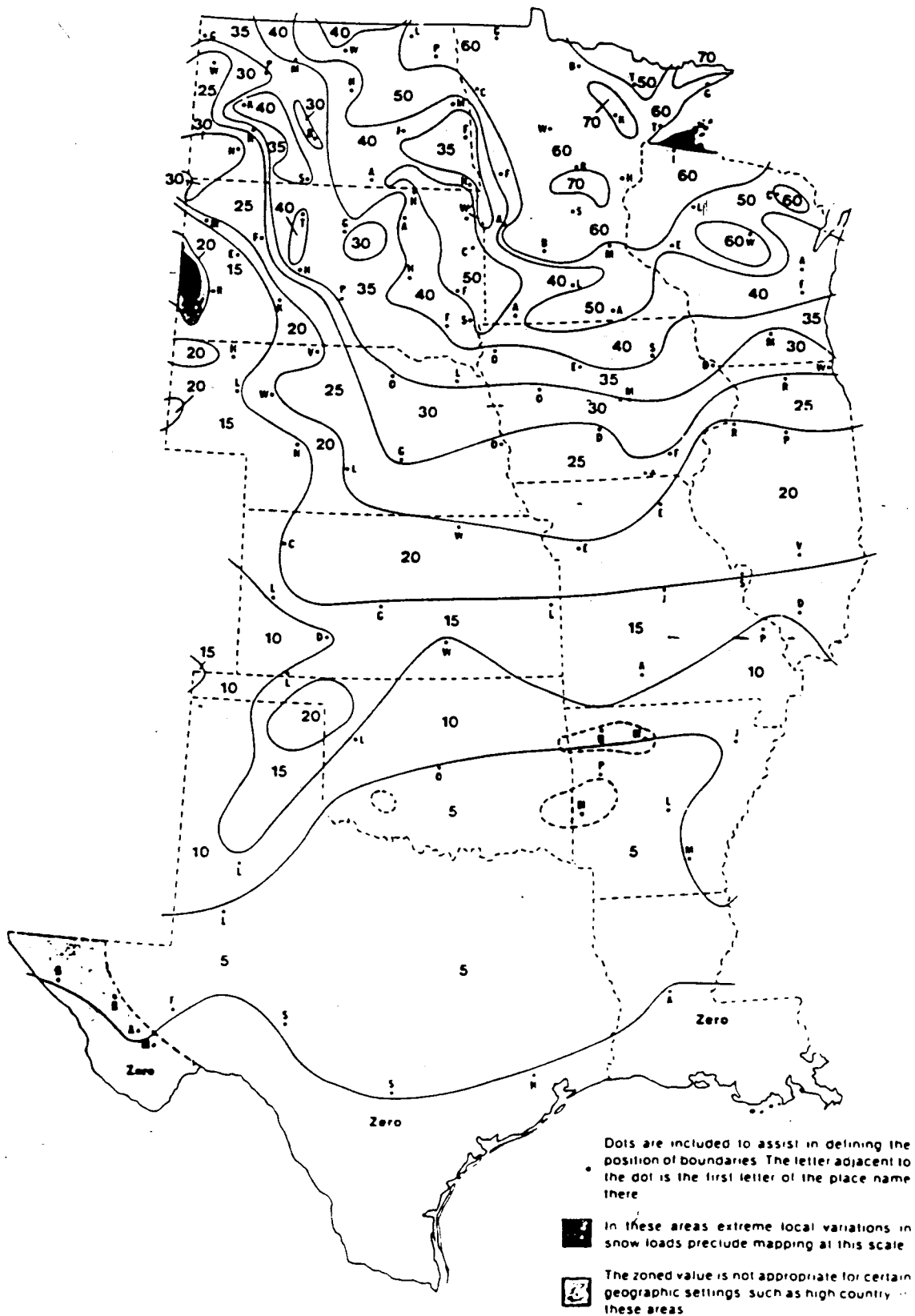


Dots are included to assist in defining the position of boundaries. The letter adjacent to the dot is the first letter of the place name there.

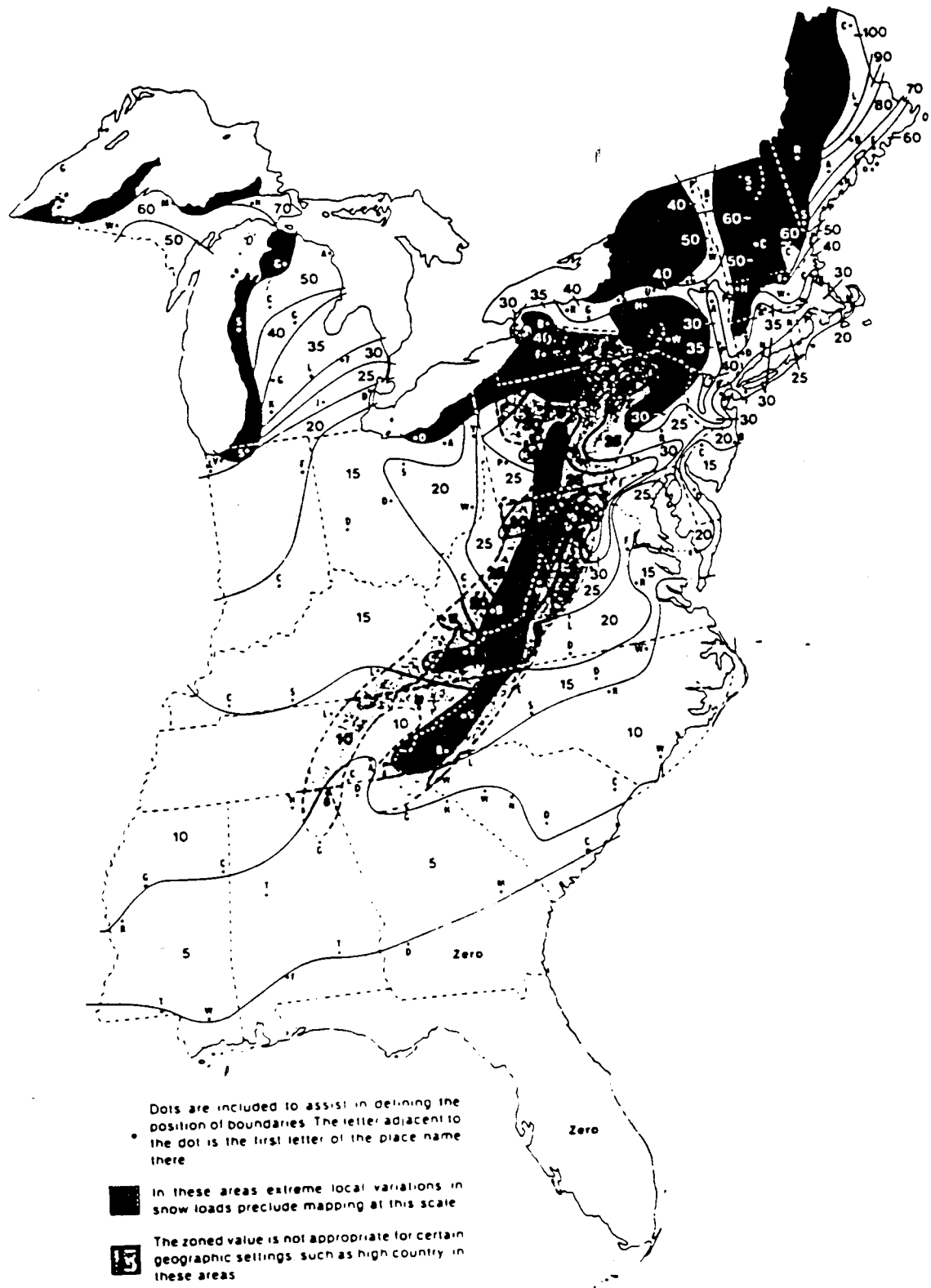
 In these areas, extreme local variations in snow loads preclude mapping at this scale.

 The zoned value is not appropriate for certain geographic settings, such as high country, in these areas.

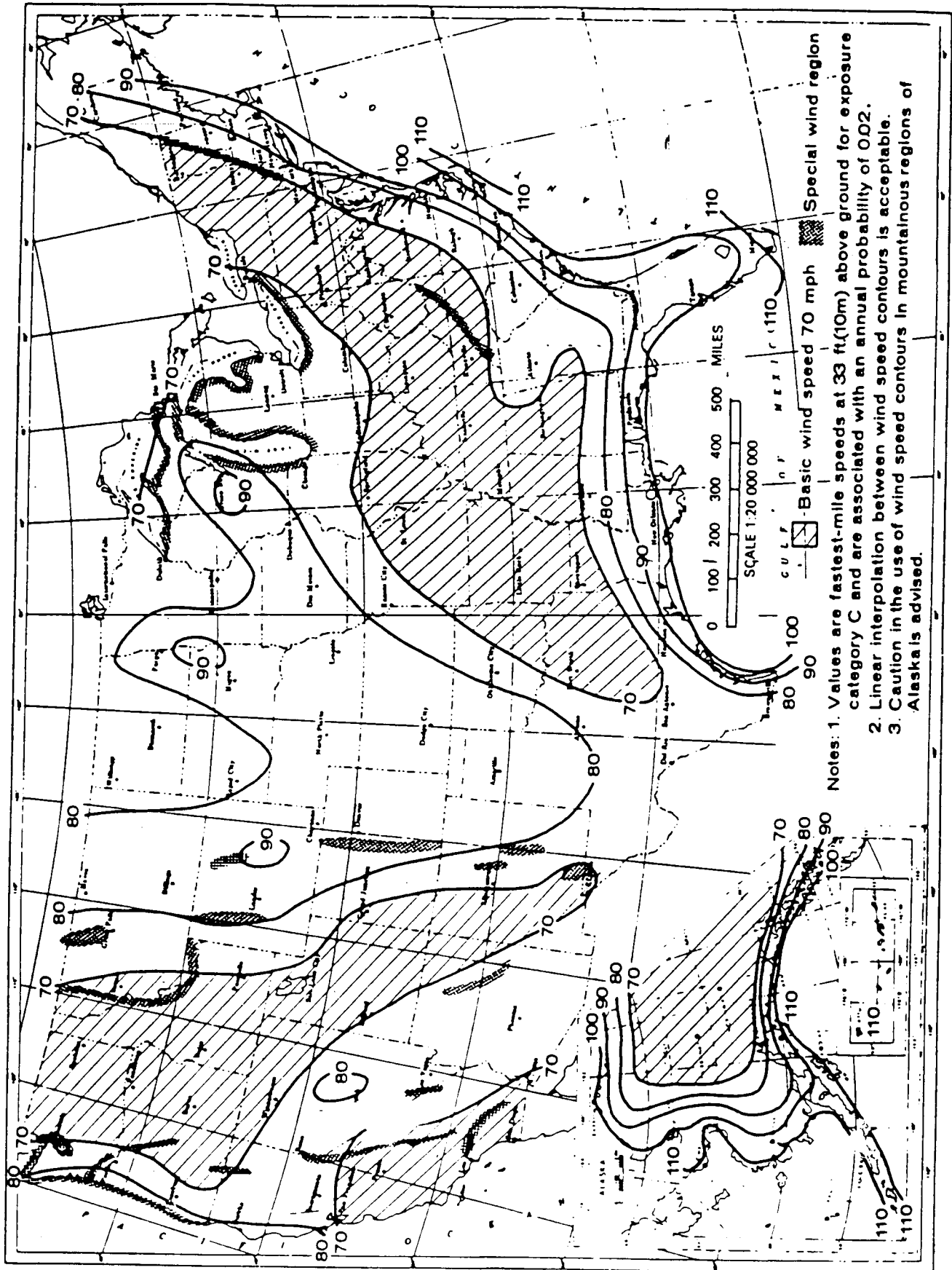
Ground Snow Loads, p_g , for the Western United States
(pounds per square foot)



Ground Snow Loads, p_g , for the Central United States
(pounds per square foot)

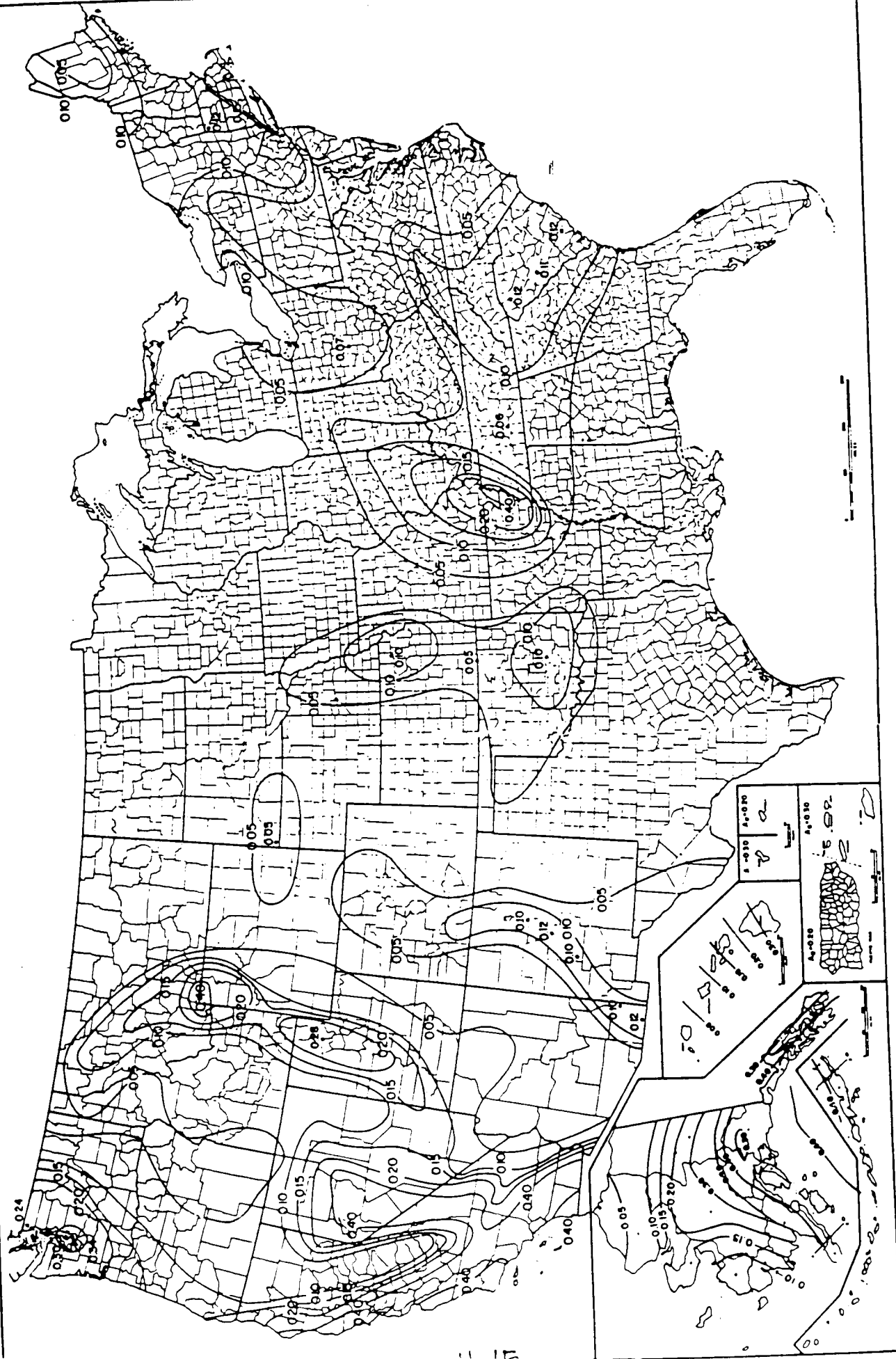


Ground Snow Loads, p_g , for the Eastern United States
(pounds per square foot)

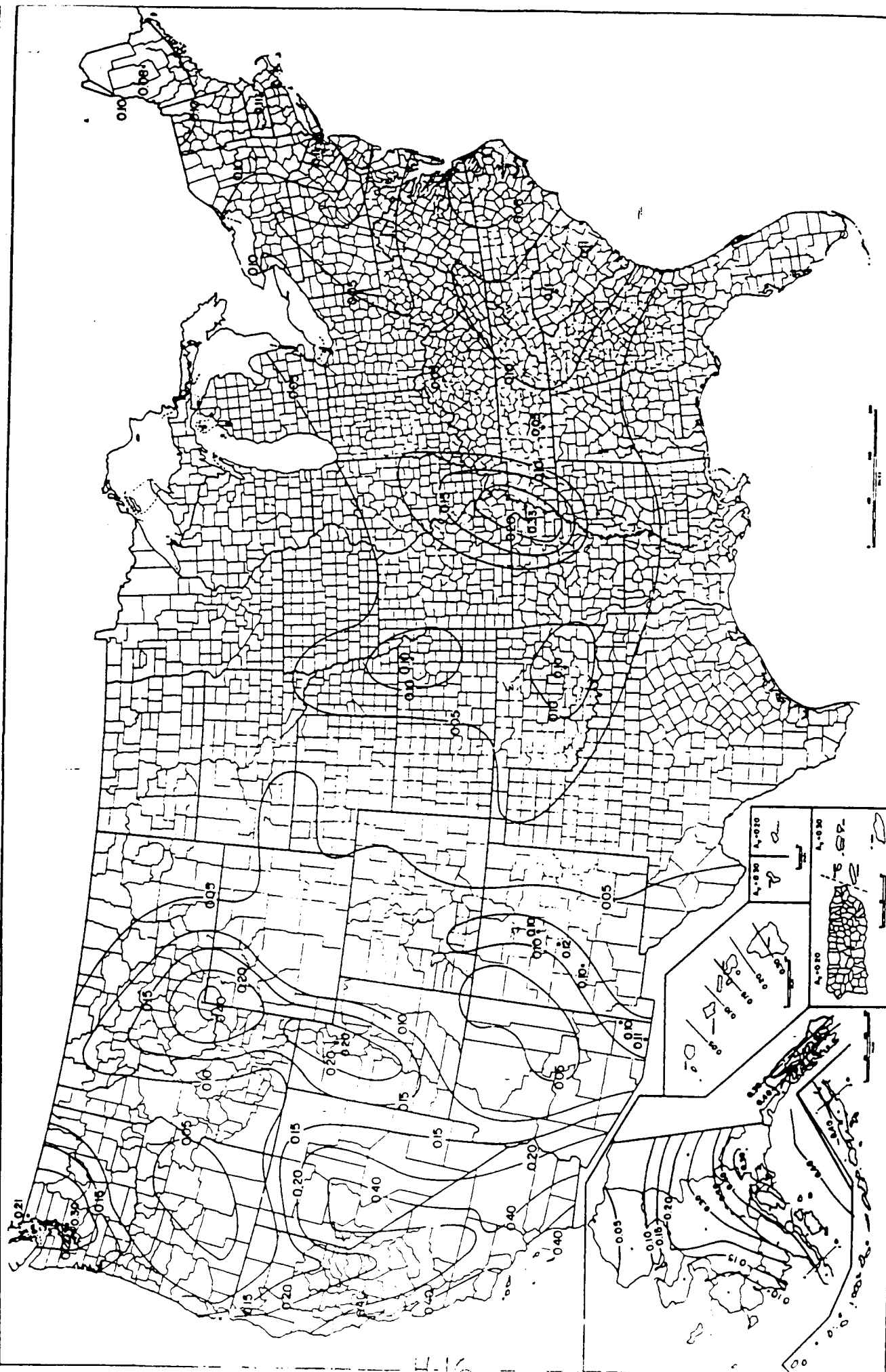


Basic Wind Speed (mph)

MINIMUM DESIGN LOADS



Contour Map for Coefficient A_s



Contour Map for Coefficient A.

Table H-1
Seismic Performance Category for
Seismic Hazard Exposure Group I

Effective Peak Velocity-Related Acceleration A_v	Seismic Performance Category
$A_v < 0.05$	A
$0.05 \leq A_v < 0.10$	B
$0.10 \leq A_v < 0.20$	C
$0.20 \leq A_v$	D

Manufactured Housing of Category A and B (one story detached one and two family dwellings which are located in seismic map area having an effective peak velocity-related acceleration (A_v) value less than 0.15) are exempt from the requirements of these provisions.

Manufactured Housing of Category C and D shall comply with all the requirements of these provisions.