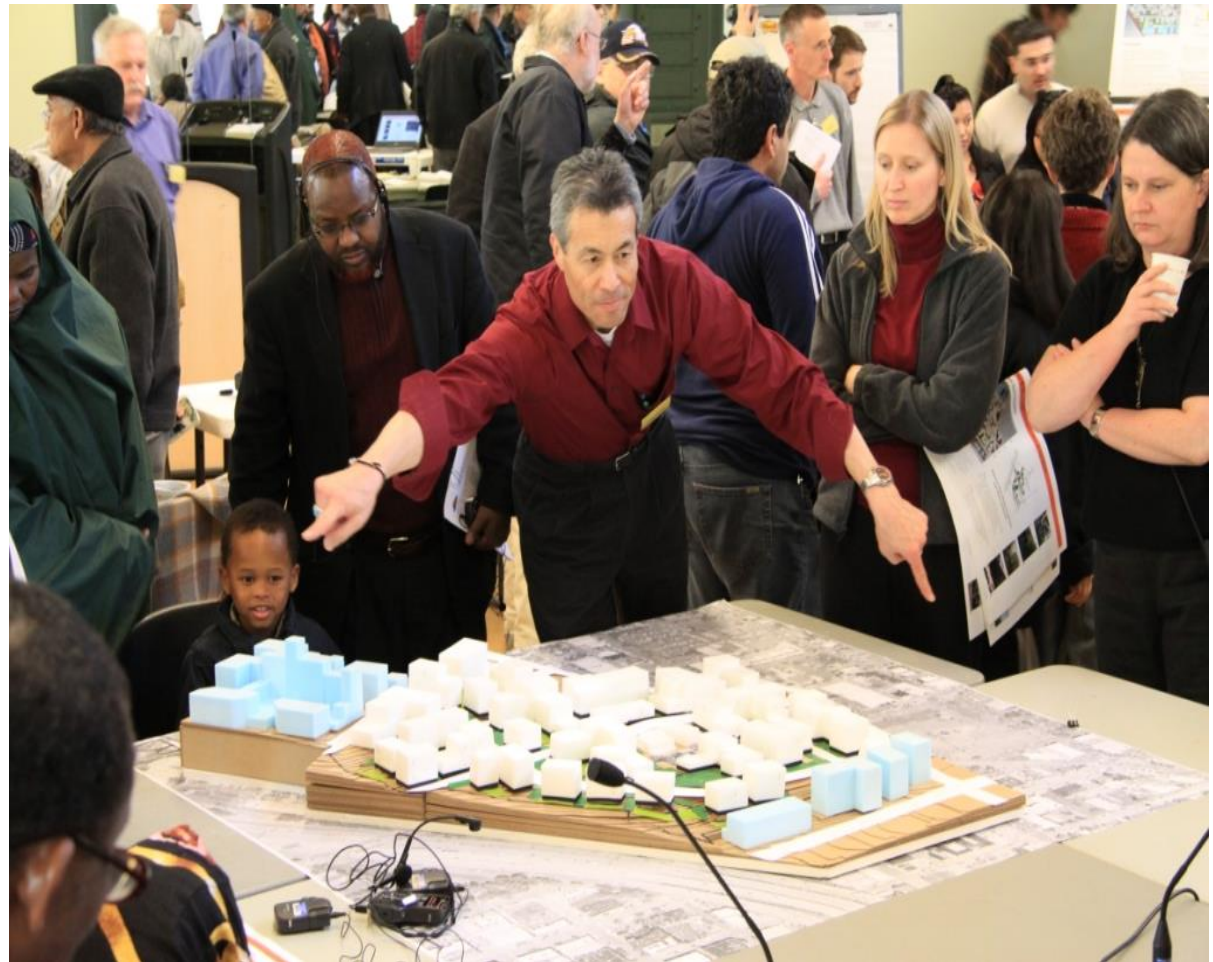
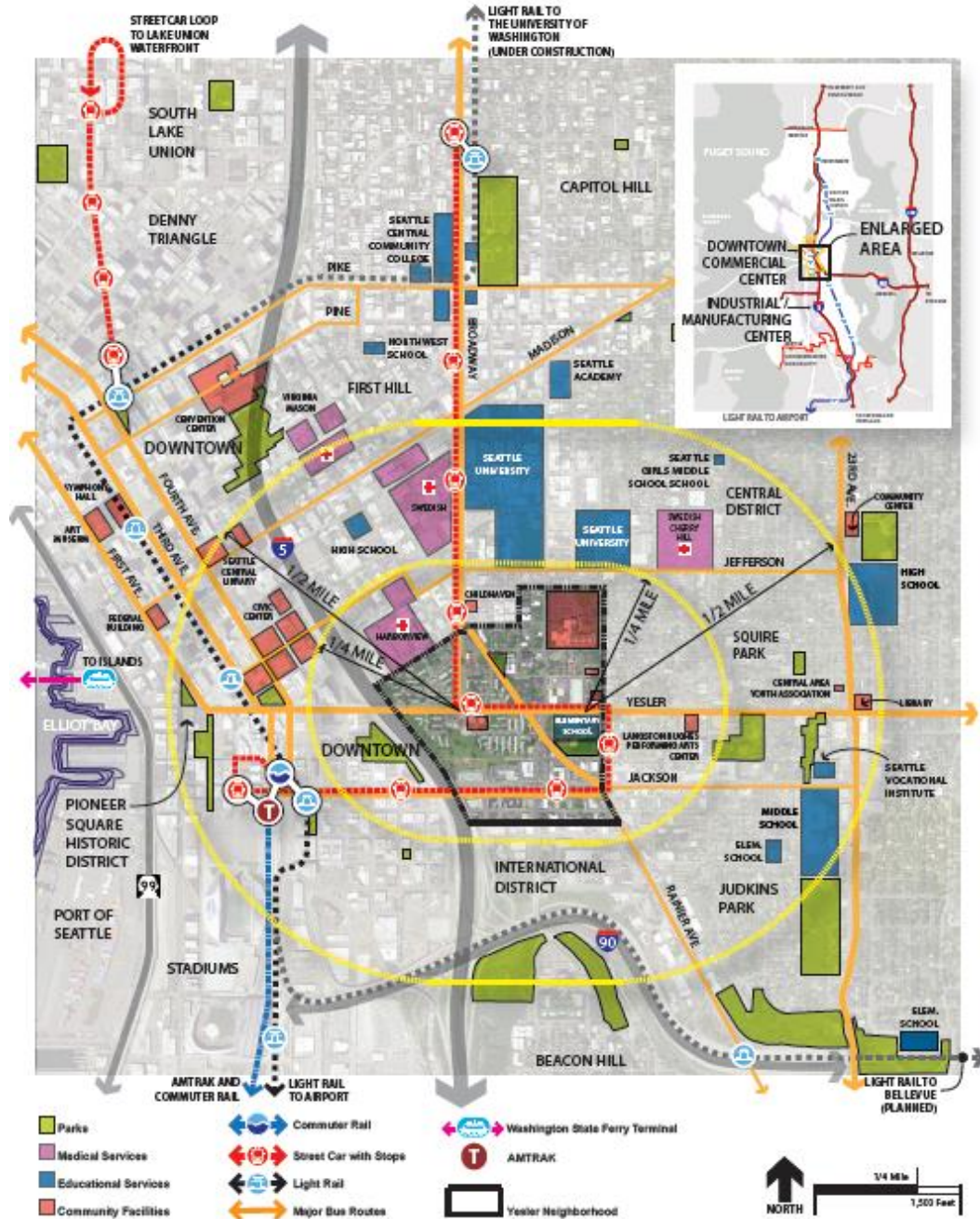


Yesler Terrace Core Values

- Social Equity
- Economic Opportunity
- Environmental Stewardship
- One-for-One Replacement Housing





CHOICE NEIGHBORHOODS INITIATIVE 2011 CITY MAP



An Evolving Neighborhood: The Redevelopment of Yesler Terrace



- 1 The Baldwin**
1305 E Fir St
15 renovated replacement units; completed
- 2 Washington Hall**
A historic performing arts center; renovation completed
- 3 First Hill Streetcar**
City streetcar connects residents with surrounding neighborhoods and other transportation hubs; completed
- 4 Anthem on 12th**
120 units (90 market-rate, 30 80% AMI); completed
- 5 Kebero Court**
1105 E Fir St
103 units (83 replacement, 20 60% AMI); completed
- 6 Horluchi Park P-Patch**
156 Boren Ave
28 gardening plots; completed
- 7 Batik**
123 Broadway
195 units (156 market-rate, 39 80% AMI, ground floor retail under construction, completion 2018)
- 8 Vulcan future development**
- 9 Modera**
290 units (213 market-rate, 77 80% AMI, construction beginning late 2017)
- 10 Seattle Tenth LLC**
Market-rate and 80% AMI; Future construction
- 11 Yesler Hillclimb**
A landscaped pedestrian staircase and accessible ramp; completed
- 12 Hoa Mai Gardens**
221 10th Ave S
111 units (70 replacement, 8 60% AMI, 33 80% AMI; under construction, completion July 2017)
- 13 Pedestrian Pathway**
Diagonal path from Alder St to Jackson St; under construction, completion 2018
- 14 Future phase**
Planned mixed-income housing
- 15 Yesler Terrace Park**
825 Yesler Way; under construction, completion 2018
- 16 Green Street Loop**
Half-mile, park-like neighborhood walkway; under construction
- 17 Raven Terrace**
820 Yesler Way
83 units (50 replacement, 33 60% AMI); completed
- 18 Epstein Opportunity Center**
120 8th Ave
Conversion of the historic Yesler Steam Plant to a community center; completed
- 19 Future phase**
4.41 acres available for office development, planned mixed-income housing; in marketing phase, existing housing remains
- 20 Red Cedar**
119 units (80 replacement, 39 60% AMI); under construction, completion 2018

* AMI - Area Median Income

■ Housing ■ Neighborhood Amenity ■ Future Phase

For more detail, visit seattlehousing.org





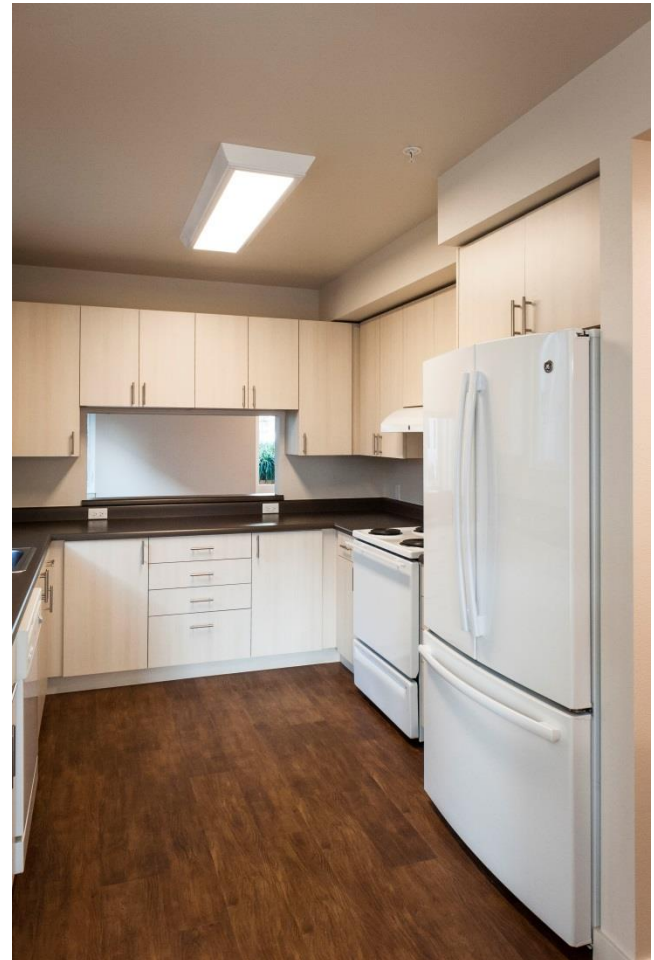
Old Yesler Housing



Hoa Mai Gardens



Breathe Easy Program



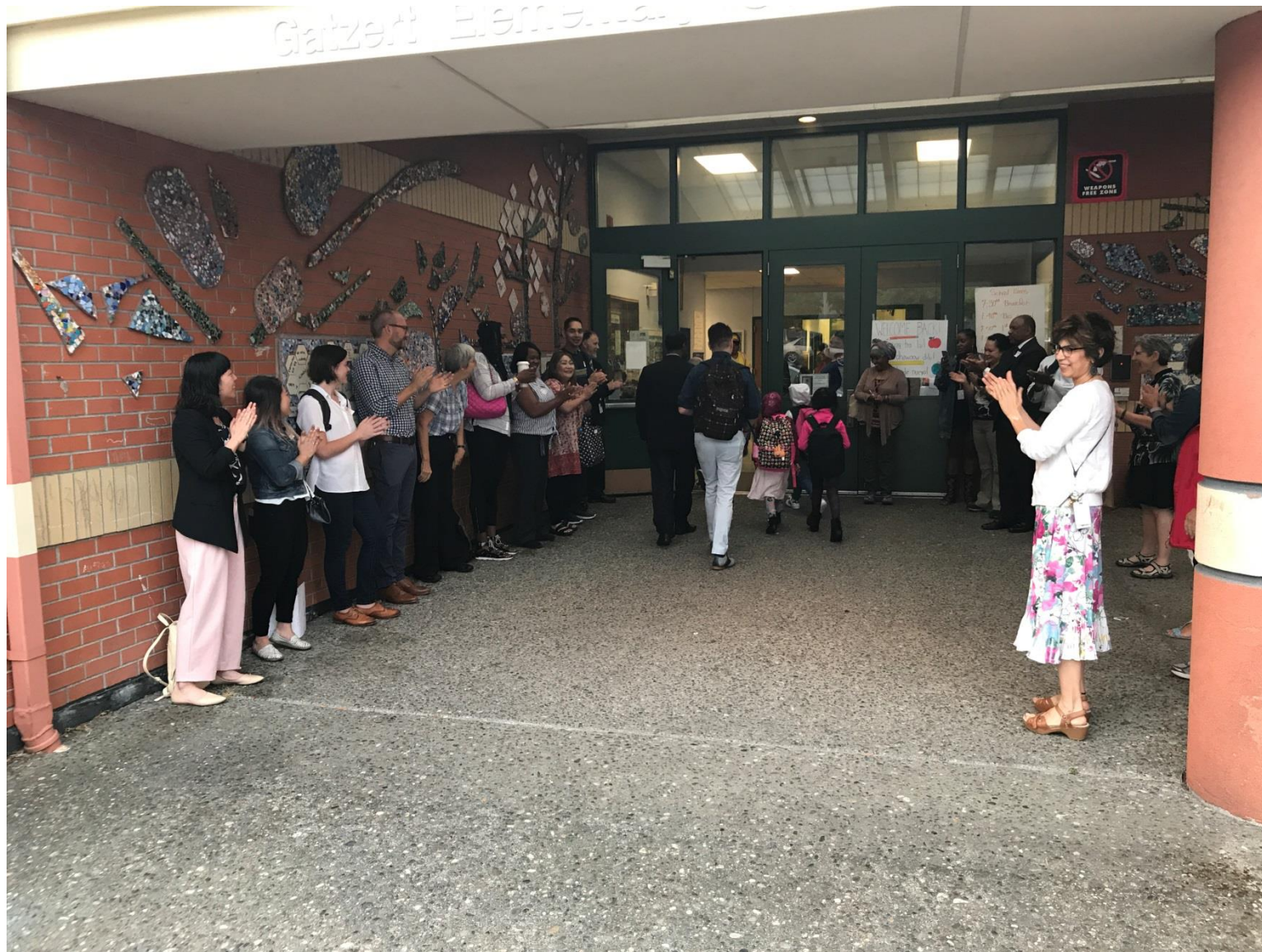
Community Health Workers







Bailey Gatzert Elementary School



Education Collaborative Metrics

- ▶ The percent of children ready for Kindergarten in six domains
- ▶ The percent of students proficient in English language arts (3rd through 8th grade)
- ▶ The percent of students proficient in mathematics (3rd through 8th grade)
- ▶ The percent of students missing fewer than 10 days of school (K through 5th)
- ▶ The percent of 12th graders receiving a high school diploma



Leveraging Relationships and Resources

- Seattle University
- Neighborhood House
- Catholic Community Services-Youth Tutoring Program
- City of Seattle Parks and Recreation
- Washington-Building Leaders of Change
- Therapeutic Health Services



From Partnership to Collaboration

Concept	Action
Begin at the beginning.	Examine: Why are you doing this?
	Ask: Is everyone here that should be?
	Examine: What do you <u>really</u> believe about the issue/population?
Develop and (later) refine your plan.	Conduct a gaps analysis.
	Consider changes to add or remove programs/partners.
Accountability: Plan for and commit to it.	Create regular check-ins (meet regularly).
	Develop and stick to a Data Calendar.
	Report to <u>all</u> stakeholders regularly.
Meet people where they are.	Professional Development
	Trust and Polarities workshops; using data effectively; collecting data efficiently; collecting data ethically.

2014/2015 Outcomes

Kindergarten Readiness

- ▶ The percent of students meeting **Kindergarten Readiness** indicators increased in all areas except physical readiness.
- ▶ The percent of students ready in all six **Kindergarten Readiness** domains increased from 20%-50%.

Math and English Language Arts

- ▶ In **math**, 3rd graders had the highest average scores.
- ▶ In **English language arts**, 4th graders had the highest average scores.
- ▶ With the exception of 5th grade English language arts, **Yesler Terrace students** at the elementary school level had higher average scores than students at Bailey Gatzert in both English language arts and math.
- ▶ **Yesler Terrace students** tend to have higher average scores than their comparison groups at neighborhood schools. The exceptions are 5th and 7th graders in English language arts.

2014/2015 Outcomes

12th Grade Completion

- ▶ The 12th grade completion rate **decreased** from 2013-14, and is far lower than the baseline.

Attendance

- ▶ In attendance, all grades except 2nd improved from the baseline.
- ▶ All cohorts have made steady progress in attendance each year since 2010.



Collaborative's Outcomes

- ▶ Changed how the work gets done.
- ▶ Increased perceptions of self-efficacy and community support.
- ▶ Collaborative viewed and used as a resource by school district.
- ▶ Increased high school completion.

Advocacy in Action

