

Housing Mobility-related Services NOFO | FR-6700-N-87

Background and Instructions for Opportunity Map Tool

Updated on: July 25, 2023 to incorporate terminology related to PHA's proposed housing mobility program service area and to provide instructions for selecting multiple census tracts.

Please note this document may be updated as we work to ensure the instructions are as clear as possible for PHAs.

Background

In section G. Other Submission Requirements, HUD describes the elements that must be submitted in the Form HUD-52515: Funding Application. In Part G, Soundness of Approach, applicants must submit their proposed opportunity map. Specifically:

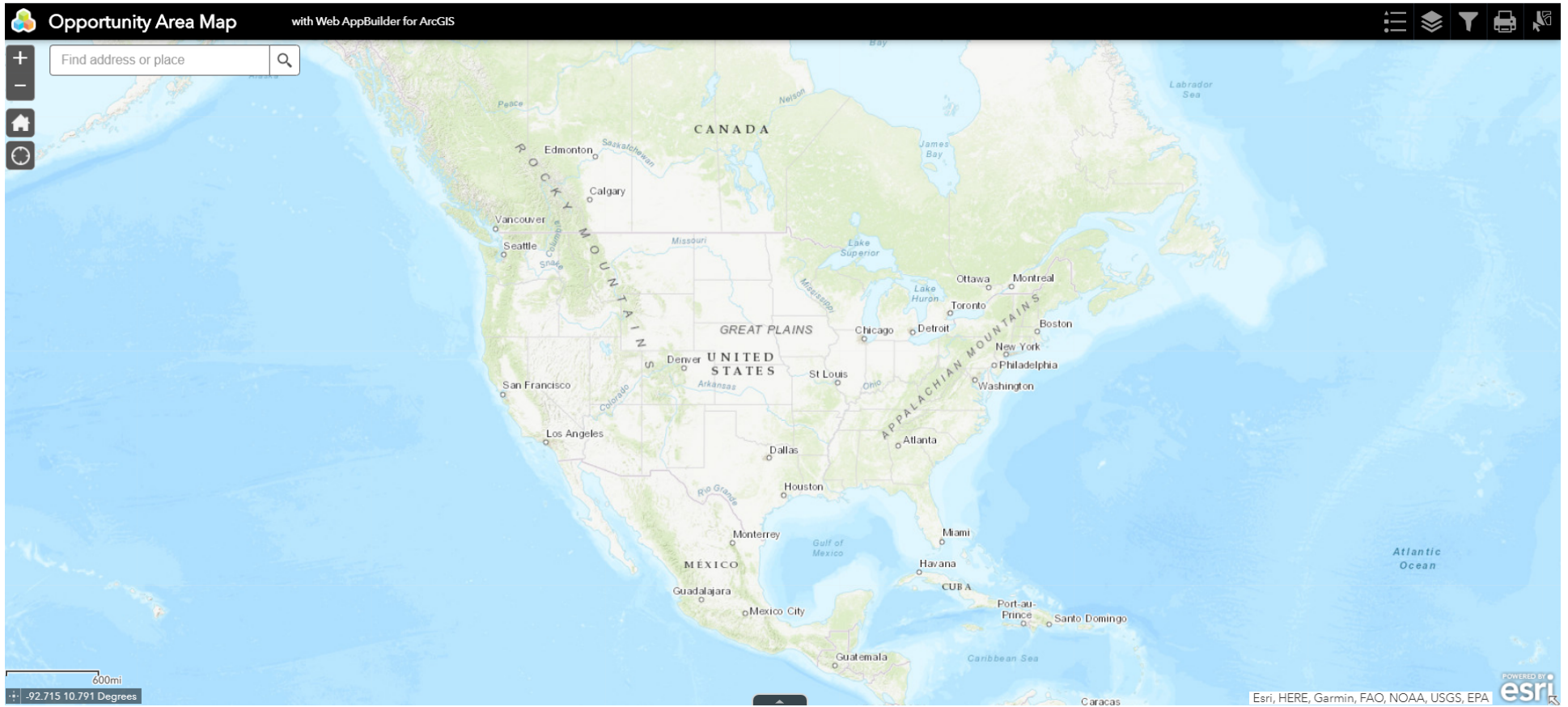
“The PHA must submit an opportunity map that identifies census tract-based opportunity areas in the proposed housing mobility program service area. An opportunity area is defined as a census tract with a family poverty rate of 10 percent or lower. PHAs may develop their own opportunity map or use HUD's opportunity mapping tool at <https://hud.maps.arcgis.com/apps/webappviewer/index.html?id=aa65e712287240bda9b8438a3935854d>. Step-by-step instructions on how to use the tool, including screen shots, are available at https://www.hud.gov/program_offices/public_indian_housing/programs/hcv/housingmobility

After selection, HUD will work with PHAs to finalize the opportunity map. During the finalization process, HUD, at its sole discretion, may allow up to 10 percent of the PHA's opportunity areas, with substantial available local data, to exceed the 10 percent poverty rate threshold.”

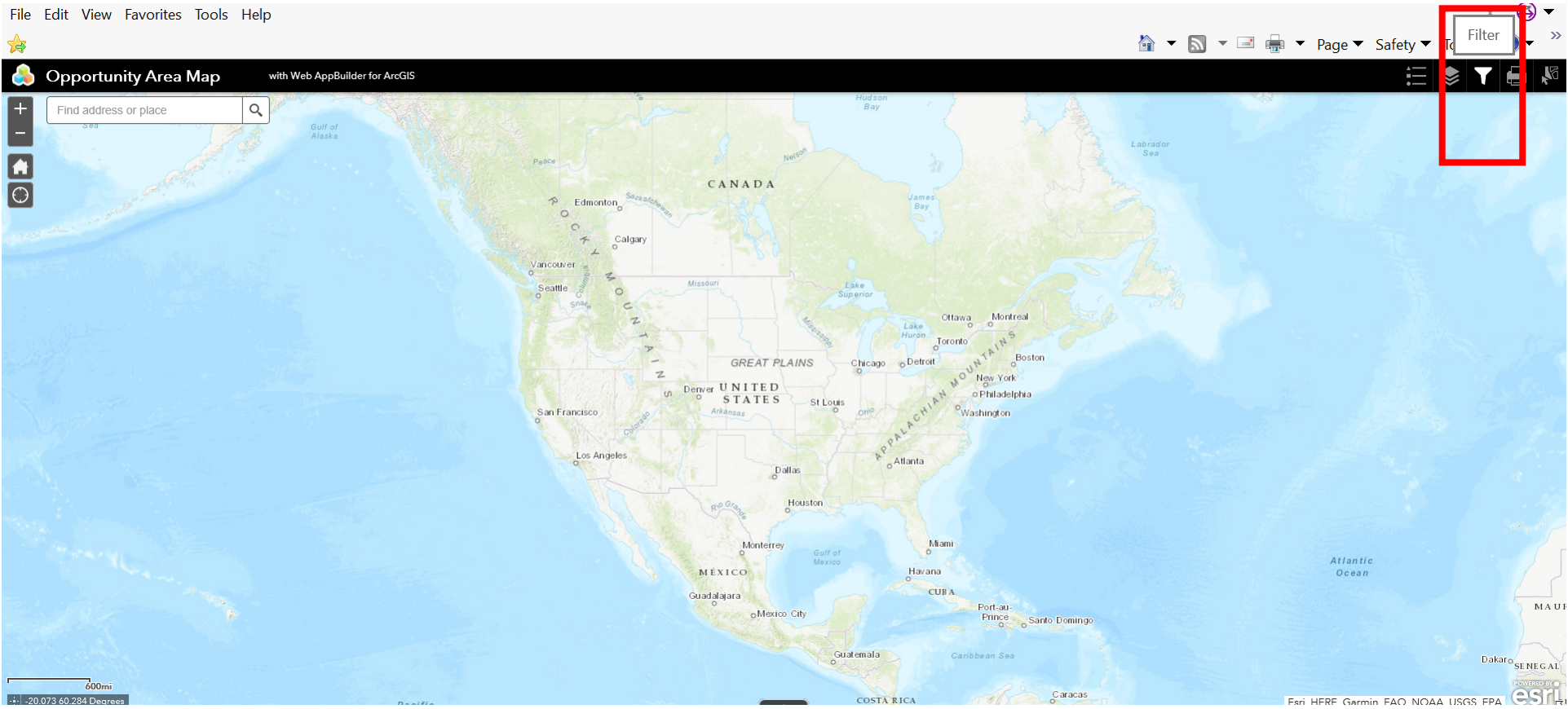
This document provides step-by-step instructions on how to use the HUD-developed opportunity mapping tool. For purposes of this NOFO, HUD's minimum criteria for an opportunity area is a Census tract in which the family poverty rate is less than 10 percent.

Opportunity Map Tool Step-by-Step Instructions

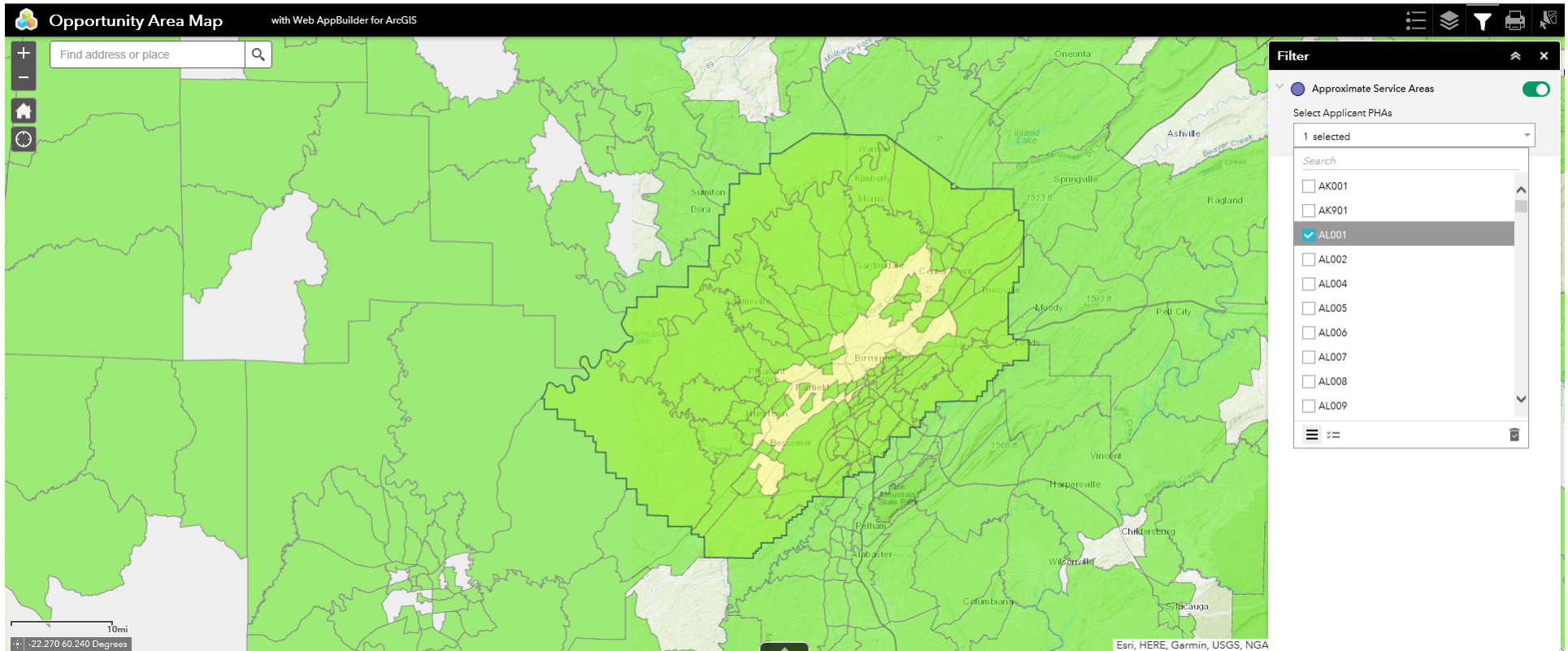
Step 1: Go to the [Opportunity Map](#) tool.



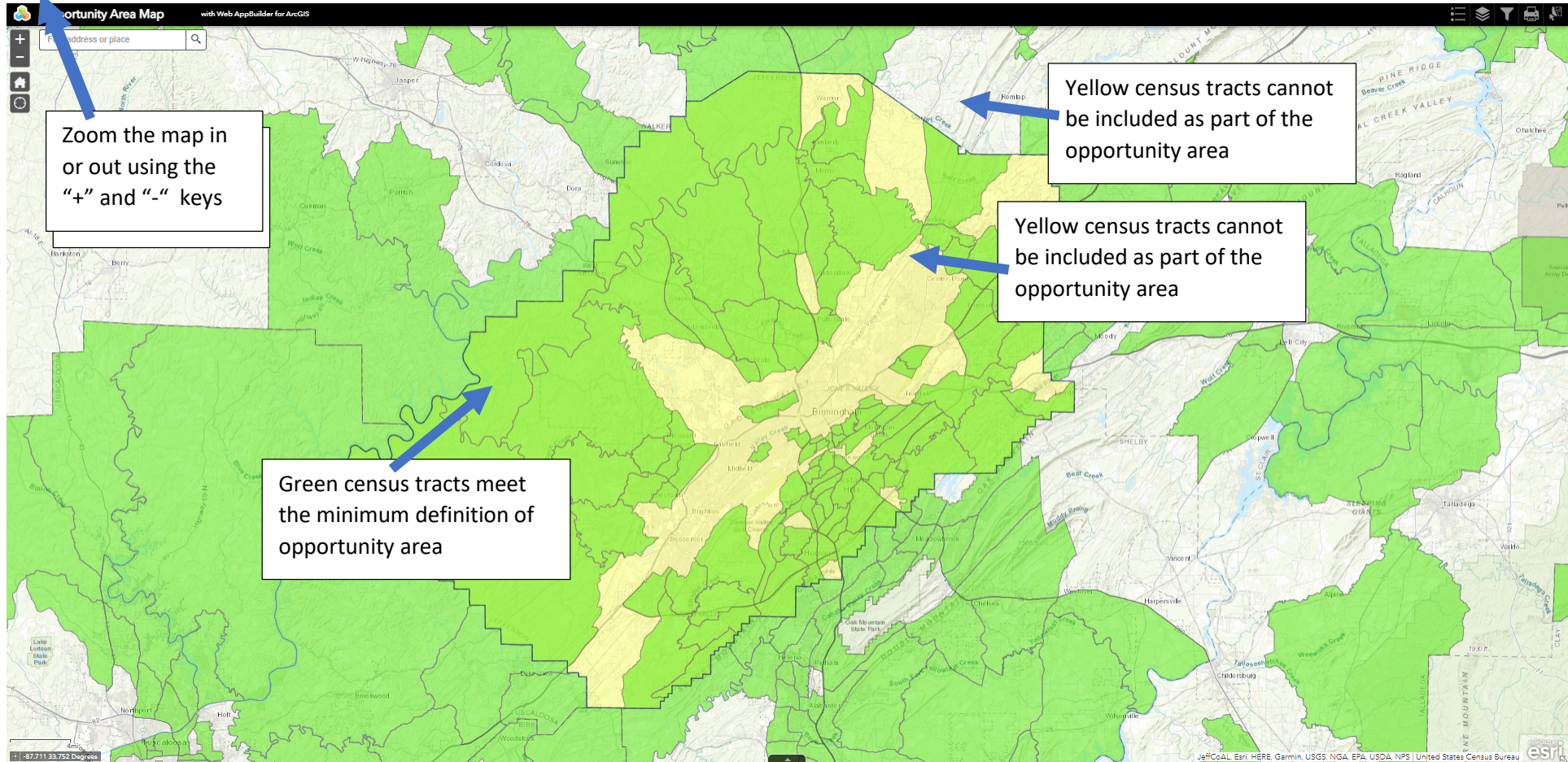
Step 2: Locate the Filter button in the upper-right corner of the map.



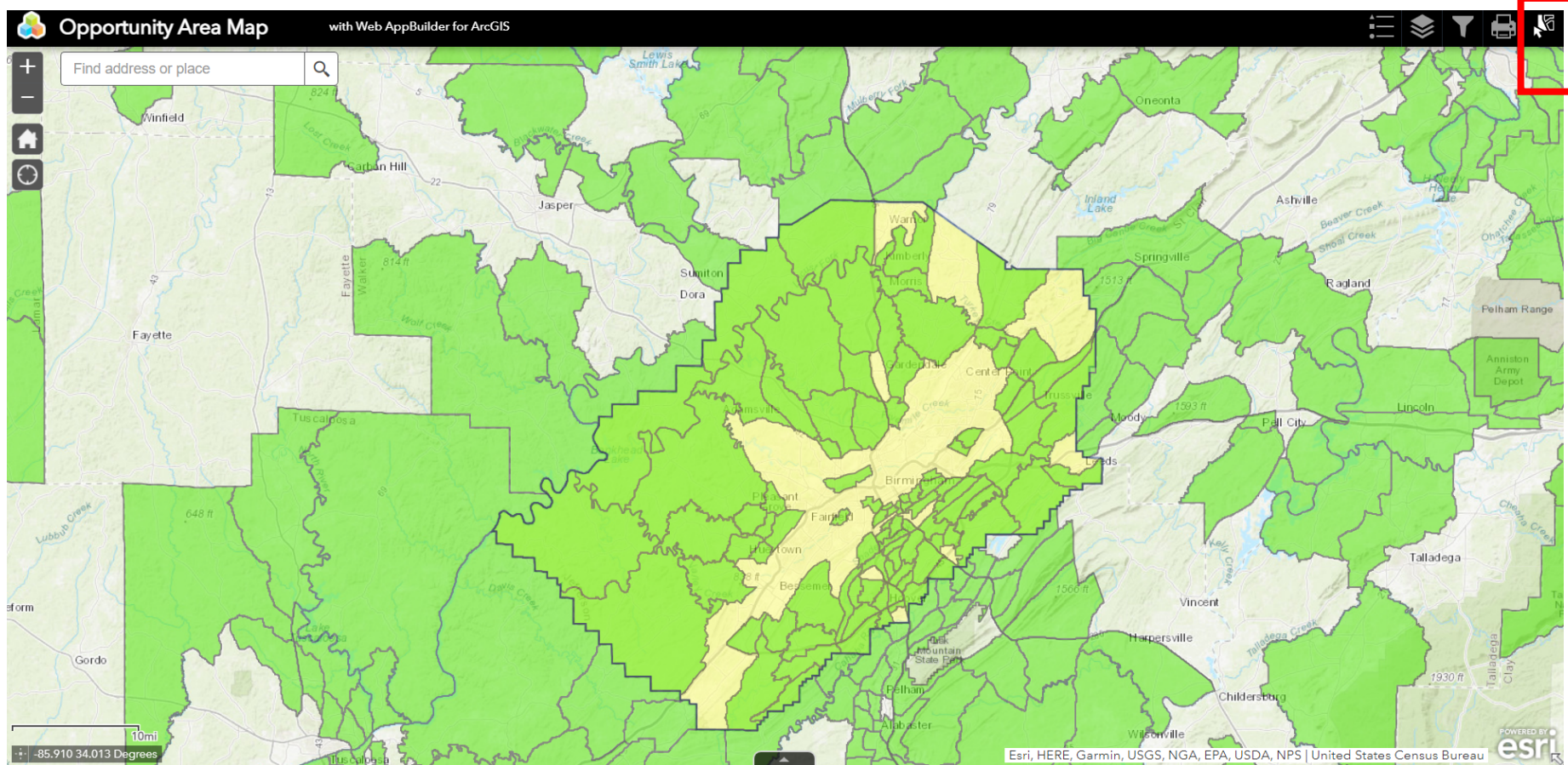
Step 3: Click on the dropdown menu and type in the PHA code(s) of the PHA(s) applying. Check the box next to the name of the PHA that will be applying. Once selected, click on the top of the dropdown to close the field. The map will automatically zoom to the location of the PHA. The PHA's estimated service boundary outlined in a darker blue.



Step 4: Familiarize yourself with the opportunity map tool for your PHA's proposed housing mobility program service area. Areas in green are census tracts where the family poverty rate is 10 percent or less and are eligible to be part of the PHA's opportunity areas. Areas in yellow are census tracts where the family poverty rate is over 10 percent.

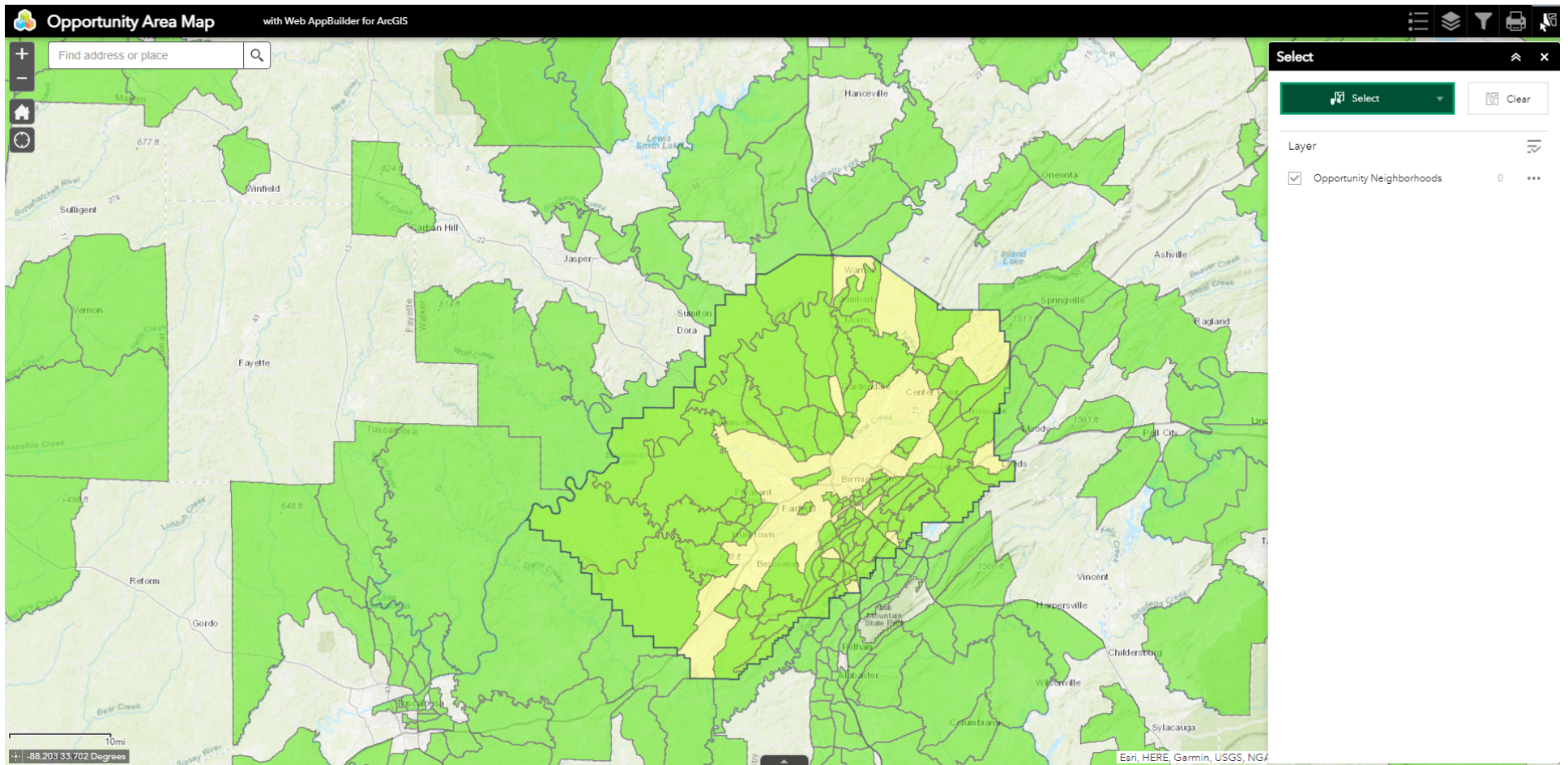


Step 4: Locate the Select Tool button in the right corner of the map. Click on the select button.

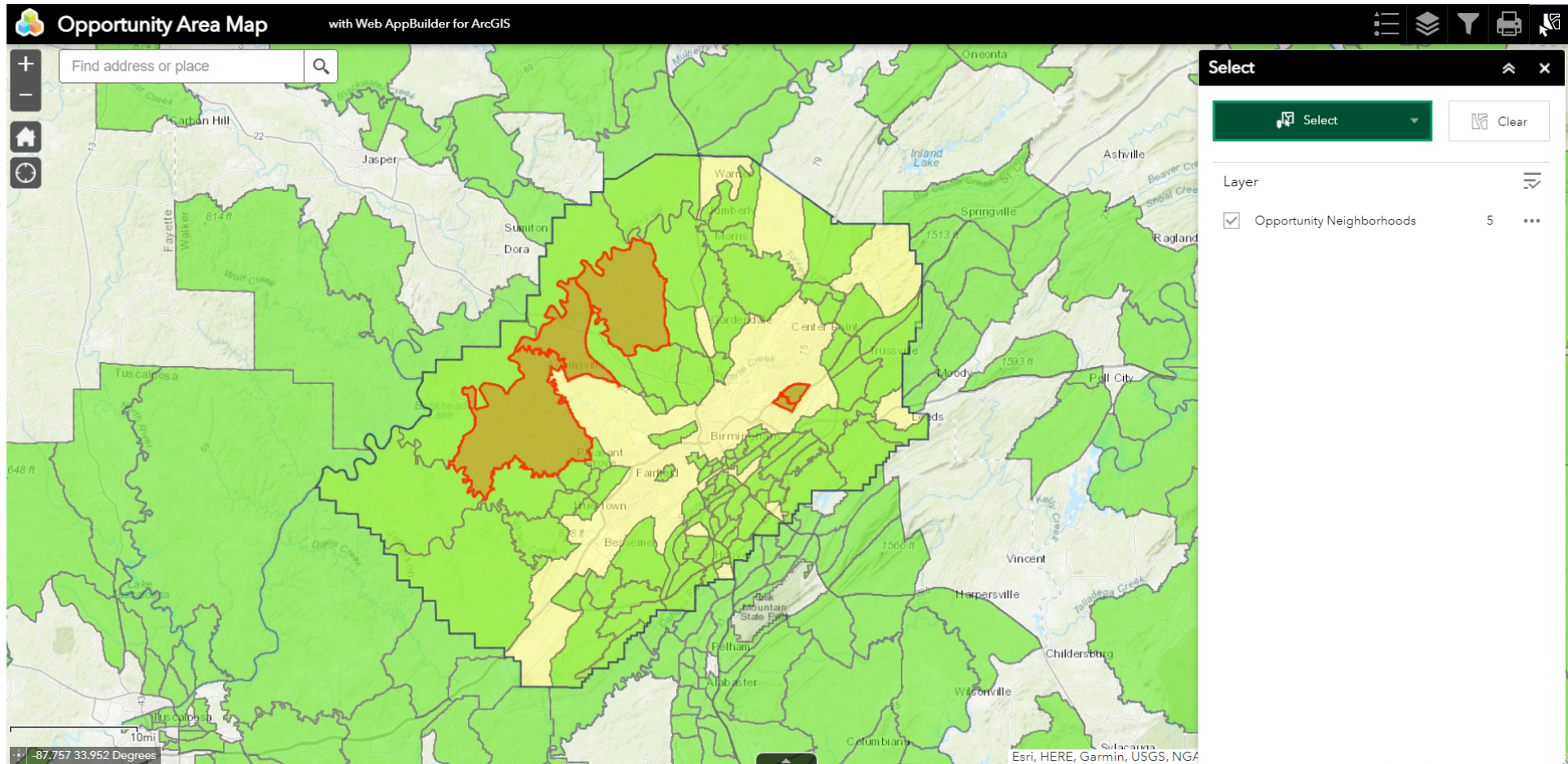


Step 5a: Begin selecting the PHA(s) opportunity area census tracts. After clicking the select button, the select menu will appear. You do not need to do anything with the select menu.

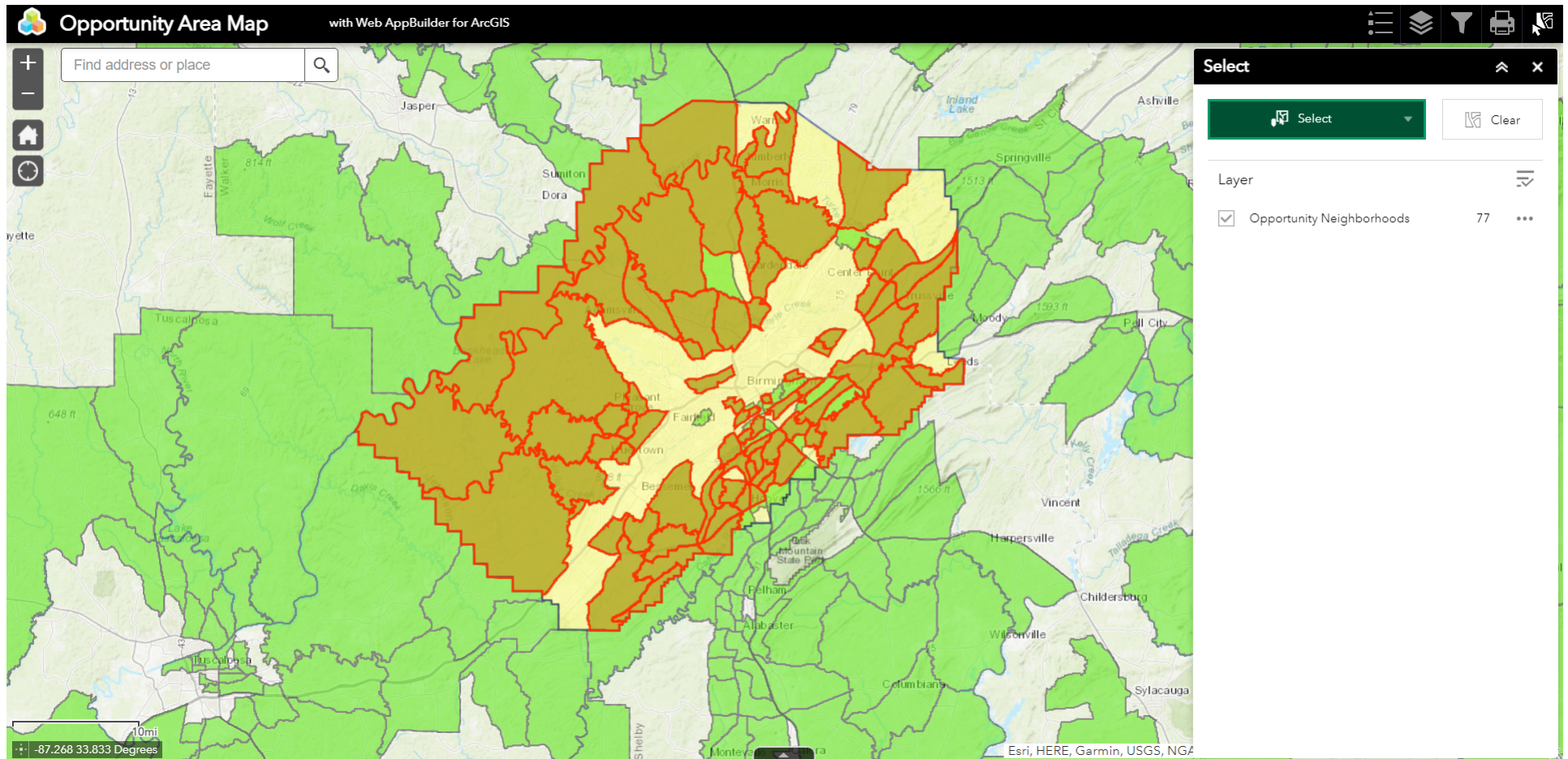
Optional step: Change how the tool will select opportunity area census tracts. The tool automatically defaults to “select by point” where census tracts will be selected one-by-one. You can also choose to “select by polygon” which allows you to draw an area and select multiple census tracts at once. To change to “select by polygon” click on the select menu drop down and change to “select by polygon.”



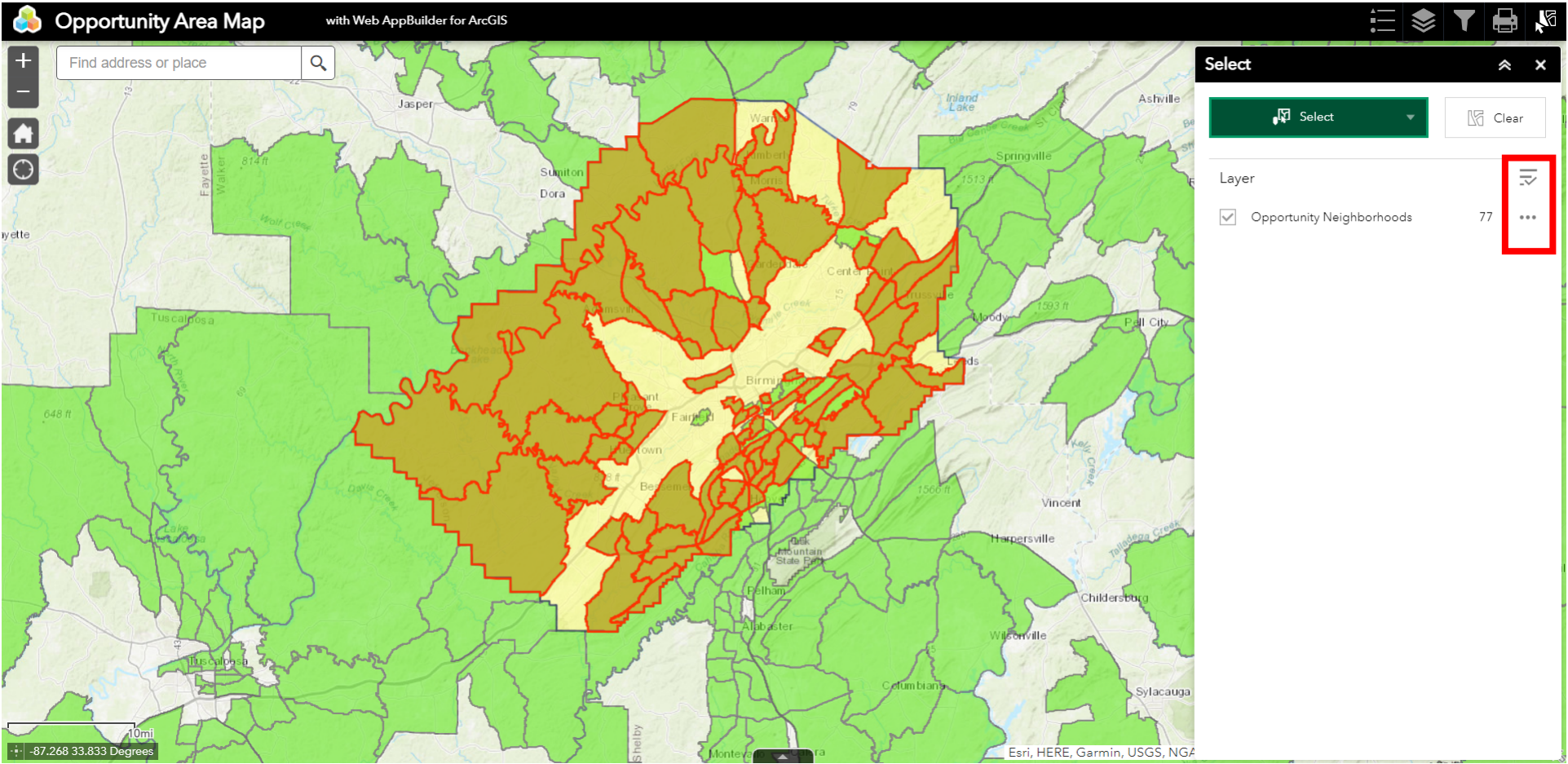
Step 5b: Select the green census tracts the PHA is selecting as their opportunity areas. To select multiple census tracts, select your first census tract, then press and hold the SHIFT key while using the mouse to click on additional census tracts. Tip! If you accidentally add a tract you can hold down the CTRL key to remove the census tract.



Step 6: Complete selection of opportunity area census tracts. Tip! PHAs do not have to select all of the green census tracts in their proposed housing mobility program service area. HUD's definition is the minimum criteria a PHA can apply when proposing their opportunity areas.



Step 6: Once the opportunity areas have been selected, click on the button with three dots on the right hand of the screen.



Step 7: In the dropdown menu, select, “Export to CSV File.”

The screenshot displays the 'Opportunity Area Map' interface, which is powered by 'Web AppBuilder for ArcGIS'. The main map area shows a geographical region with various colored overlays representing different opportunity areas. A search bar at the top left allows users to 'Find address or place'. On the right side, a 'Select' panel is open, showing a list of layers. The 'Opportunity Neighborhoods' layer is selected, and a dropdown menu for 'Selection actions' is visible. The 'Export to CSV file' option is highlighted with a red rectangle. Other options in the menu include 'Zoom to', 'Pan to', 'Flash', 'Export to feature collection', 'Export to GeoJSON', 'Statistics...', 'Create layer', 'Save to My Content', 'View in Attribute Table', and 'Clear selection'.

Opportunity Area Map with Web AppBuilder for ArcGIS

Find address or place

Select

Layer

☒ Opportunity Neighborhoods 77

Selection actions

- Zoom to
- Pan to
- Flash
- Export to CSV file**
- Export to feature collection
- Export to GeoJSON
- Statistics...
- Create layer
- Save to My Content
- View in Attribute Table
- Clear selection

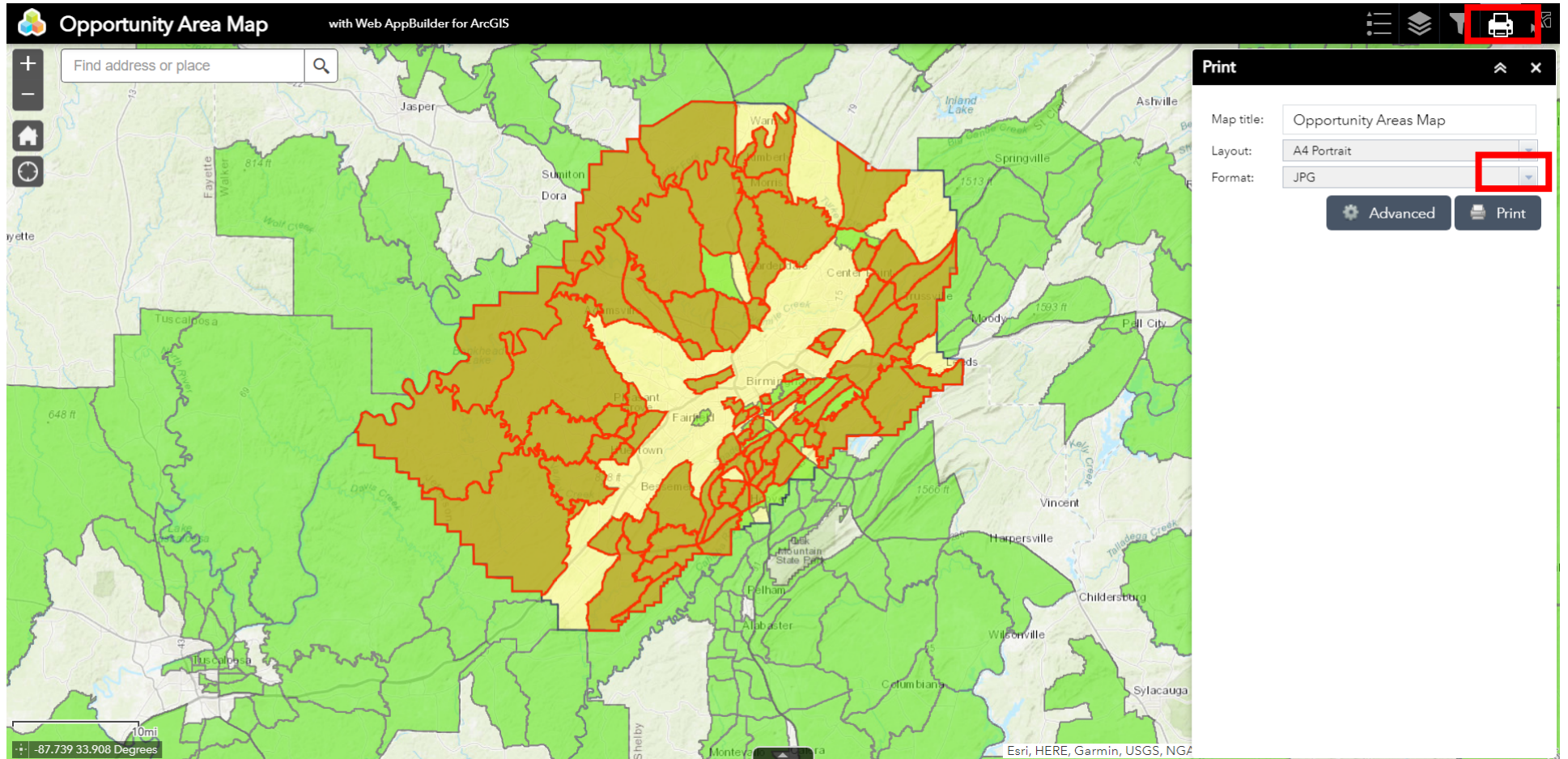
Step 8: Save the CSV file and return to the map.

AutoSave Off features.csv Search															
File Home Insert Page Layout Formulas Data Review View Help Kofax PDF															
Clipboard		Font		Alignment		Number		Conditional Formatting		Format as Table		New			
A1		OBJECTID													
	A	B	C	D	E	F	G	H	I	J	K	L	M	N	O
1	OBJECTID	GEOID	STATE	COUNTY	TRACT	NAME	STUSAB	Total_Fam	Families_	Family_Pc	Shape__A	Shape__L	x	y	
2	8555	1.07E+09	1	73	14415	Census Tr	AL	1237	93	7.5	13634440	28094.1			
3	8556	1.07E+09	1	73	14414	Census Tr	AL	1633	54	3.3	12777266	19282.19			
4	8559	1.07E+09	1	73	10001	Census Tr	AL	1318	132	10	15961675	20304.21			
5	8562	1.07E+09	1	73	11117	Census Tr	AL	1469	82	5.6	31005324	23645.44			
6	8563	1.07E+09	1	73	12003	Census Tr	AL	490	31	6.3	10303792	15936.86			
7	8564	1.07E+09	1	73	12804	Census Tr	AL	691	30	4.3	6720943	13471.39			
8	8566	1.07E+09	1	73	12908	Census Tr	AL	1177	113	9.6	5498102	10035.4			
9	8570	1.07E+09	1	73	10806	Census Tr	AL	1569	38	2.4	18114151	27229.07			
10	8571	1.07E+09	1	73	12916	Census Tr	AL	1062	16	1.5	6563818	14674.48			
11	8575	1.07E+09	1	73	10702	Census Tr	AL	1301	20	1.5	4511938	9955.122			
12	8593	1.07E+09	1	73	12703	Census Tr	AL	1656	0	0	47035085	47697.48			
13	8611	1.07E+09	1	73	10705	Census Tr	AL	951	6	0.6	3097914	8136.575			
14	8612	1.07E+09	1	73	10706	Census Tr	AL	936	61	6.5	10809342	14968.69			
15	8613	1.07E+09	1	73	10801	Census Tr	AL	1931	114	5.9	7283176	17093.83			
16	8654	1.07E+09	1	73	10804	Census Tr	AL	814	13	1.6	10168669	18752.9			
17	8655	1.07E+09	1	73	11206	Census Tr	AL	1629	68	4.2	78681456	45397.29			
18	8656	1.07E+09	1	73	11500	Census Tr	AL	1791	57	3.2	1.35E+08	84310.68			
19	8657	1.07E+09	1	73	11704	Census Tr	AL	1173	60	5.1	98019113	64235.74			
20	8670	1.07E+09	1	73	12001	Census Tr	AL	1065	51	4.8	52655673	35564.47			
21	8676	1.07E+09	1	73	11208	Census Tr	AL	1196	84	7	10974144	15368.11			
22	8689	1.07E+09	1	73	12200	Census Tr	AL	662	27	4.1	1.76E+08	106409.1			

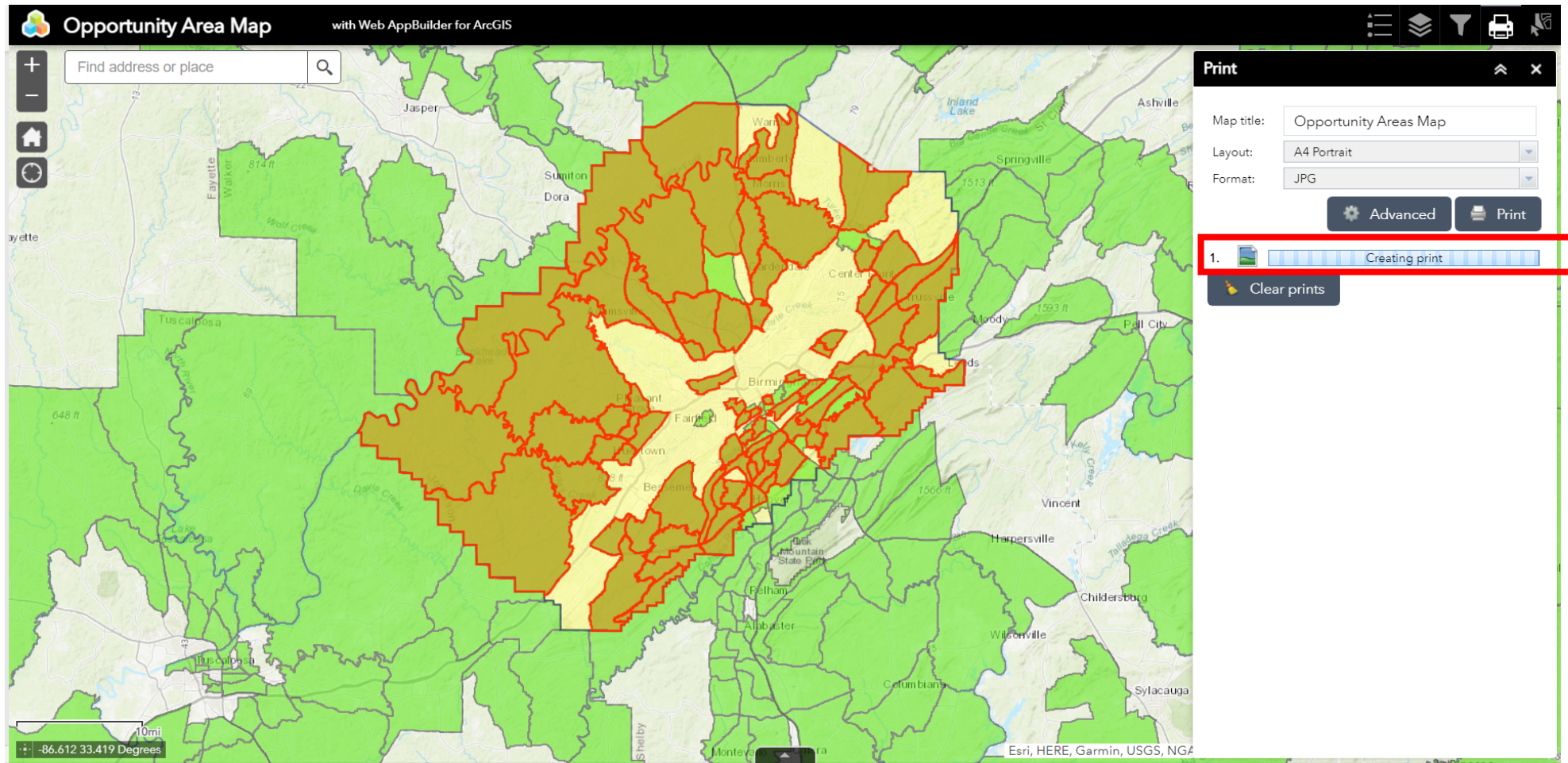
The individual column names and descriptions for the CSV file are provided below:

Column Name	Column Description
GEOID	Geographic identifier of the feature
STATE	State FIPS
COUNTY	County FIPS
TRACT	Tract FIPS
NAME	Name of Census Tract
STUSAB	State abbreviation
Total_Families	Total number of families in the census tract
Families_In_Poverty	Total families in the census tract with income in the past 12 months below poverty level
Famil_Poverty_Rate	Ratio of families with income in the past 12 months below poverty level relative to the total number of families in the census tract

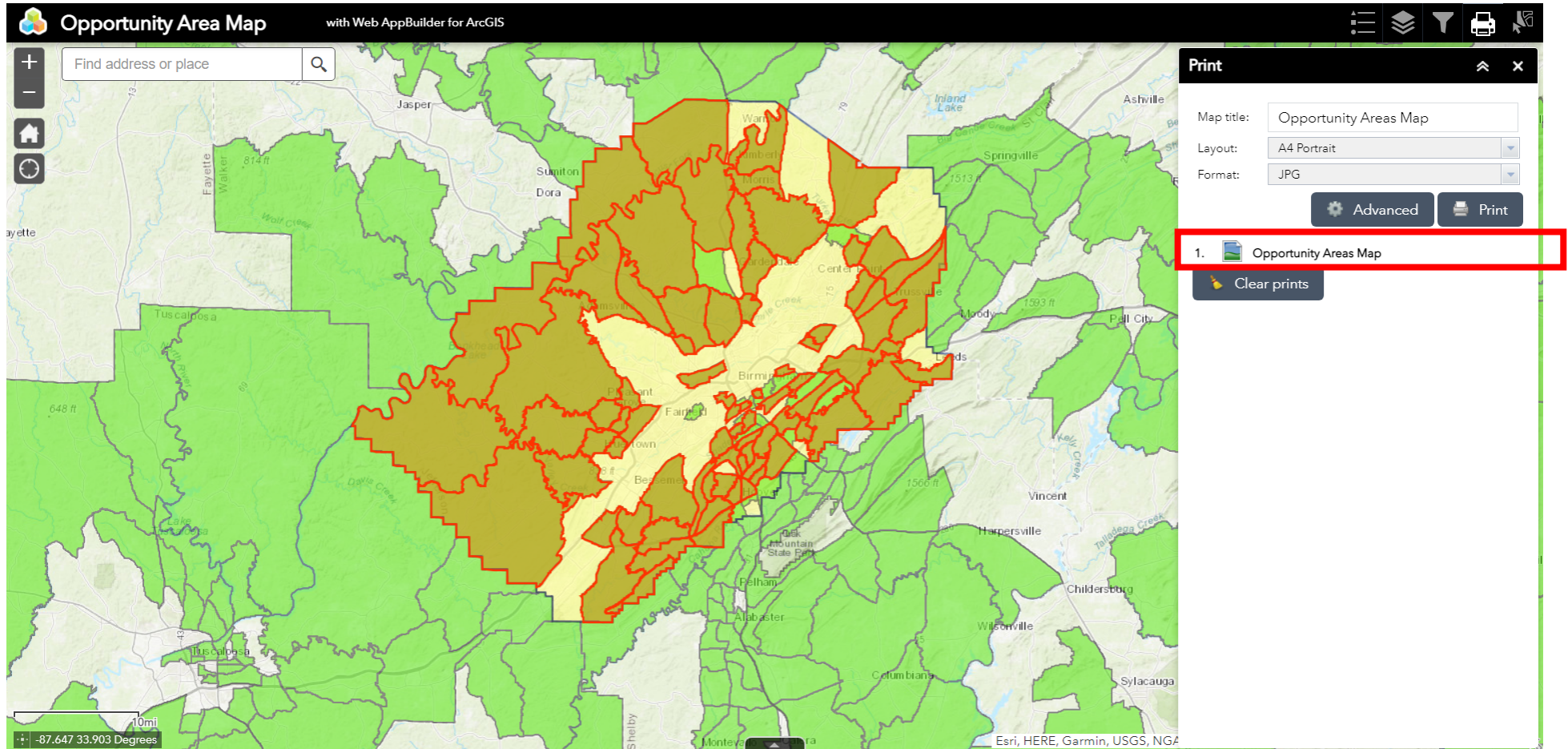
Step 9: Save/Print the map



Step 10: Save/print the map



Step 11: Print Map. Click on the “Opportunity Areas Map” item.



Step 12: Print Map

