



# Choice Neighborhoods

Celebrating 6 Years of Revitalizing Communities



GREETINGS

*from*

BOSTON

MASS.

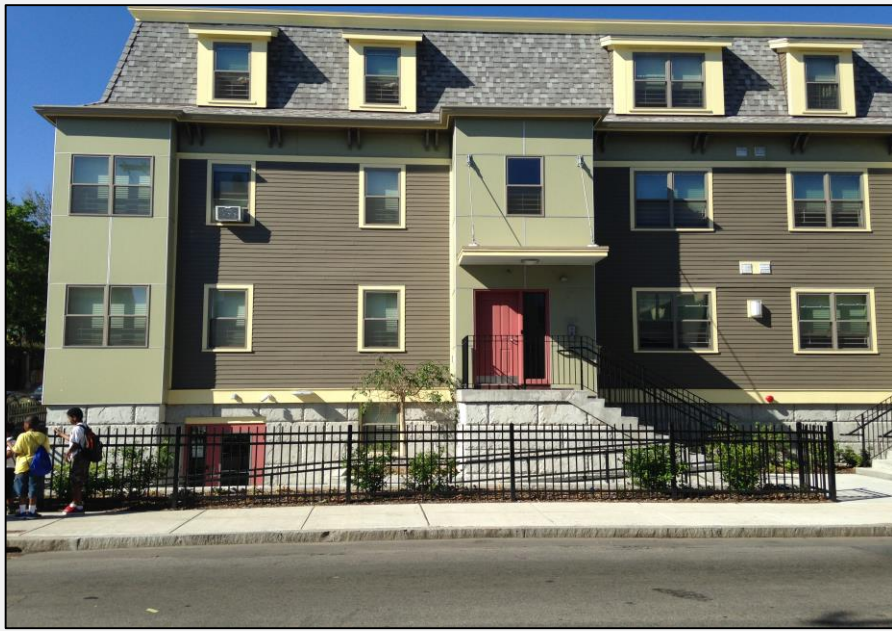


## Housing Investments in Dorchester



- Boston's Dorchester neighborhood becomes first to complete Choice Neighborhoods housing program with the completion of 202 units
- Includes both new construction and multifamily/HUD-assisted rehabilitation







Located Next to Choice Replacement Housing: the Vacant Pearl Meats Factory





# Critical Community Improvements: Vacant Pearl Meats Building Becomes CommonWealth Kitchen Production Facility

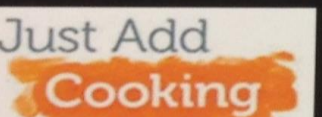
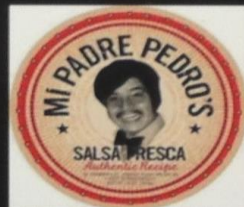








# A sampling CropCircle Kitchen businesses:





# Critical Community Improvements: Business Façade Improvements

Before: Storefronts on the Quincy Corridor



After: Targeted improvements improve an entire block





## CCI Funding Allows for Expanded Free Neighborhood Wifi Access

**30,000**

**BOSTON RESIDENTS  
NOW HAVE FREE  
PUBLIC WIFI**

THANKS TO CHOICE NEIGHBORHOODS

**#WORKTHATCOUNTS**





Greetings  
from



ILLINOIS



## Former Grove Parc Plaza - 378 Units of HUD-assisted Housing





## New Housing Replaces Grove Parc Plaza









# Renew Woodlawn

*Make It Your Home!*

## Renew Woodlawn Sponsored Events



## Renew Woodlawn Outreach



## Renew Woodlawn Homeowners



## NHS Homebuyer Education Classes

April, June, August, October, November | 140+ people received Homebuyer Certificate onsite at WRC



## What is Renew Woodlawn?

- Acquires and rehabilitates vacant homes for homeownership
- Unique market building partnership
- Improvements made to 38 homes
- Provides education classes to consumers
- Includes marketing campaigns such as realtor bus tours

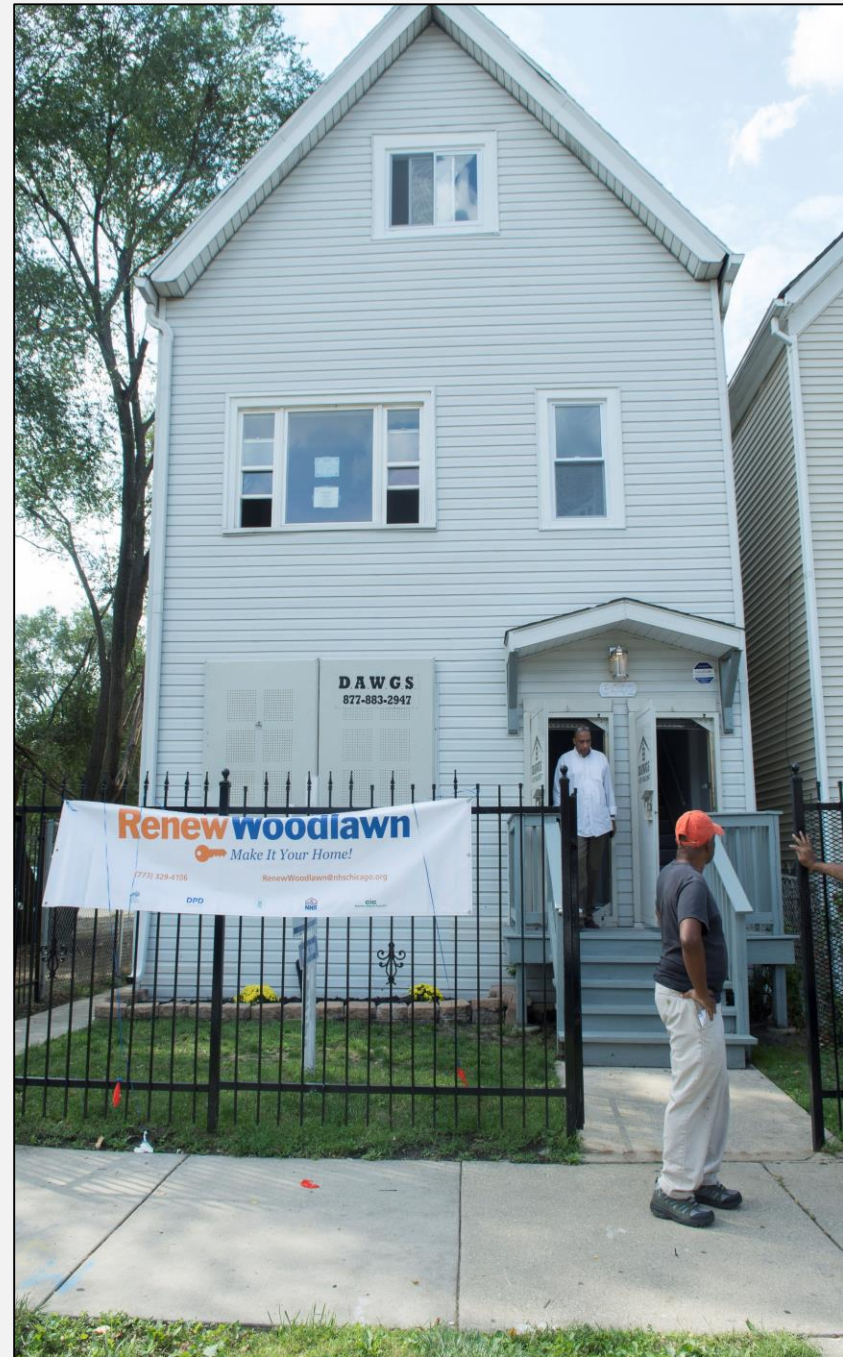




## A Vacant Property Rehabilitated through Renew Woodlawn – Before and After









*Greetings from*





# Iberville Public Housing Development – Before

*(pictured with the Treme Brass Band)*





## Historic Rehabilitation in Iberville – Construction to Completion

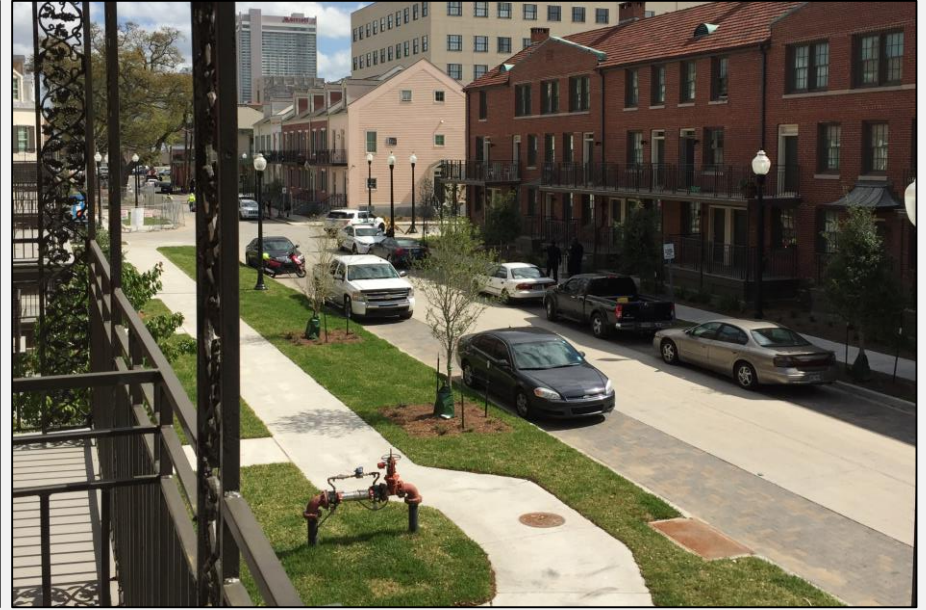








## Historic Rehabilitation – A Closer Look





## New Construction in Iberville Complements the Historic Rehabilitation





## New Orleans Employment Partnerships

- New Orleans Hospitality Training Program and its hotel management subsidiary developed a vacant warehouse into a Homewood Suites hotel
- Urban Strategies, as the People lead, collaborated to design and deliver customized training to prepare public housing residents for hospitality positions
- Five participants in the initial pilot program were hired and retained after the first 60 days





*Greetings  
from*

SAN FRANCISCO

CALIF.



## Alice Griffith Public Housing Development – Before





## Replacement Housing is Constructed across from Alice Griffith Site





# Alice Griffith Replacement Housing















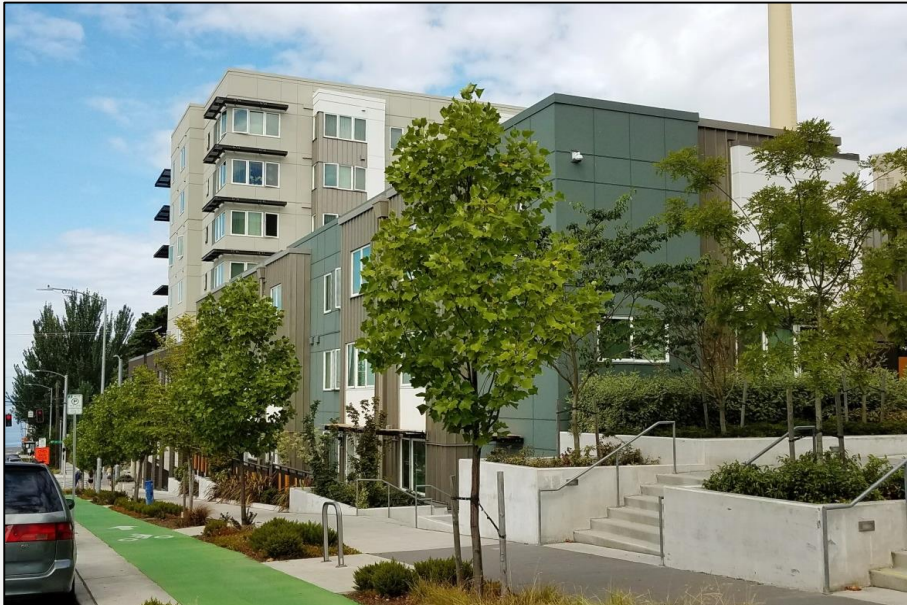
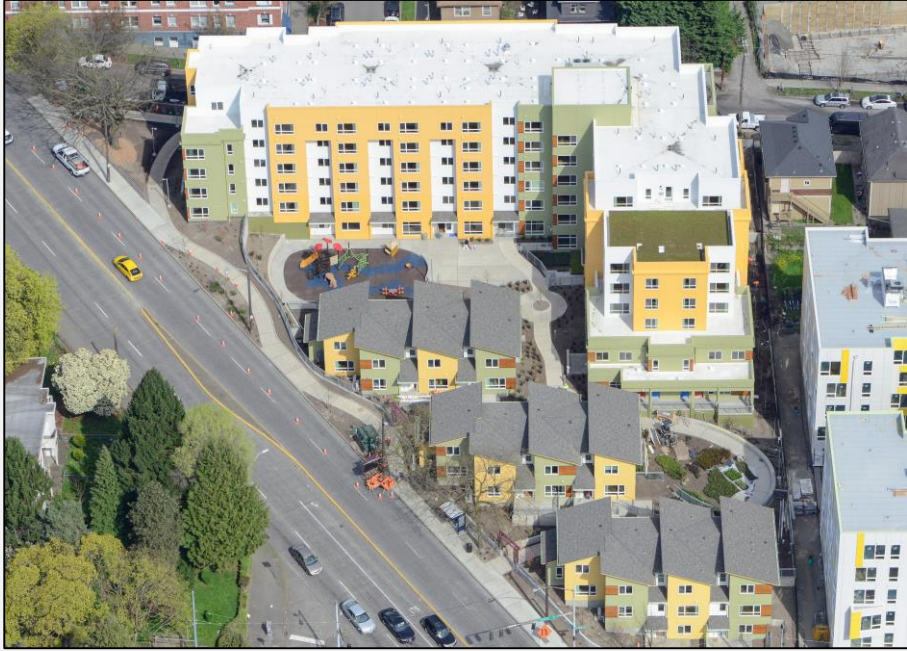


## Yesler Terrace Public Housing Development – Before





# New Replacement Housing throughout the Yesler Neighborhood

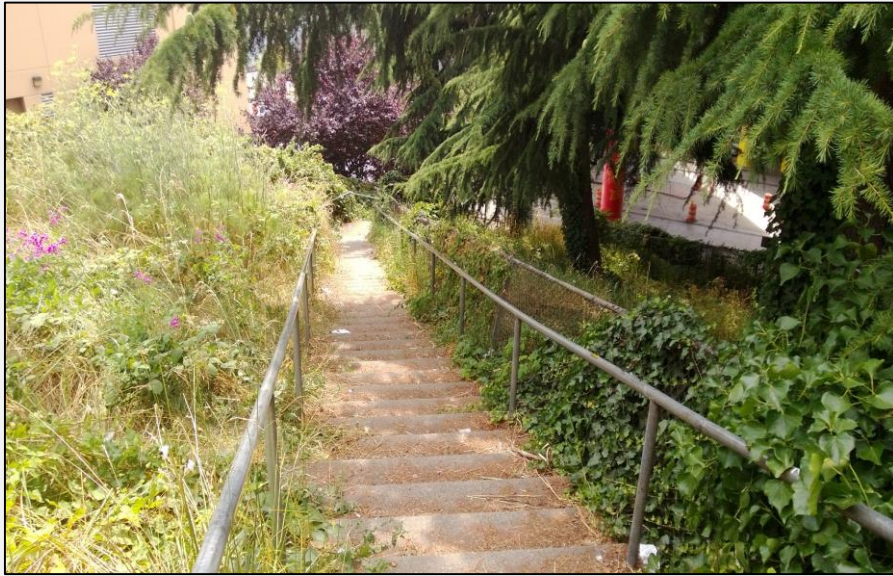








Before



## Seattle's 10<sup>th</sup> Avenue Hill Climb

- Connects Yesler to International Shopping District below
- Directly connected to replacement housing
- CCI funded activity
- Replaces obsolete infrastructure with accessible, attractive park

After





## Seattle's Education Partnerships

- Cradle-to-college educational collaboration between the Seattle Housing Authority and Seattle University
- Seattle Public Schools and local nonprofits as key partners
- Inspired by the Harlem Children's Zone
- Partnerships have led to improved attendance
- More than a 30% gain in kindergarten readiness





66548<sub>3</sub>

*Greetings from*



**OHIO**



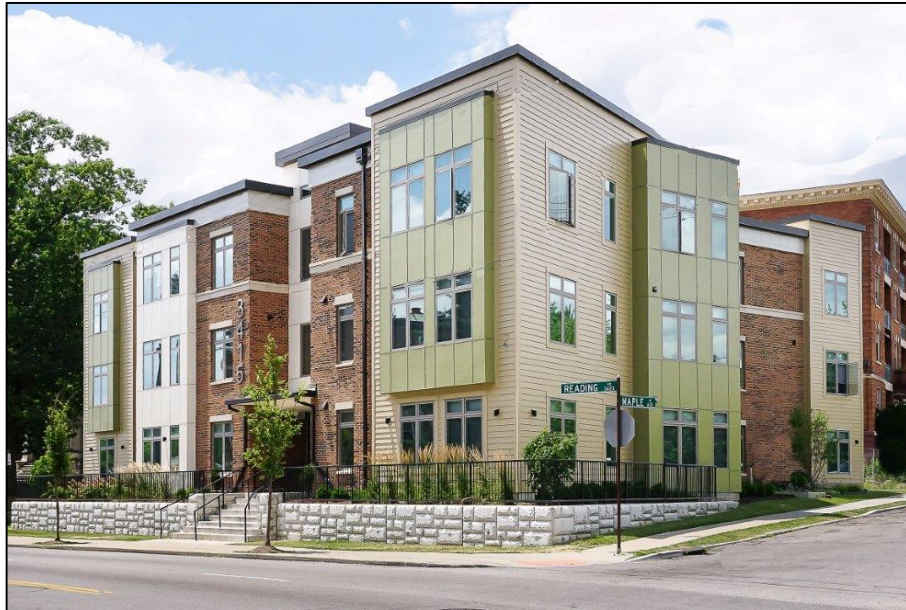
## Coming Soon: Avondale Town Center

Avondale's neighborhood plan includes mixed use redevelopment of a distressed shopping center. Redevelopment will include 75,000 sq. ft. of neighborhood serving retail and 69 new housing units.





# Housing Investments along Avondale's Commercial Corridor





**GREETINGS** from

23:-





## Transforming Wheatley Courts – Before & After









## San Antonio's Health Partnerships

- The San Antonio Housing Authority and their People Lead developed a unique partnership with the University of the Incarnate Word Ila Faye Miller School of Nursing and Health Professionals
- Through the partnership with UIW, faculty and nursing students visit the former public housing residents at home
- Health professionals provide health assessments and connect residents to health services, including home-visit exams, pharmacy services, diabetes education, and behavioral counseling





Greetings from

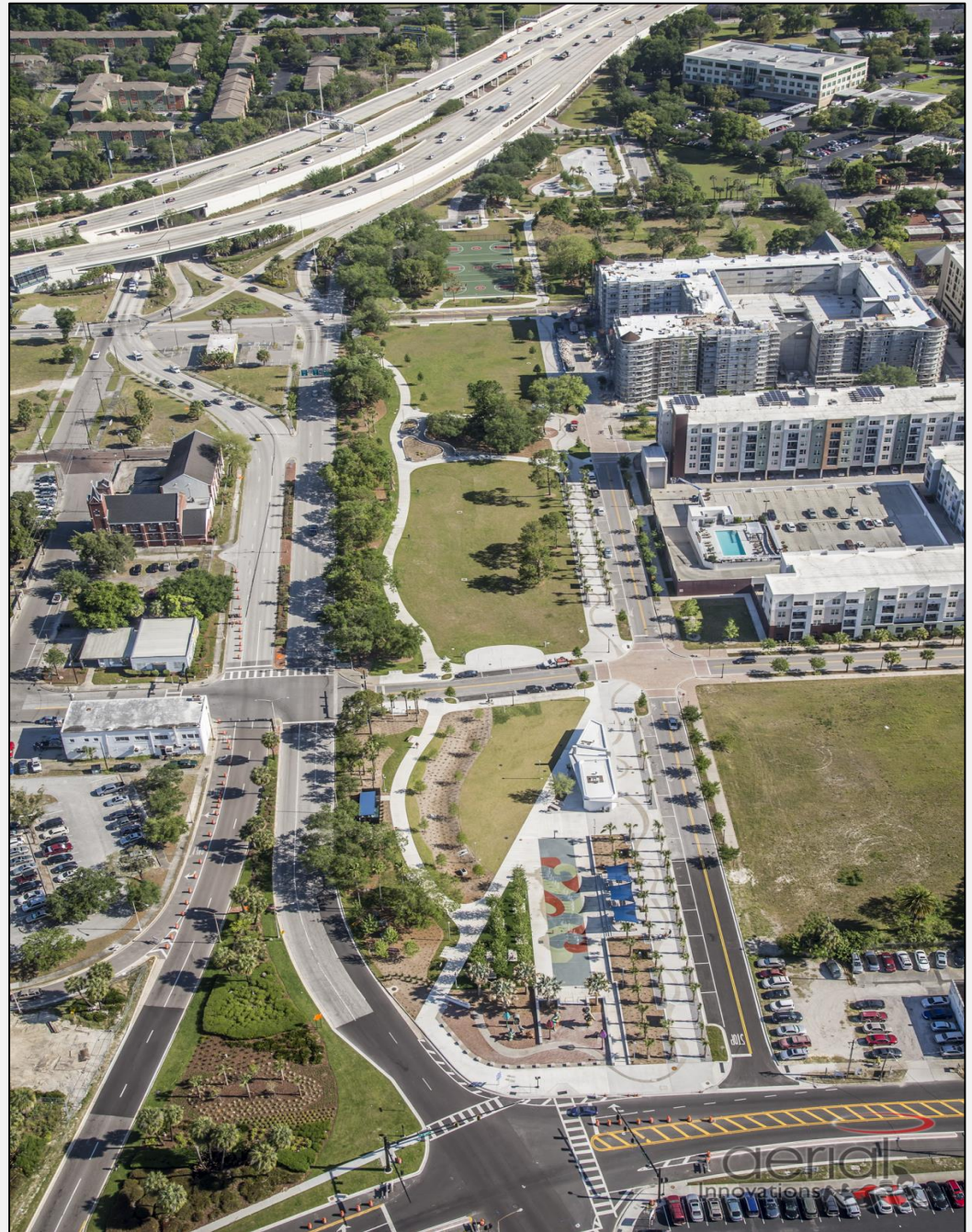


FLORIDA



## Tampa's Ybor Neighborhood

- Large scale 30-acre redevelopment of the former Central Park Village
- Development includes mixed-income, mixed-use housing, homeownership, and senior buildings
- CCI funding used for a large park system that runs along the western edge of the new housing development





## Housing Investments in Ybor





# CCI Funding Supports the New Perry Harvey Sr. Park to Complement Housing & Celebrate Neighborhood's African American Cultural History





# GREETINGS

*from*



# OHIO





## Transforming Poindexter Village – Before & After





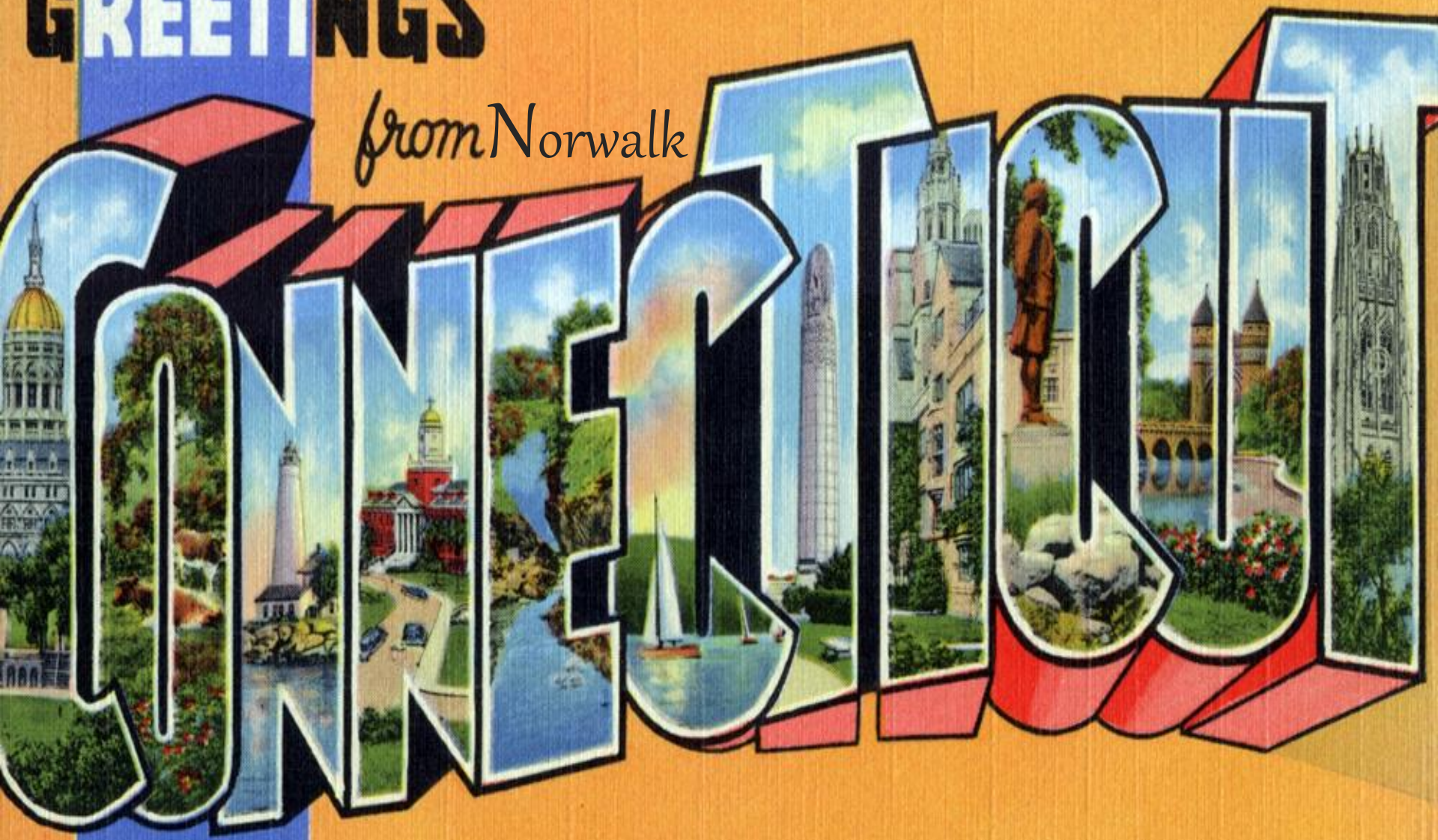
## Poindexter Place – Housing Opportunities for Senior Citizens





**GREETINGS**

*from Norwalk*





# Coming 2018: New Housing Replaces Washington Village





# CCI Funding Supports Affordable Housing Rehabilitation Program & Park Improvements Surrounding Replacement Housing





**Greetings  
from**



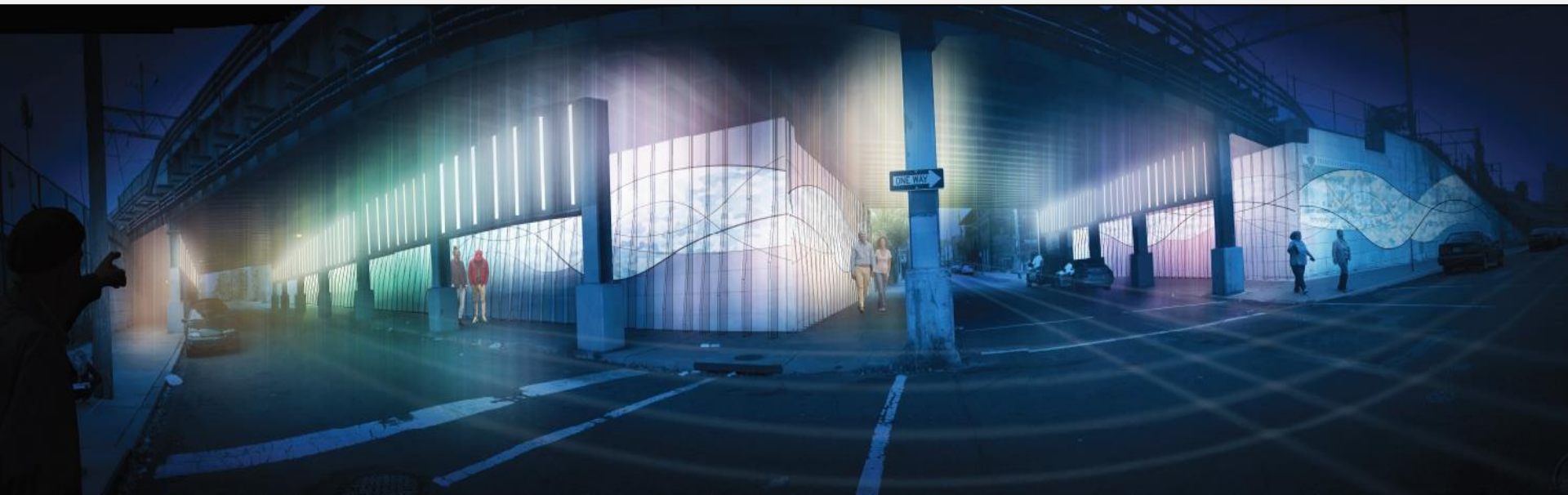


## Housing and Neighborhood Plans Make Blocks Whole through Scattered Site Infill and Vacant Lot “Cleaning and Greening”





## CCI Funding to Support Placemaking and Safety Improvements to Viaduct





## Philadelphia's Education Partnerships

- The Norris Community After School Program was created as a partnership between Temple University and the Norris Apartments Resident Council
- The program provides high quality educational services to 45 children, employment opportunities for 8 public housing residents, as well as undergraduate field experience for university students
- The afterschool program is directed and staffed by Norris residents who are being mentored in business development, management and academic enhancement by the Temple University College of Education





Greetings From



PENNA.



## Targeting a Public Housing Site and a HUD-assisted Multifamily Site for Neighborhood Revitalization





# Transformation in the Larimer and East Liberty Neighborhoods – Before & After









