



CNA e-Tool Assessment Tool 1.2 v6 Changes

U.S. Department of Housing and Urban Development (HUD)

Federal Housing Administration (FHA)

April 2018



Table of Contents

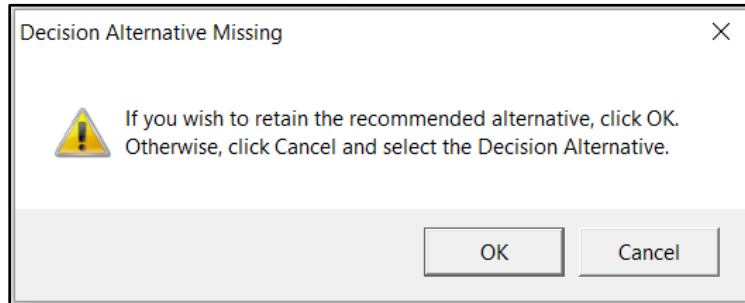
1.	Assessor Tool.....	2
1.1	Repair Replace Decision Form Changes.....	2
1.2	General Text Restrictions.....	3
1.3	Unit Overwrite Bug.....	5

1. Assessor Tool

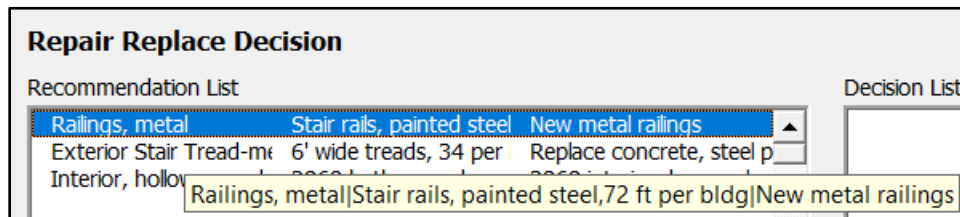
1.1 Repair Replace Decision Form Changes

- When updating a Repair Replace Decision, the field “Cost” no longer automatically changes to \$0.00
- After a decision is added, the field, “Alternative Recommendation” no longer changes to the newly selected Decision Alternative.

If the user adds a Decision without first selecting from the “Decision Alternative” field, a pop-up will display confirming that the user would like to retain the recommended alternative. Selecting cancel will not add the decision.



- If the user highlights a recommendation from the Recommendation List, a yellow box now displays the full details. The user may need to move the cursor out of the field and back to trigger the yellow box display.



- The following fields are now read-only: Life Safety Indicator; Accessibility Indicator; Accessibility Statue; Scope of Accessibility Compliance.



Life Safety Indicator

Accessibility Indicator

Accessibility Statute

Scope of Accessibility Compliance

Scope of Required Replacement/ Refurbishment

Comments

1.2 General Text Restrictions

- Various fields throughout the Assessor Tool used to allow alpha numeric keys despite the logic of the field.
- The assessor tool now restricts these fields as follows:

Form	Field	Restriction
Property	Seismic - SXS	Numeric
	Seismic – SX1	Numeric
	# Vacant Units	Numeric
	Minimum Sample %	Numeric
	Date of Site Visit	Date
Sites	Total Site Square Feet	Numeric
	Improved Vehicular Surface Area	Numeric
	Surface Non-Accessible Spaces	Numeric
	Surface Accessible Spaces	Numeric
	Covered Surface Non-Accessible Spaces	Numeric
	Covered Surface Accessible Spaces	Numeric
Unit Type Definition	Bedrooms	Numeric
	Bathrooms	Numeric
	Shower Heads	Numeric
	Faucets/Hookups	Numeric



	Toilets	Numeric
	Square Feet	Numeric
Buildings	Year Built	Numeric
	Occupancy Permit Date	Date
	Building Permit Date	Date
	Year of Rehab	Numeric
	Number of Stories above Grade	Numeric
	Number of Stories Below	Numeric
	Number of Elevators	Numeric
	Replacement Cost of Building per SF	Numeric
Units and Common Spaces	Number of Units	Numeric
	Total Mobility Impaired Units	Numeric
	Total Sensory Impaired Units	Numeric
	In-Unit Non-Accessible Parking Spaces	Numeric
	In-Unit Accessible Parking Spaces	Numeric
	Square Footage	Numeric
	Number of Faucets/Hookups	Numeric
	Number of Toilets	Numeric
	Number of Showerheads	Numeric
	Non-Accessible Common Garage	Numeric
	Accessible Common Garage Spaces	Numeric
Utility Type Usage	Utility Rate per Unit	Numeric
	As of Date	Date
Components	Unit Cost	Numeric
	Quantity	Numeric
	Usage / Year	Numeric
	Year Installed	Numeric
	Assessed Remaining Useful Life	Numeric
Alternatives	Unit Cost	Numeric
	EUL	Numeric
Repair Replace Recommendation	Duration	Numeric
Financial Factors	Estimate Period (# yrs)	Numeric



	Initial Deposit to RfR	Numeric
	YR-1 Annual deposit Per Unit	Numeric
Repair Replace Decision	Duration	Numeric

1.3 Unit Overwrite Bug

- Fixed inconsistent behavior of the Update Button on the Unit Types Form, which caused unsolicited updates to happen when switching to another form.

Unit Type Definition

- 1BR1ba
- 2BR2ba A
- 2BR2ba B Share suites
- 3BR2ba

Unit Type ID

Bedrooms Faucets/Hookups

Bathrooms Toilets

Shower Heads Square Feet