

# FY 2018 FHA Multifamily Production and Historical data

Firm Commitments, Issued and Reissued, and  
Initial Endorsements

Data from DAP, October 22, 2018

# FHA Multifamily Production FY 2018 vs. FY 2017 Initial Endorsements

Fiscal Year 2017

Program Category	Mortgage Amount - Initial Endorsements,		# of Projects	Units or Beds
	First: 10/04/2016 - Last: 09/29/2017			
FHA NC/SR Apts	\$4,403,052,554		199	33,803
223f Refi/Purchase Apts	\$7,292,902,650		574	93,769
223a7 Refi Apts	\$2,552,642,000		183	32,122
241a Impvmts Apts	\$49,764,600		5	743
Other FHA	\$1,163,400		1	62
HFA Risk Sharing	\$936,660,929		93	9,826
QPE Risk Sharing	\$4,400,000		1	57
<b>Total FHA Apt. Programs</b>	<b>\$15,240,586,133</b>		<b>1,056</b>	<b>170,382</b>
<b>Total Risk Share</b>	<b>\$941,060,929</b>		<b>94</b>	<b>9,883</b>
With LIHTC ( <i>No Risk Share</i> )	\$2,789,243,800		276	
Without LIHTC ( <i>No Risk Share</i> )	\$11,510,281,404		686	
<b>Total</b>	<b>\$14,299,525,204</b>		<b>962</b>	

Fiscal Year 2018

Program Category	Mortgage Amount - Initial Endorsements,		# of Projects	Units or Beds
	First: 10/02/2017 - Last: 09/28/2018			
FHA NC/SR Apts	\$6,299,180,229		263	47,850
223f Refi/Purchase Apts	\$7,270,609,800		506	81,843
223a7 Refi Apts	\$805,552,000		64	9,732
241a Impvmts Apts	\$49,404,600		6	573
Other FHA	\$0		-	-
HFA Risk Sharing	\$789,956,512		69	8,448
QPE Risk Sharing	\$0		-	-
<b>Total FHA Apt. Programs</b>	<b>\$15,214,703,141</b>		<b>908</b>	<b>148,446</b>
<b>Total Risk Share</b>	<b>\$789,956,512</b>		<b>69</b>	<b>8,448</b>
With LIHTC ( <i>No Risk Share</i> )	\$3,248,816,500		264	
Without LIHTC ( <i>No Risk Share</i> )	\$11,175,930,129		575	
<b>Total</b>	<b>\$14,424,746,629</b>		<b>839</b>	

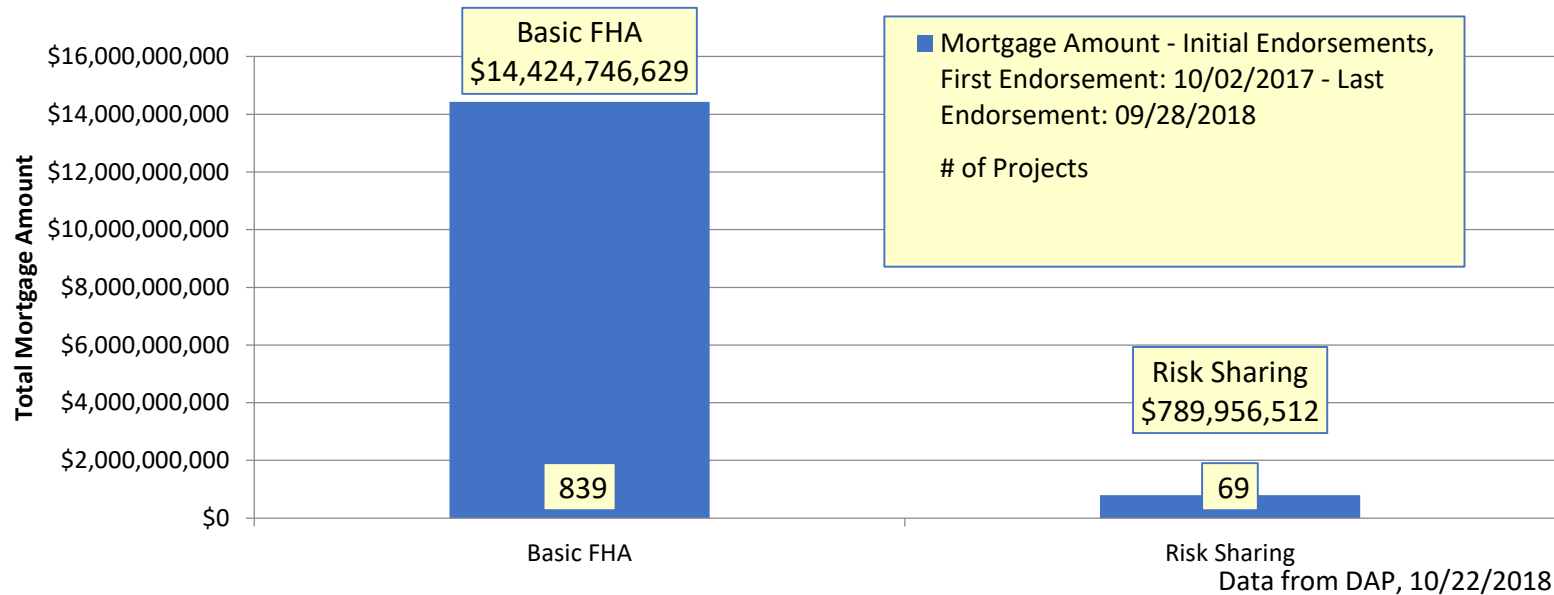
FY 2018 vs. FY 2017, Mortgage Vol. by Program

Program Category	Volume Change 2018 vs. 2017
FHA NC/SR Apts	43.1%
223f Refi/Purchase Apts	-0.3%
223a7 Refi Apts	-68.4%
241a Impvmts Apts	-0.7%
Other FHA	-100.0%
HFA Risk Sharing	-15.7%
QPE Risk Sharing	-100.0%
<b>Total FHA Apt. Programs</b>	<b>-0.2%</b>
<b>Total Risk Share</b>	<b>-16.1%</b>
With LIHTC ( <i>No Risk Share</i> )	16.5%
Without LIHTC ( <i>No Risk Share</i> )	-2.9%
<b>Total</b>	<b>0.9%</b>

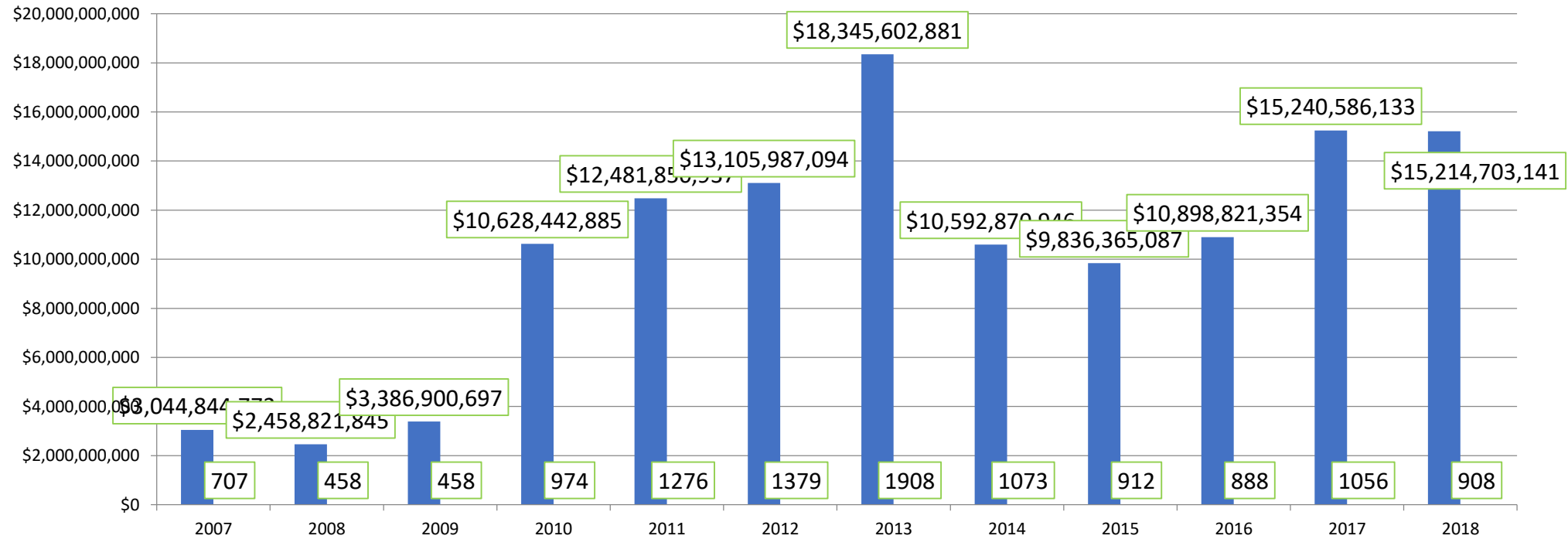
Data from DAP, 10/22/2018

Program Category	Mortgage Amount - Initial Endorsements, First Endorsement: 10/02/2017 - Last Endorsement: 09/28/2018		
	Mortgage Amount	# of Projects	Units
Basic FHA	\$14,424,746,629	839	139,998
Risk Sharing	\$789,956,512	69	8,448
<b>Grand Total</b>	<b>\$15,214,703,141</b>	<b>908</b>	<b>148,446</b>

**Initial Endorsements - 2018 Basic FHA and Risk Share**

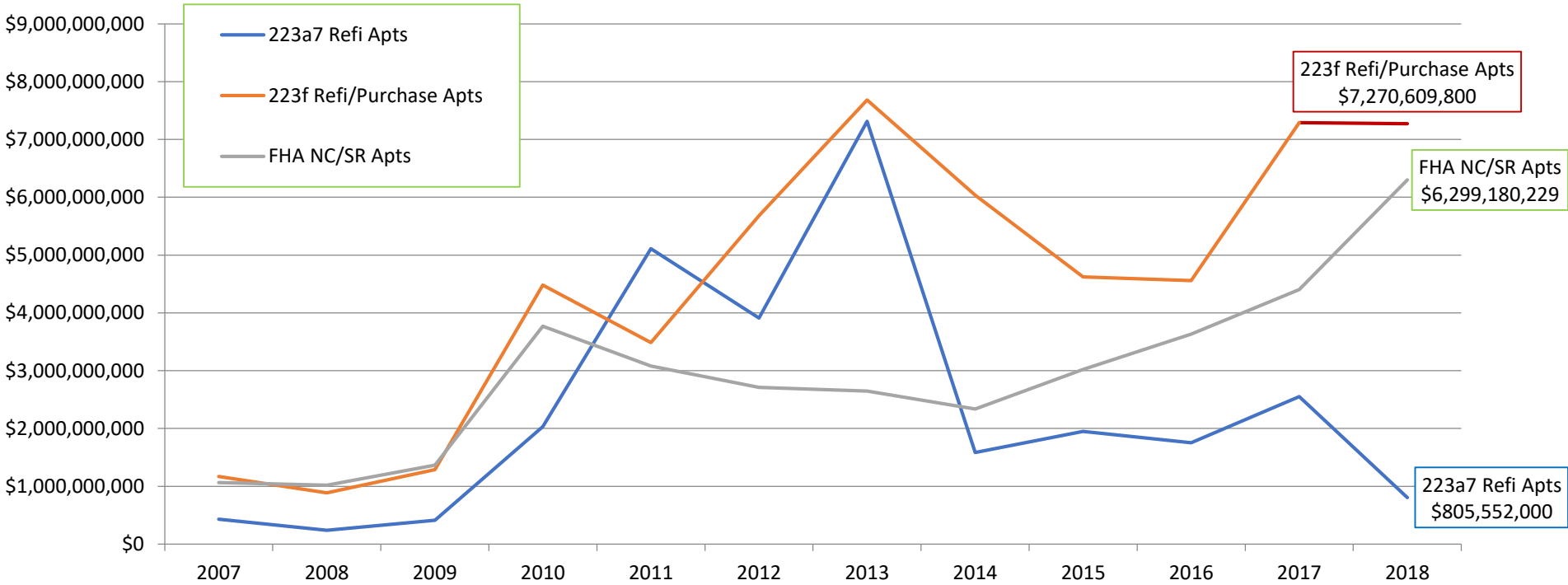


**FHA Multifamily - Initial Endorsements, All Apartment Programs  
 NC/SR, 223(f), A(7), 241a, Other FHA, HFA Risk Share & QPE Risk Share  
 (Excludes Health Care)**



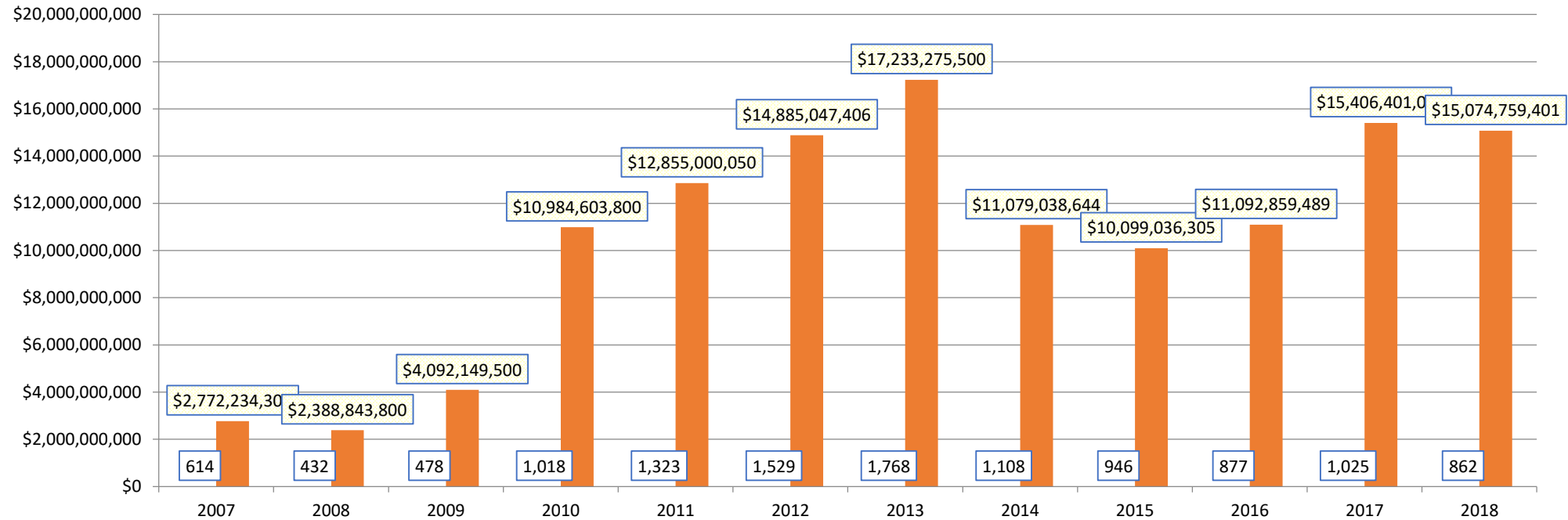
Data from DAP, 10/22/2018

# FHA Multifamily - Initial Endorsements Basic Apartment Programs NC/SR, 223(f), A(7)



Data from DAP, 10/22/2018

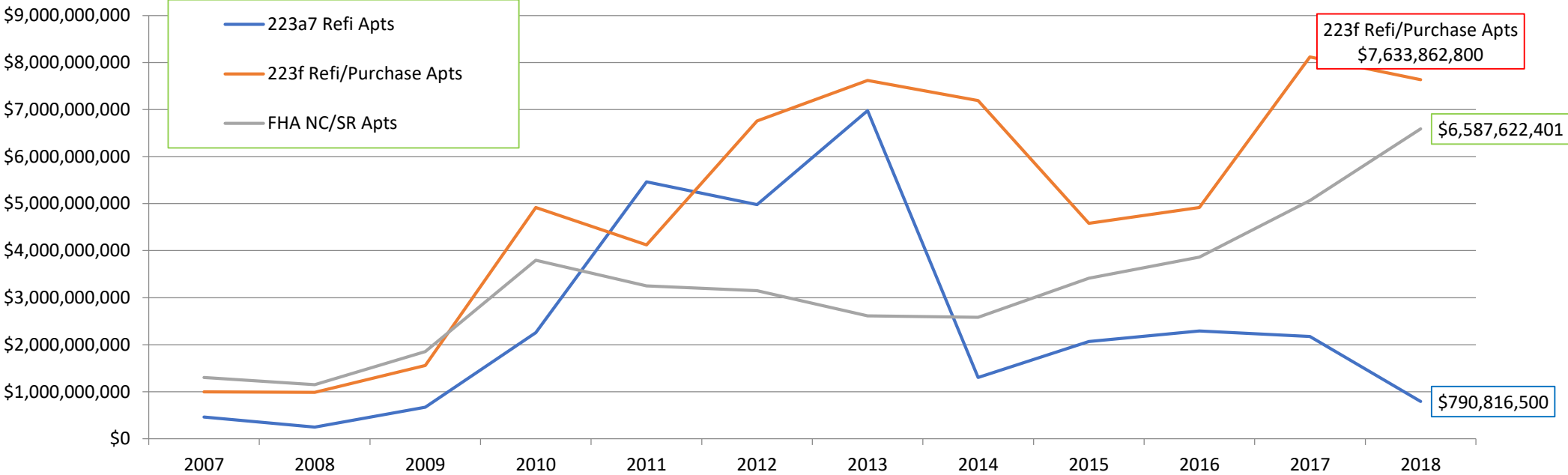
**FHA Multifamily - Firm Commitments, All programs  
including Health Care and Apartments  
NC/SR, 223(f), A(7), 241a, Other FHA, HFA Risk Share & QPE Risk Share**



Data from DAP, 10/22/2018

*Note: Firm Commitments data presented here include Firm Commitments Issued and Reissued in the FY indicated. Historically, Reissued Firm Commitments account for less than 2% of Basic FHA Program Firm Commitment volume. Reissuances are included as a measure of Production volume because the Commitment qualifies as a new commitment for legal and other purposes.*

## FHA Multifamily - Firm Commitments Basic Apartment Programs NC/SR, 223(f), A(7), 241a, & Other FHA

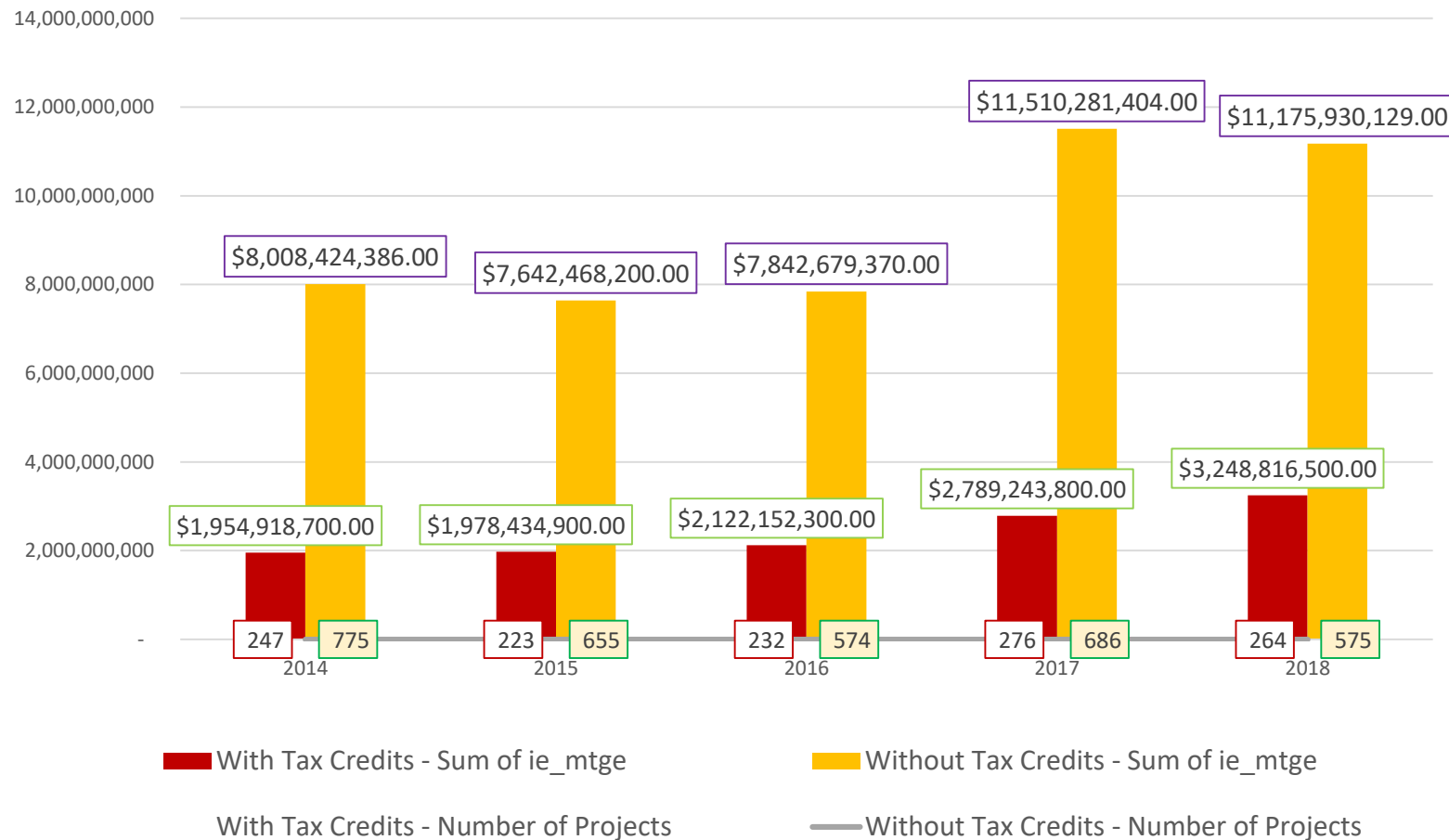


Data from DAP, 10/22/2018

*Note: Firm Commitments data presented here include Firm Commitments Issued and Reissued in the FY indicated. Historically, Reissued Firm Commitments account for less than 2% of Basic FHA Program Firm Commitment volume. Reissuances are included as a measure of Production volume because the Commitment qualifies as a new commitment for legal and other purposes.*

# Volume of FHA Initial Endorsements on Projects With LIHTC and Without LIHTC Projects

*Includes All Basic FHA Programs and Excludes Risk Share*



Data from DAP, 10/22/2018



## Risk Share Programs - Initial Endorsements Volume of Mortgages and Project Count (Includes both HFA and QPE programs)

