



**YHDP NEW
PROJECTS!**

New Project List

HUD Coordinated Community Plan (CCP) Threshold Requirement – New Project Types

A list of project types that will be funded by HUD and other sources that will support the implementation of the CCP.



The new project list must include the following:

- Summary of project structure, purpose, and supportive services offered
- Special YHDP activities that will be integrated in project design
- Estimate of the number of housing units created with YHDP funding;
- Estimated number of youth served;
- Estimated number of staff hired/staffing ratios;
- Geographic area covered by the proposed projects;
- Projected total project cost
- Estimated budget, broken down by budget line item

At this part of the planning phase, the community is documenting which overall project types will meet the needs of gaps in the youth homeless response system. It is not expected that you will be able to include the specific projects that agencies will operate after you complete the procurement process (e.g., Rapid Rehousing has been identified as a project type, but who will administer the RRH project(s) has not yet been determined).

YHDP Project Basics

YHDP funding can serve at-risk or unaccompanied youth and pregnant and parenting youth who are:

- Under the age of 25
- Meet criteria of HUD's homelessness definition

Funded projects must be situated within the geography of the CoC.

Funding cannot be used to expand an existing project – must fund NEW project.



HUD Homeless Definitions

- Category 1: Literally Homeless
- Category 2: Imminent Risk of Homelessness
- Category 3: Homeless Under Other Federal Statutes (Must receive HUD approval to serve this category)
- Category 4: Fleeing/Attempting to Flee Domestic Violence

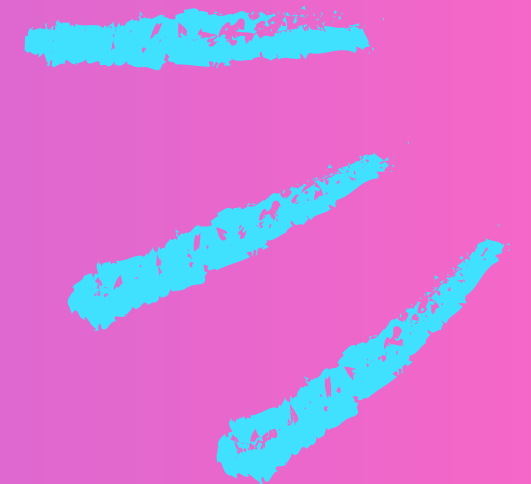


Category 1: Literally Homeless

Three circumstances must meet this definition:

- Sleeping in a place not designed for or ordinarily used as a regular sleeping accommodation (e.g. car, park bench, etc)
- Living in a shelter designated to provide temporary living arrangements
- Exiting an institution (e.g., jail, hospital) where they resided for 90 days or less and were residing in emergency shelter or place not meant for human habitation immediately before entering institution

***Note:** Youth residing in Transitional Housing qualify under Category 1



Category 2: Imminent Risk

- Individuals/families who will imminently lose their primary nighttime residence within 14 days

AND

- Have no subsequent residence identified

AND

- The individual/family lacks the resources or support networks needed to obtain permanent housing



Category 4: Living in Unsafe Situations, Fleeing or Attempting to Flee Domestic Violence

- Individuals and families that have an unsafe nighttime residence (e.g. fleeing or attempting to flee domestic violence, dating violence, sexual assault, stalking, or other dangerous or life-threatening conditions related to violence)

AND

- Have no subsequent residence identified

AND

- The individual/family lacks the resources or support networks needed to obtain permanent housing



YHDP Project Types

HUD will fund the following project types:

- **Rapid Rehousing (RRH)**
- **Joint Transitional Housing/Rapid Rehousing**
- **Permanent Supportive Housing (PSH)**
- **Supportive Services Only (SSO)**
- **Transitional Housing (TH)**
- **HMIS**

| | | | |
|---|---|---|---|
| | | | |
| — | | | ✓ |
| — | | ✓ | |
| — | | ✓ | |
| — | ✓ | | |

Remember!

50% of your community's TOTAL YHDP award must go towards housing, not counting planning grants.

“Housing” is determined as the percentage of Rental Assistance, Leasing, and Operating budget line items, as compared to the total award.

HUD will ask for communities to submit an analysis of the balance of services and housing in their CCP.



Rapid Rehousing (RRH)

- RRH rapidly connects families and individuals experiencing homelessness to permanent housing through a tailored package of assistance - includes time-limited housing assistance (24-36 months) and targeted supportive services.
- Helps solve practical and immediate challenges to obtaining permanent housing while reducing the amount of time experiencing homelessness.
- Participants determine when they want to be housed, choose the services they want, and have choices in the type and location of housing they enter whenever possible



RRH Project Spotlight: *RRH Plus, Austin TX*

Goal: To rapidly exit high needs youth from the street to permanent housing that is paired with intensive case management and supportive services.

Services: Community-based program providing housing location services, rental assistance and other supports, including shared housing when appropriate, matching youth with chosen roommates to alleviate housing costs.

Key Features: Using progressive engagement, can provide longer housing assistance (up to 36 months) when needed. Additionally, can provide longer case management when needed. Extensions of housing assistance and case management were granted by HUD via waiver.

Transitional Housing

- Project designed to provide housing and appropriate supportive services to persons experiencing homelessness to facilitate movement to independent living.
- Housing is short-term, typically less than 24 months.
- In addition to providing safe housing, other services are available to help participants become self-sufficient.
- The lease is between the provider and the landlord; and there's an occupancy agreement between the provider and the participant.



Joint TH/RRH

- This project type combines both Transitional Housing (TH) and Rapid Rehousing (RRH).
- Maximum period of assistance is 24 months for TH and 24 months for RRH (unless special activity approval for RRH 36 months)
- A youth has a choice of which program they wish to access, and both TH and RRH portions must be available. They can go to TH first and then RRH, or straight to RRH.
- Many youth who have no rental history and/or multiple barriers find the support provided with TH an easier launching pad into permanent housing.
- TH examples: A Low-Income Tax Credit Property (site-based); Renting a home (scattered site).



TH-RRH Project Spotlight: *BVCA - Nebraska BoS*

Goal: Blue Valley Community Action Agency (BVCA) was one of four TH-RRH funded agencies in NB tasked with rapidly housing youth in rural areas.

Services: Youth are connected with job-training programs, intensive case management, crisis/long-term counseling and life skills training.

Key Features: Given the rural area and lack of TH and shelter beds, the CoC use an available YHDP Special Activity to house youth in hotel/motels for the TH portion of the TH-RRH program.



Permanent Supportive Housing (PSH)

- Permanent Supportive Housing (PSH) is a permanent housing project in which housing assistance (e.g., long-term leasing or rental assistance) and supportive services are provided to assist households, **with at least one member with a disability**, in achieving housing stability.
- **There is no chronic homelessness requirement** as there may be for other CoC-funded PSH projects.
- PSH is the preferred intervention for those with **chronic** physical and/or behavioral health conditions.
- Housing assistance is long-term- there is no end date.



PSH Project Spotlight: *YAC Collaborative - San Francisco*

Goal: To provide youth with criminal records who may have barriers to securing housing. The program targets youth with felonies exiting from Young Adult Court (YAC) program.

Services: Provides housing, support and programming as an alternative to sentencing. Long-term stable housing and case management allows youth to complete post-secondary school and obtain living wage jobs.

Key Features: Partnership with District Attorney, Public Defender, Collaborative Courts and Larkin Street Youth Services.

Supportive Services Only (SSO)

SSOs are a project type where YHDP funds only pay for services, not housing assistance. Examples are:

- **Host Homes**
- **Outreach services**
- **Diversion/Housing Problem Solving services**
- **System Navigators**
- **Community-wide or specific partnerships between services**

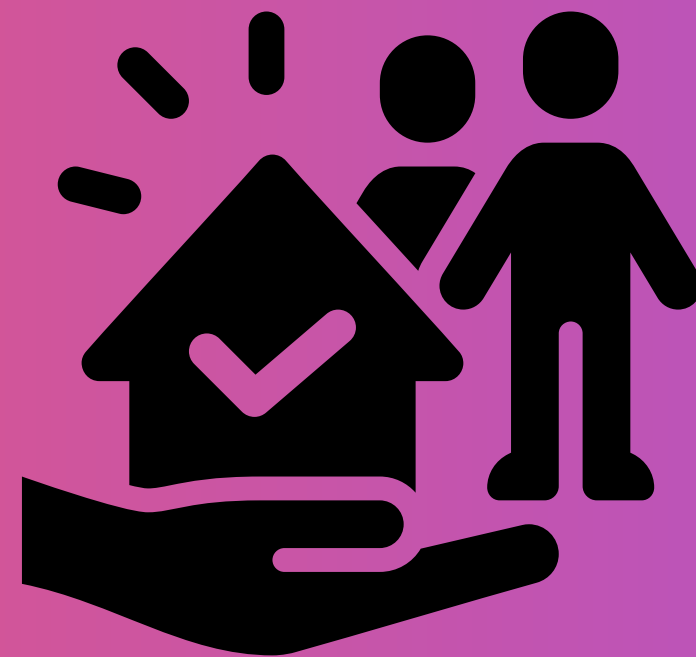
SSO projects can also be used to improve or increase the capacity of a community's Youth Coordinated Entry System.



SSO- Coordinated Entry Projects

Coordinated entry processes are necessary components of a high functioning crisis response system and must be developed intentionally to incorporate youth.

SSO grants specifically for coordinated entry process may only be used to implement the youth specific component of a community's coordinated entry process.



SSO Project Spotlight: System Navigation - SE Kentucky

Goal: To provide a youth with an advocate that understands the system and can help the youth navigate and obtain the supportive services to meet their unique needs.

Services: Hired multiple system navigators to: a) directly connect with youth through outreach; b) work with partners to identify youth experiencing or at-risk of homelessness; c) connect youth with appropriate interventions(including Coordinated Entry); and d) develop and cultivate relationships across sectors.

Key Features: Two system navigators were hired (one for each “area development district”) as well as peer mentor specialists that are embedded in drop-in centers.

SSO Project Spotlight: Host Homes- Central Florida

Goal: Host homes will serve as a short term, alternative housing option for YYA between the ages of 15-24 who are: Unaccompanied, Unwilling or unable to access traditional shelters, In need a “cooling off” period with their family of origin in order to safely reunite with family, and/or Enrolled in post-secondary education and need somewhere to stay during extended breaks.

Services: All YYA participating in the host home project will be provided with a YYA system navigator to assist with managing external resources, determining next steps, and ensuring a successful transition.

Key Features: Received special activities approval for up to \$1,000 per month for families that provide housing under a host home and kinship care model and provide moving expenses more than one time to a program participant

Homeless Management Information System (HMIS)

HMIS grants may only be used for recipient costs of implementing or expanding youth specific HMIS system components (e.g., adding youth-specific data standards, evaluating this program, or to develop YHDP specific reports) or to add youth organizations to the HMIS.

HMIS projects must meet the 4 criteria below if awarded YHDP funds, but will pass threshold if they receive at least 3 out of the 4 points available for the following criteria:

- a. The HMIS funds will be expended in a way that furthers the CoC's implementation concerning youth;
- b. The HMIS collects all Universal Data Elements as set forth in the HMIS Data Standards;
- c. The HMIS un-duplicates client records; and
- d. The HMIS produces all HUD required reports, and provides data as needed for HUD reporting (e.g., APR, quarterly reports, data for CAPER/ESG reporting) and HHS/RHY reporting as applicable.

HMIS Project Spotlight: *Lane County, Oregon*

Goal: To expand HMIS capacity.

Services: Incorporate new YHDP programs into HMIS; provide data-related training & technical assistance to YHDP providers; Continuous quality improvement activities including ongoing HMIS data quality engagement with YHDP providers, ensuring complete and correct data entry; Completion of HUD and other funder required reports (i.e. APR, Quarterly Reports, community dashboards); Ongoing tracking of project outcomes identified in the CCP

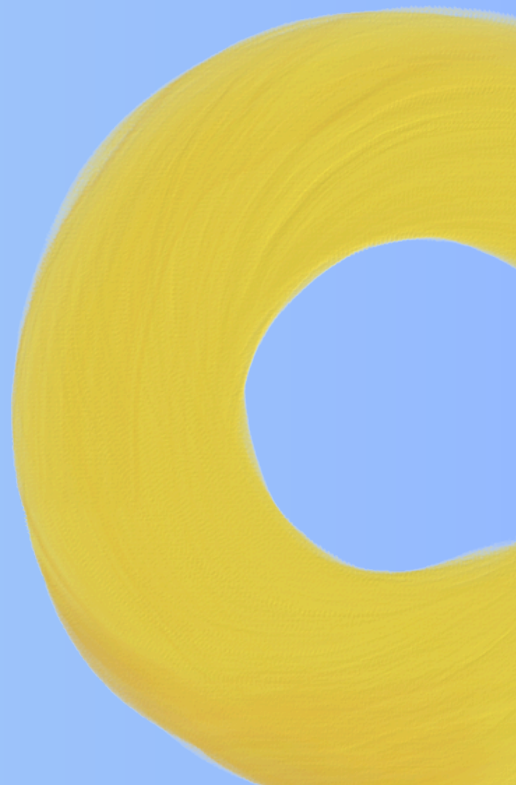
Desired outcomes: Increased capacity on data management team to meet the data tracking needs of new YHDP projects; improvements in data completeness and data quality; increased and improved participation in HMIS.

Eligible Costs: Supportive Services

In general, grant funds may be used only on those services listed in the CoC Program interim rule:

- Assessing service needs
- Moving costs
- Case management
- Child care
- Education services
- Employment assistance & job training
- Food
- Housing search & counseling services

- Legal services
- Life skills training
- Mental health services
- Outpatient health services
- Outreach services
- Substance abuse treatment services
- Transportation
- Utility deposits



Eligible Costs: Transitional Housing (stand alone TH project)

TH budget line items include leasing, rental assistance, supportive services, operating costs, HMIS and project administration. Note that rental assistance and leasing/operating cannot be used in the same building.

Eligible Leasing Costs:

- Leasing Costs for individual units or structures
- Security deposit (Up to two month's rent)
- First and last month's rent of an individual unit
- Staff and overhead costs directly related to carrying out leasing activities (e.g., HQS inspections, writing rent checks)
- Utilities

Eligible Operating Costs:

- Maintenance and repair of housing
- Building security
- Electricity, gas & water
- Furniture (Intended for the operation of the housing; therefore, the furniture in projects must be retained for use in the project and cannot be kept by the program participant upon exiting the project)
- Equipment



Eligible Supportive services:

- Case management
- Counseling
- Child-care
- Education services
- Employment assistance and job training
- Housing search and counseling
- Legal services
- Life skills training
- Mental health services
- Outpatient health services
- Outreach services
- Substance use treatment services
- Transportation
- Utility deposits

Eligible Rental Assistance Costs:

- Rental Assistance for up to 24 months (or 36 with special activity)
- Supportive services
- Processing rental payments to landlords
- Examining participant income
- Inspecting units



Eligible Administration Costs:

- General management, oversight and coordination
- Training on CoC requirements
- Environmental review

Eligible Costs: Rapid Rehousing (stand alone RRH project)

RRH budget line items typically include rental assistance, supportive services, HMIS and project administration. There is a Special Activity that allows RRH projects to also use leasing, sponsor-based and project-based rental assistance.



Eligible Leasing Costs:

- Leasing Costs for individual units or structures
- Security deposit (Up to two month's rent)
- First and last month's rent of an individual unit
- Staff and overhead costs directly related to carrying out leasing activities (e.g., HQS inspections, writing rent checks)
- Utilities

Eligible Administration Costs:

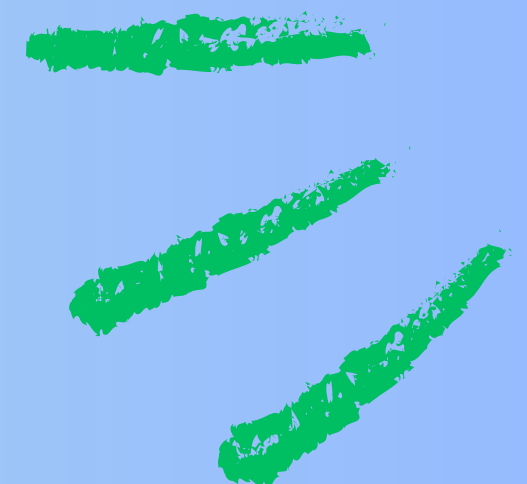
- General management, oversight and coordination
- Training on CoC requirements
- Environmental review

Eligible Supportive services:

- Case management
- Counseling
- Child-care
- Education services
- Employment assistance and job training
- Housing search and counseling
- Legal services
- Life skills training
- Mental health services
- Outpatient health services
- Outreach services
- Substance use treatment services
- Transportation
- Utility deposits

Eligible Rental Assistance Costs:

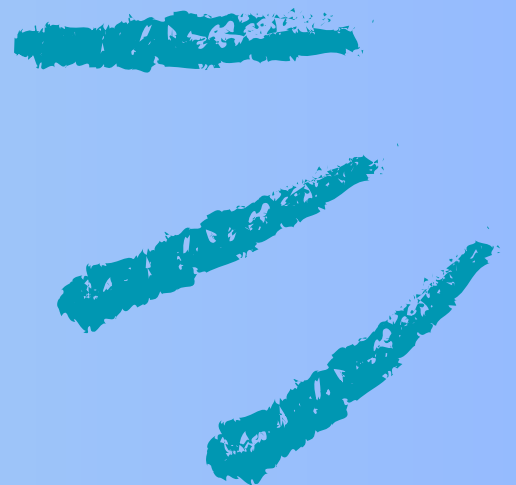
- Rental Assistance for up to 24 months (or 36 with special activity)
- Supportive services
- Processing rental payments to landlords
- Examining participant income
- Inspecting units



Eligible Costs: Joint TH/RRH

In Joint TH/RRH you can ONLY use leasing funds for the TH portion (you cannot use rental assistance for the TH portion). Note that rental assistance and leasing/operating cannot be used in the same building.

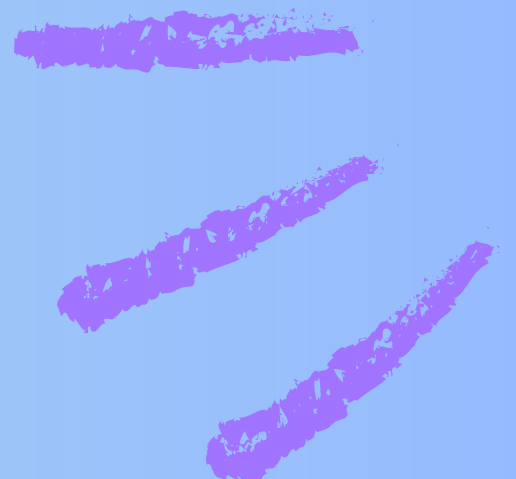
All other eligible costs reviewed on the previous TH and RRH slides are allowable.



Eligible Costs: Permanent Supportive Housing

PSH budget line items include leasing, rental assistance, supportive services, operating costs, HMIS and project administration.

All other eligible costs reviewed on the previous TH and RRH slides are allowable under the PSH line items.



Eligible Costs: Project Administration

Project administration funds can be used to conduct:

- General management, oversight and coordination
- Training on CoC requirements

Costs of carrying out other eligible activities should be charged to those budget line items, NOT project administration.



YHDP Special Activities

YHDP projects may choose to take advantage of the special YHDP activities and other options listed in the Notice of Funding Availability (NOFO). The options would not meet CoC program requirements typically, but may be used to carry out YHDP projects and either require notification or approval from the Dept. of Housing and Urban Development Deputy Assistant Secretary.

[Click here for an overview of project types and a full list flexibilities!](#)



Applicant Requirements

Refer to the FY2023 YHDP NOFO for specific details on applicant requirements.

Applicant requirements:

- Be a City, State, County or special district government entity, Nonprofit Organization, Indian Tribe or tribally designated housing entity
- Have an active Unique Entity Identifier (UEI) number and be registered with SAM and grants.gov. This process can take up to approximately 4 weeks so don't wait to get started!
- Agree to utilize HMIS and Coordinated Entry (CE), following the CoC policies on HMIS and CE
- Submit an application in e-snaps to HUD by 7/1/25 if selected for funding

Questions

