

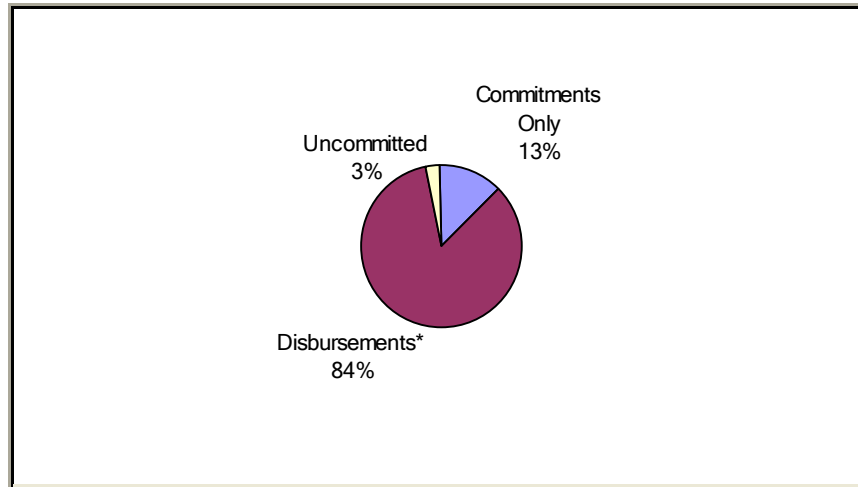


Participating Jurisdiction (PJ): **National City, CA**

PJ Since: **1992**

**(1) Status of Funds**

Total HOME Allocations Received: **\$11,502,390**



\* "Disbursements" include previously committed funds.

**(2) Unit Production - Completions**

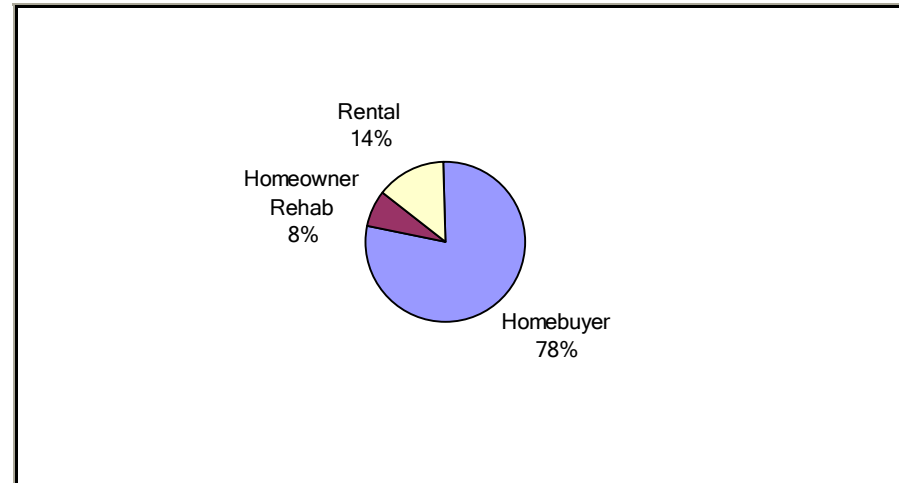
Last Quarter (July 1 - September 30, 2011):

Net Increase: **0**

Cumulative Since: 1992

Total: **194**

No net increase in reported units.

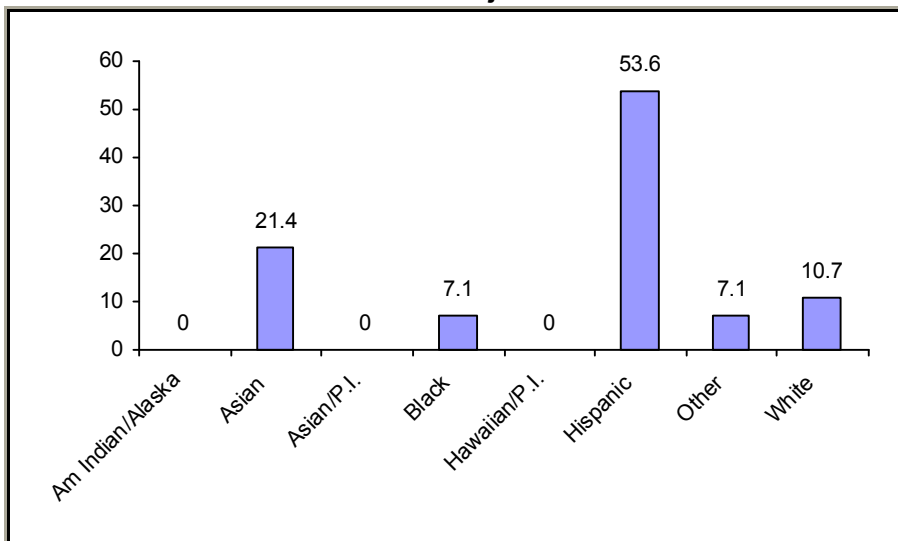


New Tenant-Based Rental Assistance (TBRA): **0 Households**

Tenant-Based Rental Assistance (TBRA) Total: **6 Households**

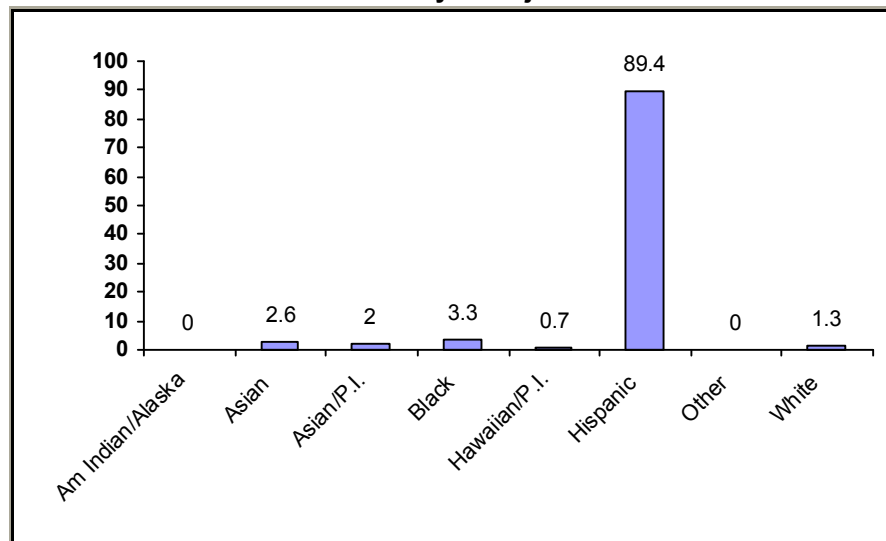
**(3) Production Detail  
Racial/Ethnic Breakout**

**Rental Projects**



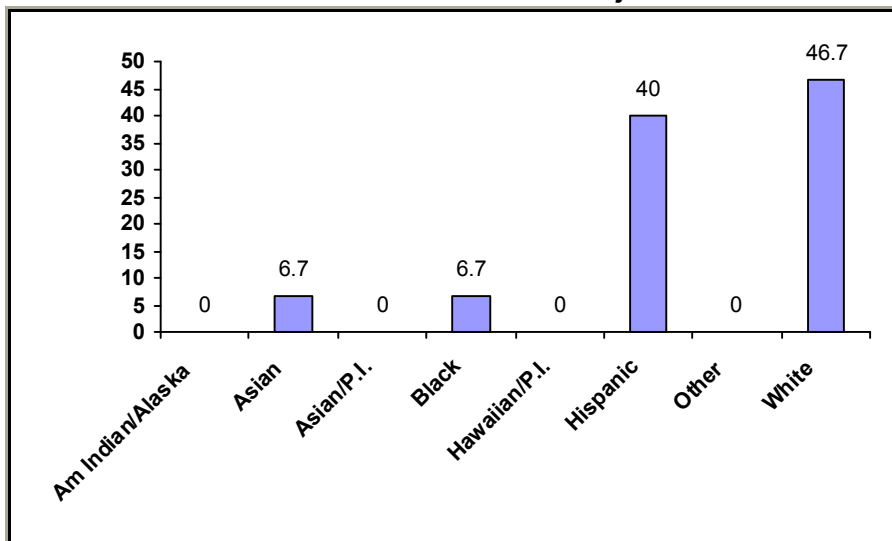
Avg. Total Dev. Cost (TDC)\* Per Unit: **\$79,090**

**Homebuyer Projects**



Avg. Total Dev. Cost (TDC)\* Per Unit: **\$80,460**

**Homeowner Rehabilitation Projects**



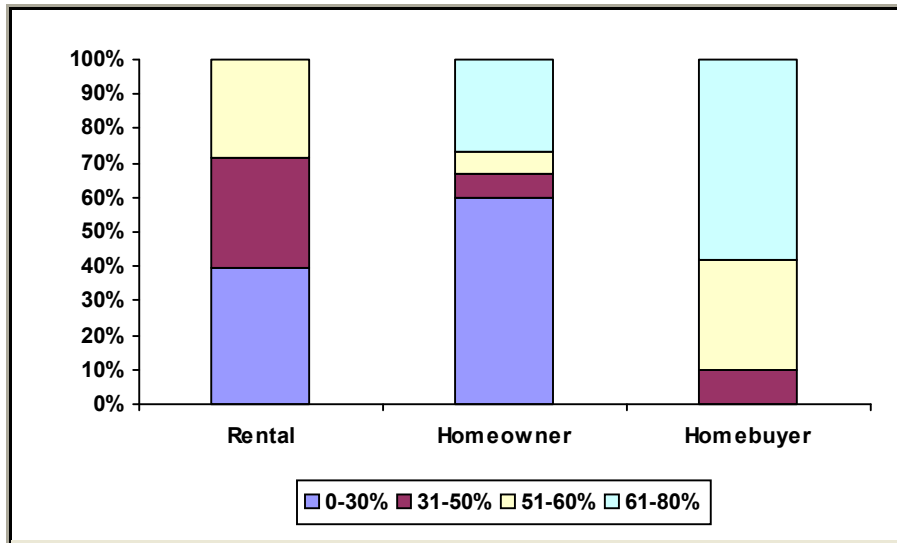
Avg. Total Dev. Cost (TDC)\* Per Unit: **\$12,333**

\* TDC - Includes all sources of funds

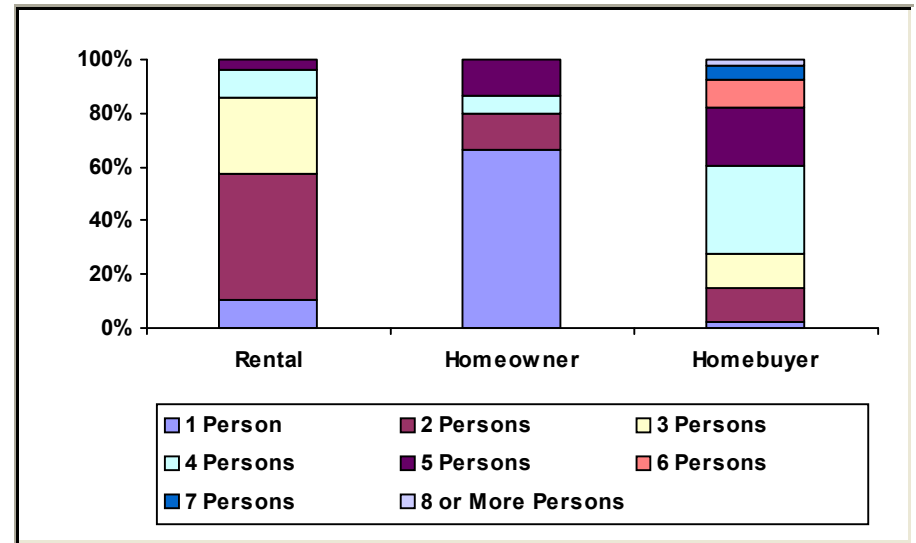
Source: Data entered by HOME Participating Jurisdictions into HUD's Integrated Disbursement and Information System (IDIS)



**b. Income Range Breakout**



**c. Family/Size Breakout**



**d. Household Type Breakout**

